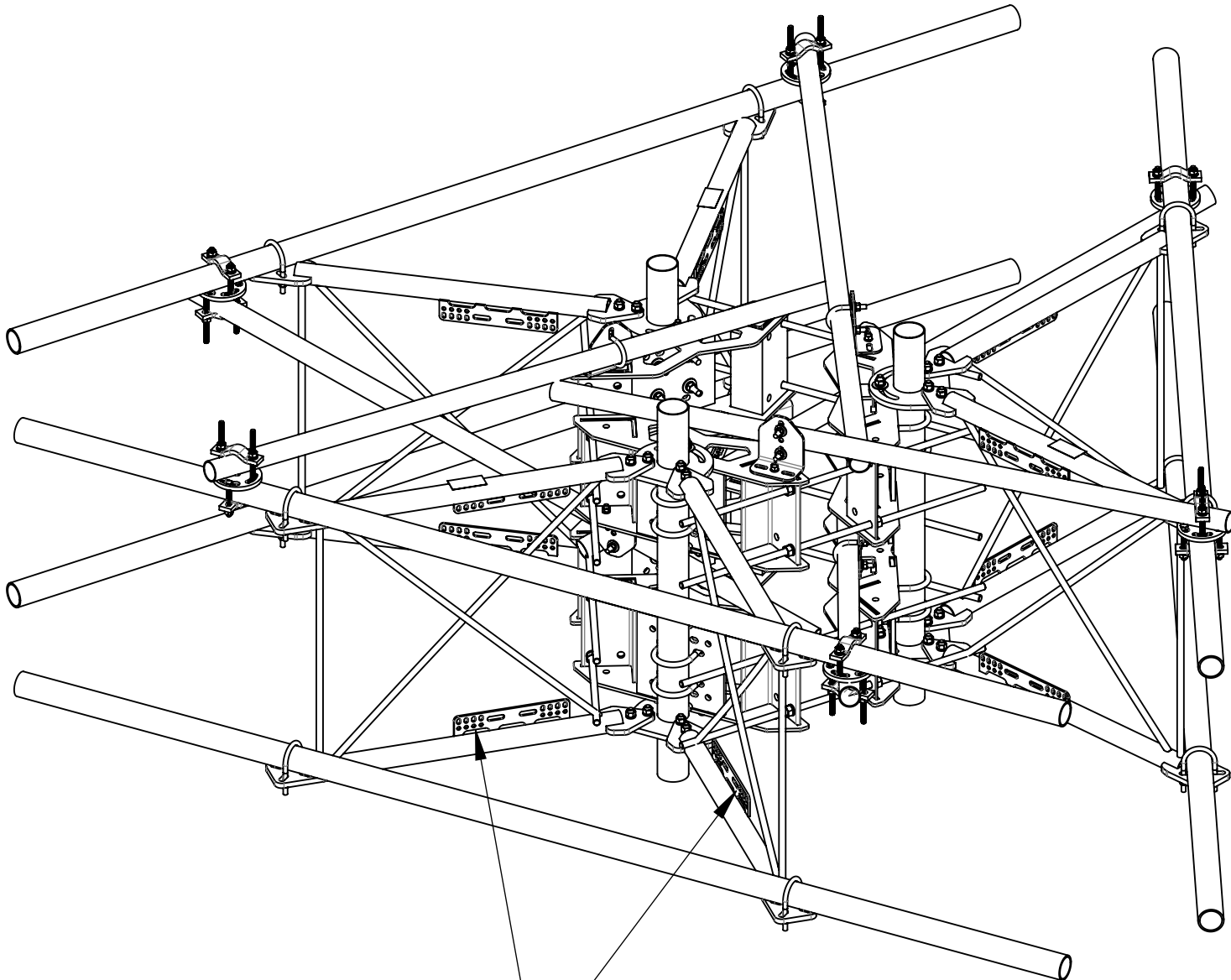

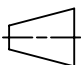


- 4
- 3
- 2
- 1
- 1.0 GENERAL NOTES
- 1.1 ALL METRIC DIMENSIONS ARE IN BRACKETS [X. X]
- 1.2 FOR PATENT INFO: <https://www.cs-pat.com>
- 2.0 DESIGN NOTES
- 2.1 ANY HAZARDS OR OBSTRUCTIONS TO THE CLIMBING FACILITY AND SAFETY CLIMB MUST BE IDENTIFIED PRIOR TO INSTALLING THE APPURTENANCE. ADDITIONAL PRODUCTS MAY BE REQUIRED TO MAINTAIN THE INTEGRITY OF THE SAFETY CLIMB. DURING INSTALLATION, TEMPORARY AND/OR PERMANENT PRECAUTIONARY MEASURES SHOULD BE TAKEN TO PRESERVE THE CLIMBING FACILITY AND/OR SAFETY CLIMB.
- 2.2 FITS MONOPOLES 15" TO 50" OD.
- 3.0 MANUFACTURING/SPECIAL REQUIREMENTS
- 3.1 TIGHTEN ALL BOLTS SECURING FLAT PLATES BY THE TURN-OF-NUT METHOD. TIGHTEN ALL U-BOLTS USING TURN-OF-NUT METHOD WITH ATTENTION TO LEAVE EQUAL DISTANCE AND EQUAL FORCE ON EACH LEG OF THE U-BOLT.
- 4.0 TEST
- 5.0 PACKAGING
- 5.1 PACKAGING SHALL MEET COMMSCOPE REQUIREMENTS PER DOCUMENT IS-PL-3005.
- 5.2 PRINTED DOCUMENT TO BE PLACED INSIDE POLYBAG AND THEN IN SHIPPING CONTAINER.
- 5.3 EXTRA HARDWARE MAY BE SUPPLIED, BAGGED AND SHIPPED.



SHOULD BE INSTALLED WITH UNIVERSAL
INTERFACE PLATES FACING OUTWARDS

REVISIONS			
REV.	DESCRIPTION	DATE	APPROVED
A	INITIAL RELEASE	JL1183 07MAY24	CB1094 40194988CMO
B	SFG2292-00 WAS SFG2278; MT-651-84 WAS MT546084120; QTY GUB-4352 WAS 18 EA; ADDED GUB-4240; ADDED SHEET 4	RY1002 26NOV24	YZ1080 40209667CMO

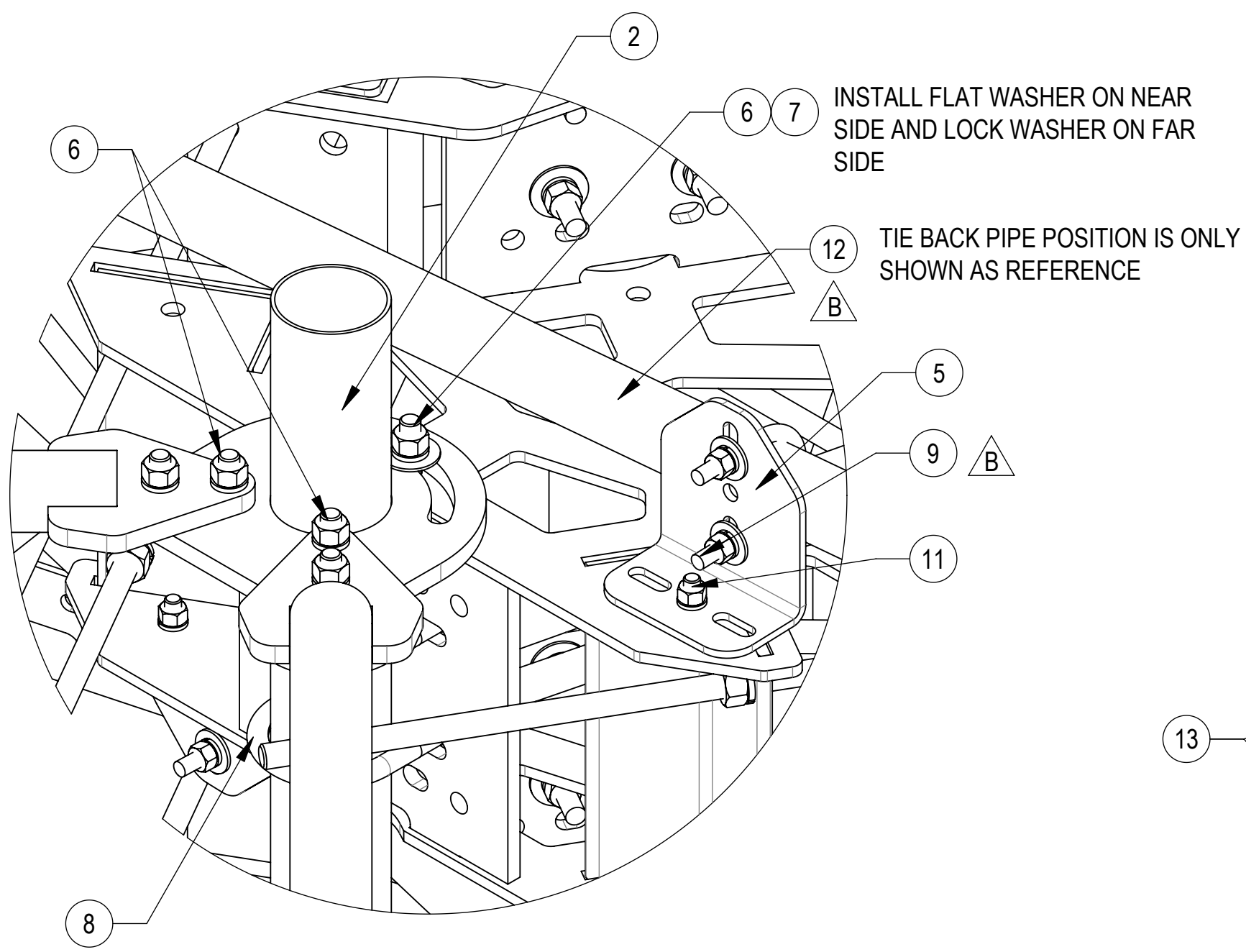
COMMSCOPE, INC. OF NORTH CAROLINA											
TOLERANCES							SAP MATERIAL MASTER				
0 PLACE X[X.] ± 0.25[6.3] 2 PLACE .XX[X.] ± 0.06[1.5]							MCG22HDX-11M-B				
1 PLACE X[X.] ± 0.12[3.0] ANGLES ± 2°											
FINISH							MATERIAL				
UNLESS OTHERWISE SPECIFIED DIMENSIONS ARE IN INCHES INTERPRET PER ANSI Y 14.5M-1994		NAME	DATE	TITLE MP,SF,11'FP,NOAP							
	CE	JL1183	07MAY24								
	RW	RY1002	12/02/2024								
	AD	YZ1080	12/04/2024	SCALE 1:20	DOCUMENT NO. MCG22HDX-11M-B						
	RE	YMENG	12/17/2024								
	ECN 40209667CMO										
	SIZE	Auth Group	INSL	MODEL			DRAWING			SHEET 1 OF 4	
C			VERSION	STATUS	REVISION	VERSION	STATUS	REVISION			
			01	RE	B	01	RE	B			

D

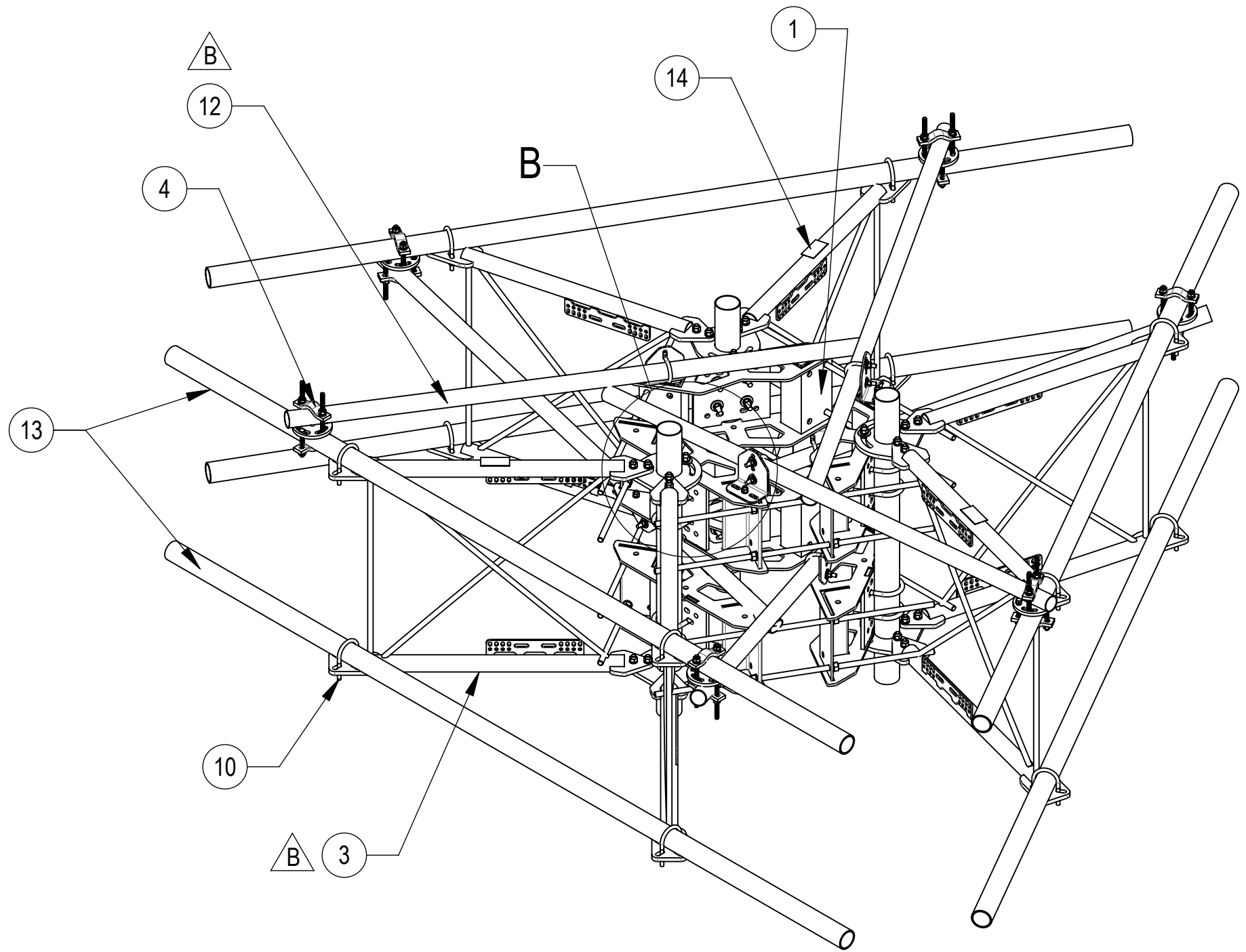
C

B

A



DETAIL B
SCALE 1 : 4

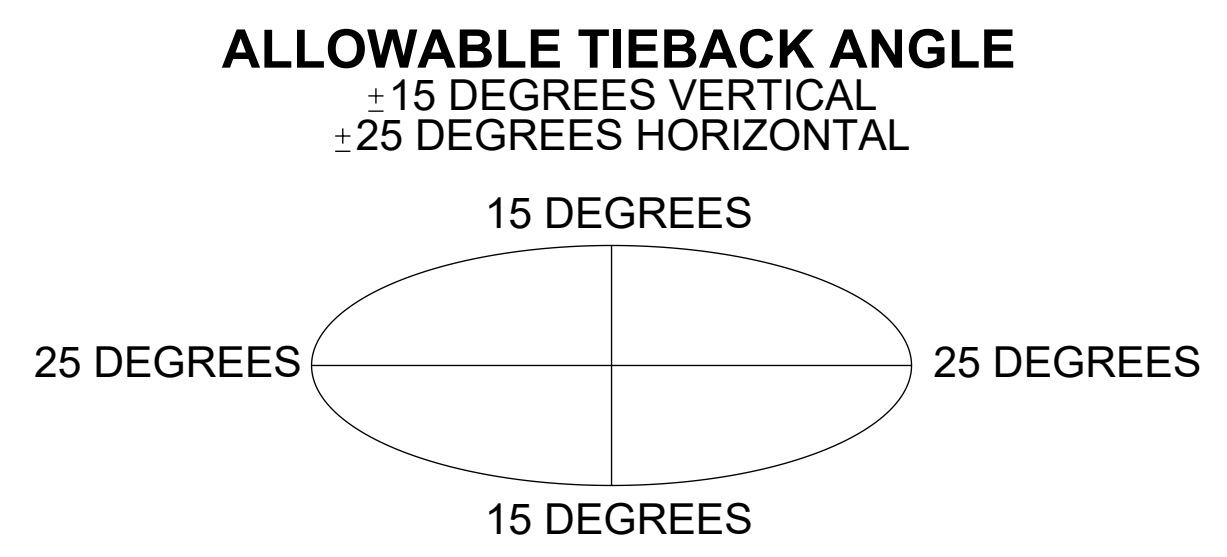


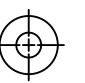
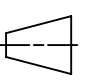
TOP

BOTTOM

COMPONENT PART NUMBERS PROVIDED FOR ASSEMBLY PURPOSES;
INDIVIDUAL COMPONENTS MAY BE SHIPPED AS PARTS WITHIN AN INCLUDED KIT.

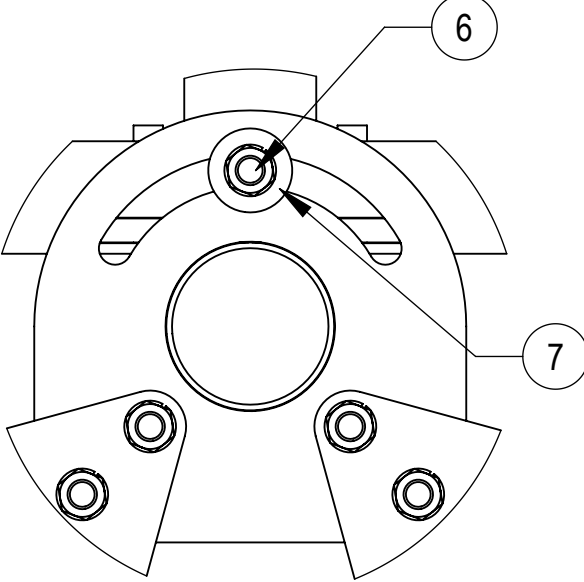
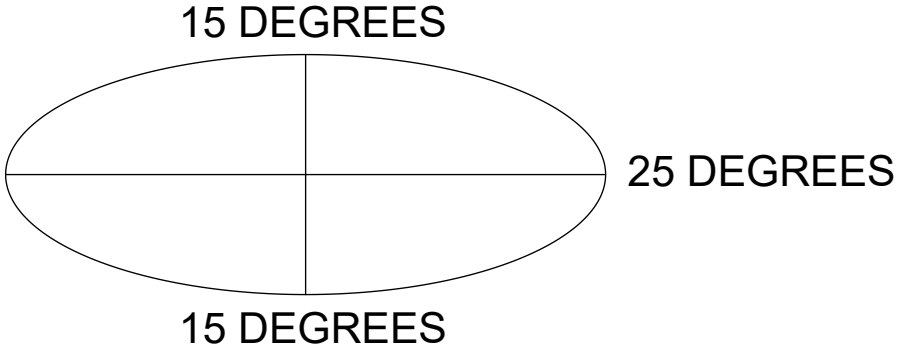
ITEM	PART NO.	DESCRIPTION	QTY.	WEIGHT	NOTE NO.
1	MC-RM1550-3	15" - 50" OD RINGMOUNT	2	229.90 LBS	
2	SFG2270	BACK VERTICAL ARM MOUNT	3	36.96 LBS	
3	SFG2292-00	WELDMENT, V-ARM, SECTOR FRAME 22	6	49.69 LBS	
4	XP-R	CROSSOVER PLATE, ROUND, UP TO 3.5" OD	6	6.20 LBS	
5	XAU01	ANGLE, CROSSOVER, 1.9-3.5" X 1.9-3.5" OD	6	2.98 LBS	
6	GB-05225	5/8" X 2-1/4" GALV BOLT KIT	30	0.28 LBS	
7	GWF-05	5/8" GALV FLAT WASHER, 1.7OD	6	0.06 LBS	
8	GUB-53560	5/8" X 3-5/8" X 6" GALV U-BOLT	12	1.30 LBS	
9	GUB-4240	1/2" X 2-1/2" X 4" GALV U-BOLT	6	0.56 LBS	
10	GUB-4352	1/2" X 3" X 5-1/4" GALV U-BOLT	12	0.71 LBS	
11	GB-04145	1/2" X 1-1/2" GALV BOLT KIT	6	0.13 LBS	
12	MT-651-84	2.375" OD X 84" PIPE	6	20.35 LBS	
13	MT546132	2.875" O.D. X 132" PIPE	6	62.64 LBS	
14	SFG2255	LABEL, SFG22HDX	3	0.04 LBS	



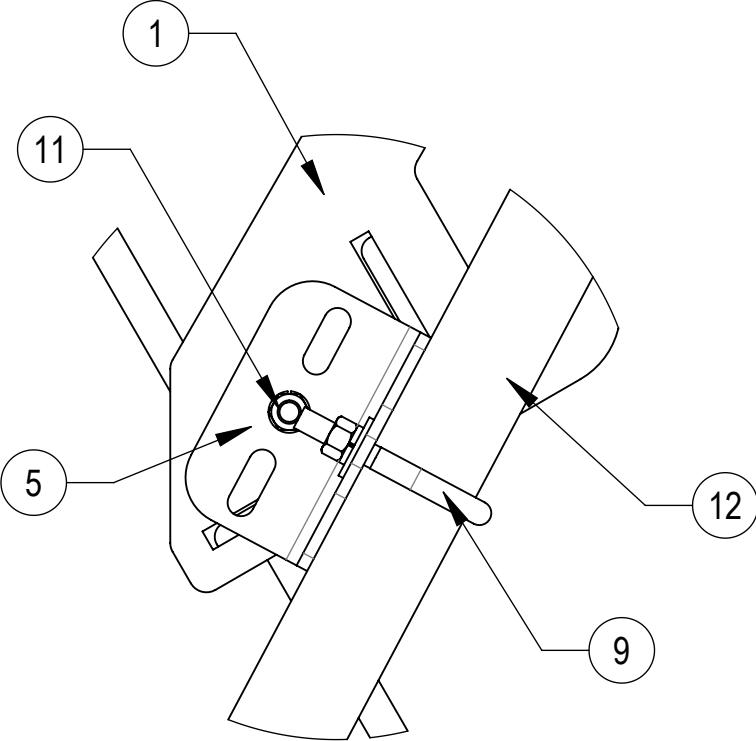
COMMSCOPE, INC. OF NORTH CAROLINA				
TITLE MP,SF,11'FP,NOAP				
SIZE C	SCALE 1:20	DOCUMENT NO. MCG22HDX-11M-B		
 	DRAWING			SHEET 2 OF 4
	VERSION 01	STATUS RE	REVISION B	

ALLOWABLE TIEBACK ANGLE

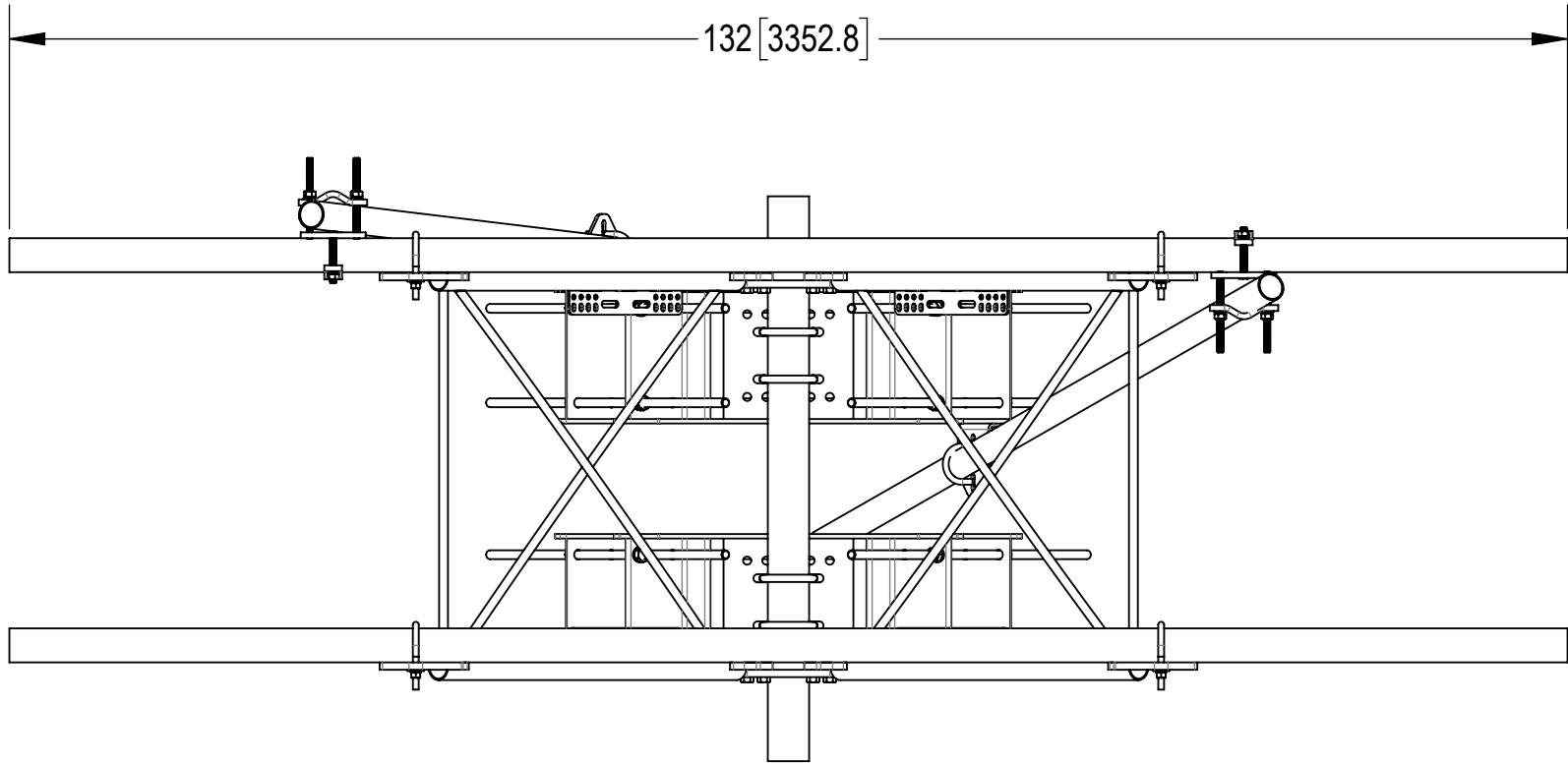
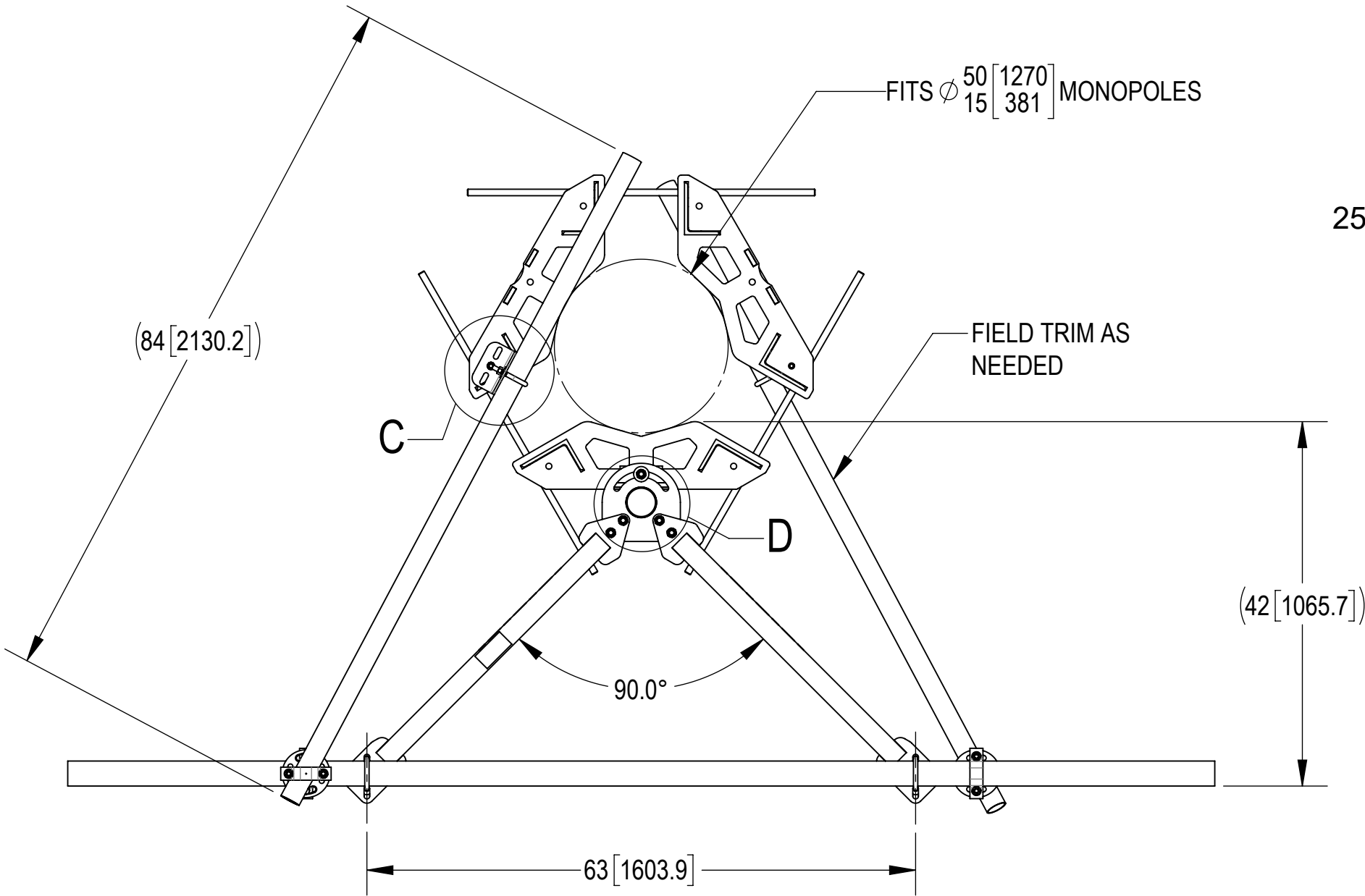
± 15 DEGREES VERTICAL
± 25 DEGREES HORIZONTAL



DETAIL D
SCALE 1 : 4

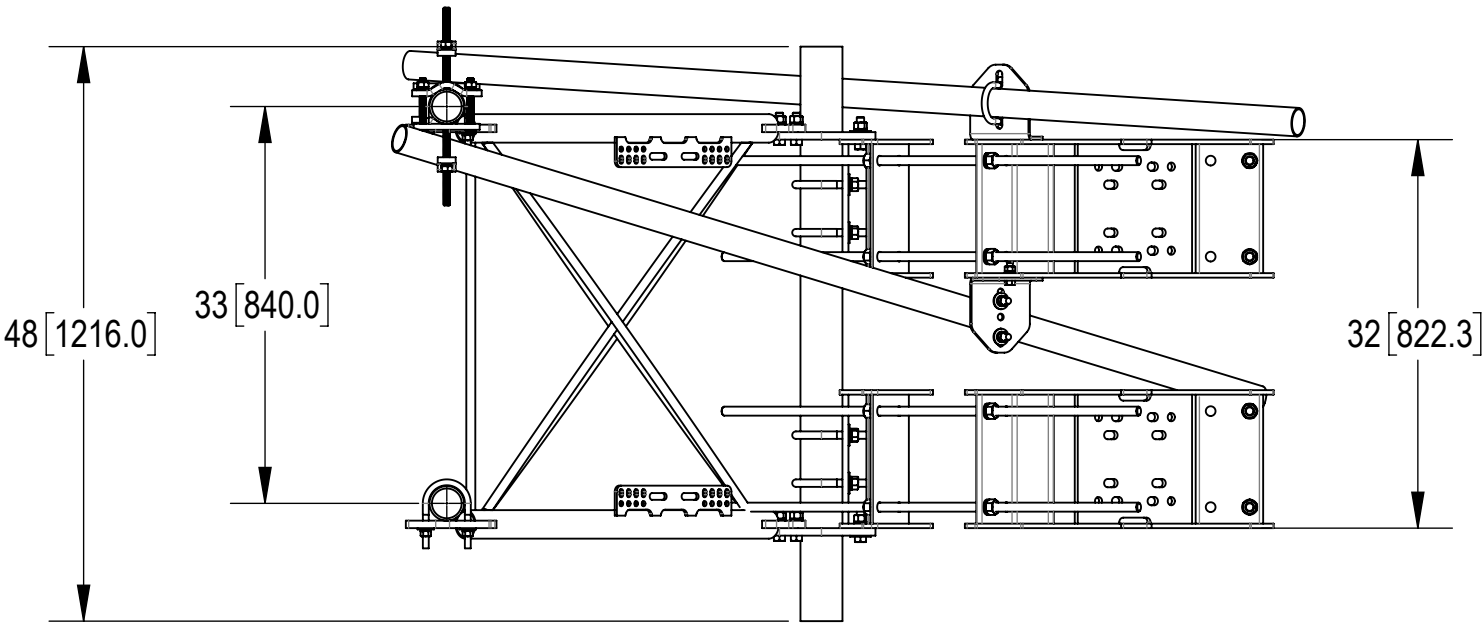


DETAIL C
SCALE 1 : 4

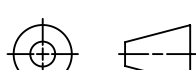


TOP

BOTTOM



SOME ITEMS OMITTED FOR CLARITY

COMMSCOPE, INC. OF NORTH CAROLINA					
TITLE					
MP,SF,11'FP,NOAP					
SIZE	SCALE	DOCUMENT NO.			
C	1:20	MCG22HDX-11M-B			
		DRAWING		SHEET 3 OF 4	
		VERSION	STATUS		REVISION
		01	RE		B

4

3

2

1

D

D

C

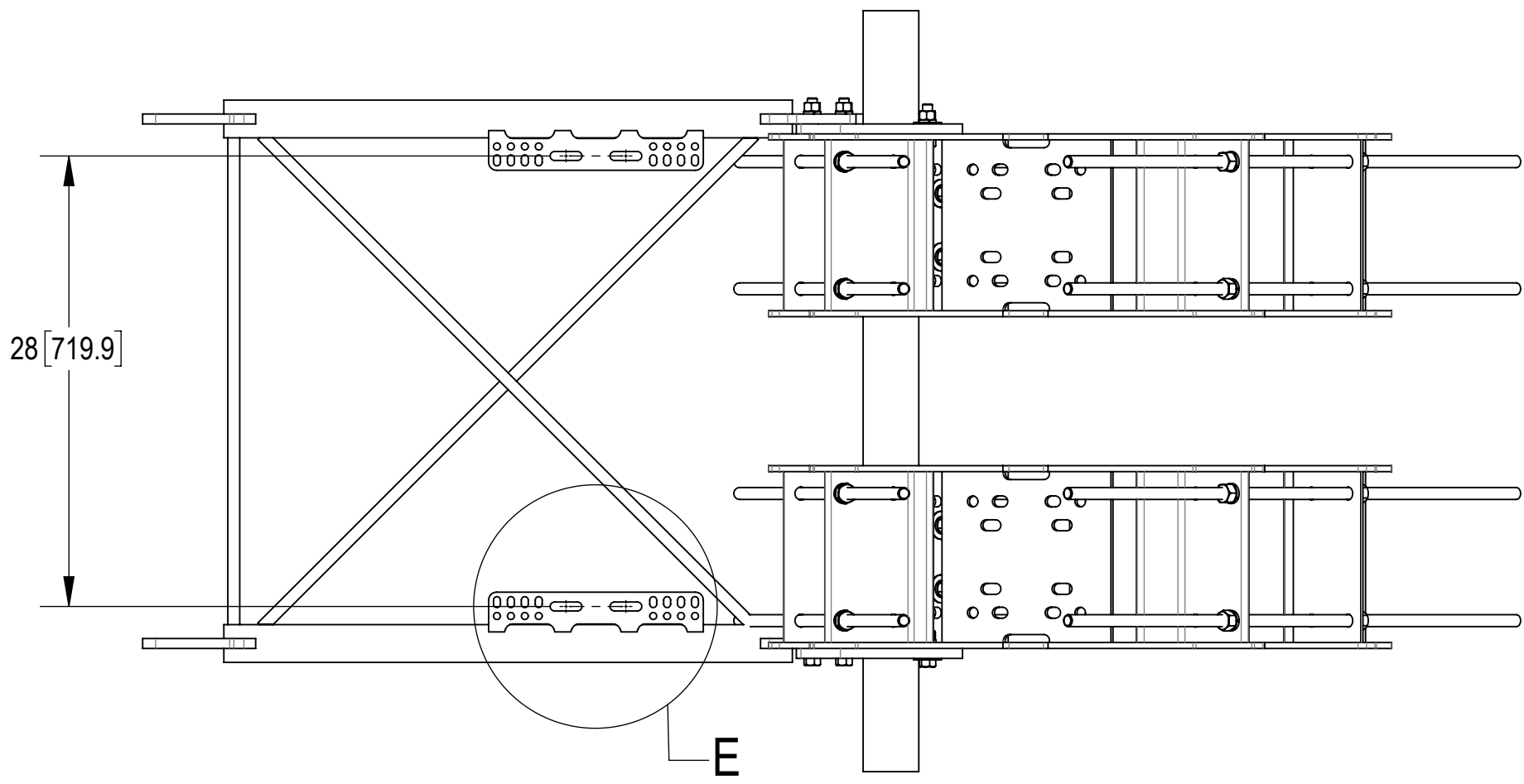
C

B

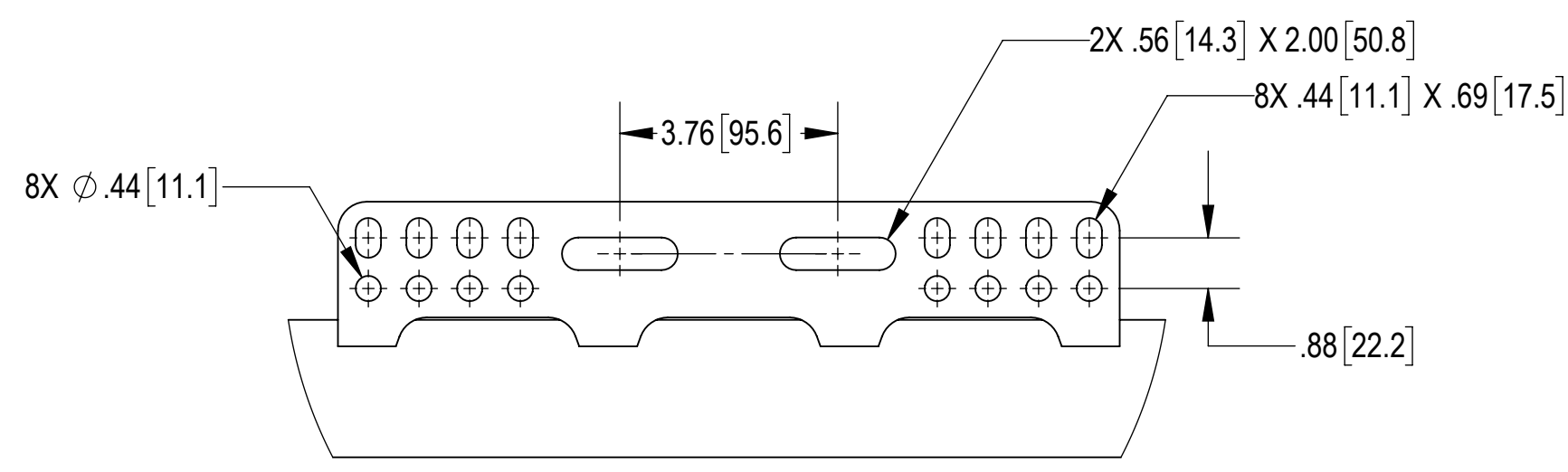
B

A

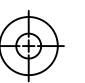
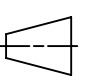
A



SIDE VIEW



DETAIL E
SCALE 1 : 3

COMMScope, INC. OF NORTH CAROLINA					
TITLE MP,SF,11'FP,NOAP					
SIZE C	SCALE 1:10	DOCUMENT NO. MCG22HDX-11M-B			
 		DRAWING			SHEET 4 OF 4
		VERSION 01	STATUS RE	REVISION B	