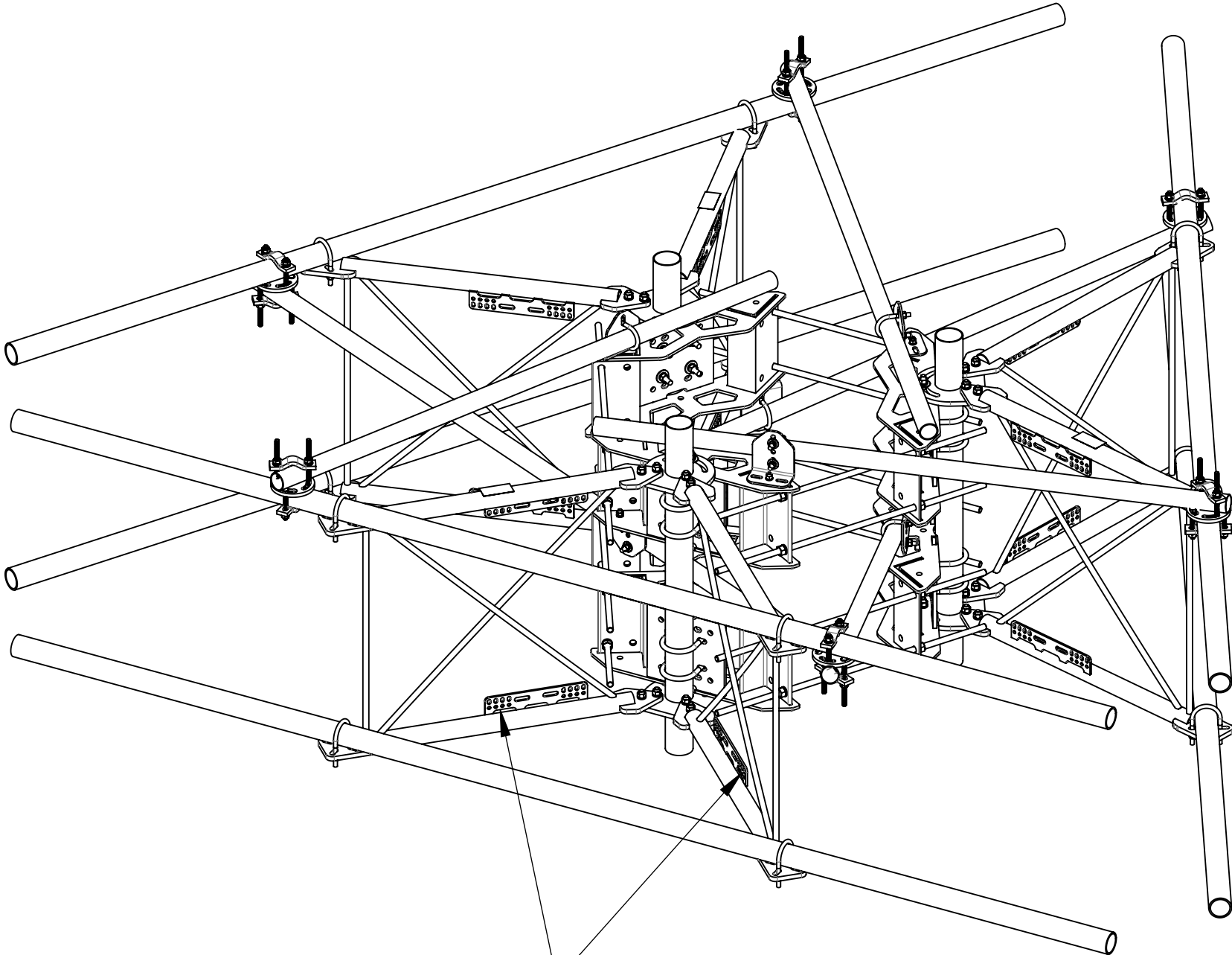

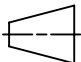


- 1.0 GENERAL NOTES
- 1.1 ALL METRIC DIMENSIONS ARE IN BRACKETS [X. X]
- 1.2 FOR PATENT INFO: <https://www.cs-pat.com>
- 2.0 DESIGN NOTES
- 2.1 ANY HAZARDS OR OBSTRUCTIONS TO THE CLIMBING FACILITY AND SAFETY CLIMB MUST BE IDENTIFIED PRIOR TO INSTALLING THE APPURTENANCE. ADDITIONAL PRODUCTS MAY BE REQUIRED TO MAINTAIN THE INTEGRITY OF THE SAFETY CLIMB. DURING INSTALLATION, TEMPORARY AND/OR PERMANENT PRECAUTIONARY MEASURES SHOULD BE TAKEN TO PRESERVE THE CLIMBING FACILITY AND/OR SAFETY CLIMB.
- 2.2 FITS MONOPOLES 15" TO 50" OD.
- 3.0 MANUFACTURING/SPECIAL REQUIREMENTS
- 3.1 TIGHTEN ALL BOLTS SECURING FLAT PLATES BY THE TURN-OF-NUT METHOD. TIGHTEN ALL U-BOLTS USING TURN-OF-NUT METHOD WITH ATTENTION TO LEAVE EQUAL DISTANCE AND EQUAL FORCE ON EACH LEG OF THE U-BOLT.
- 4.0 TEST
- 5.0 PACKAGING
- 5.1 PACKAGING SHALL MEET COMMSCOPE REQUIREMENTS PER DOCUMENT IS-PL-3005.
- 5.2 PRINTED DOCUMENT TO BE PLACED INSIDE POLYBAG AND THEN IN SHIPPING CONTAINER.
- 5.3 EXTRA HARDWARE MAY BE SUPPLIED, BAGGED AND SHIPPED.



SHOULD BE INSTALLED WITH UNIVERSAL
INTERFACE PLATES FACING OUTWARDS

REVISIONS			
REV.	DESCRIPTION	DATE	APPROVED
A	INITIAL RELEASE	JL1183 07MAY24	CB1094 40194988CMO
B	SFG2292-00 WAS SFG2278; MT-651-84 WAS MT546084120; QTY GUB-4352 WAS 18 EA; ADDED GUB-4240; ADDED SHEET 4	RY1002 27NOV24	YZ1080 40209667CMO

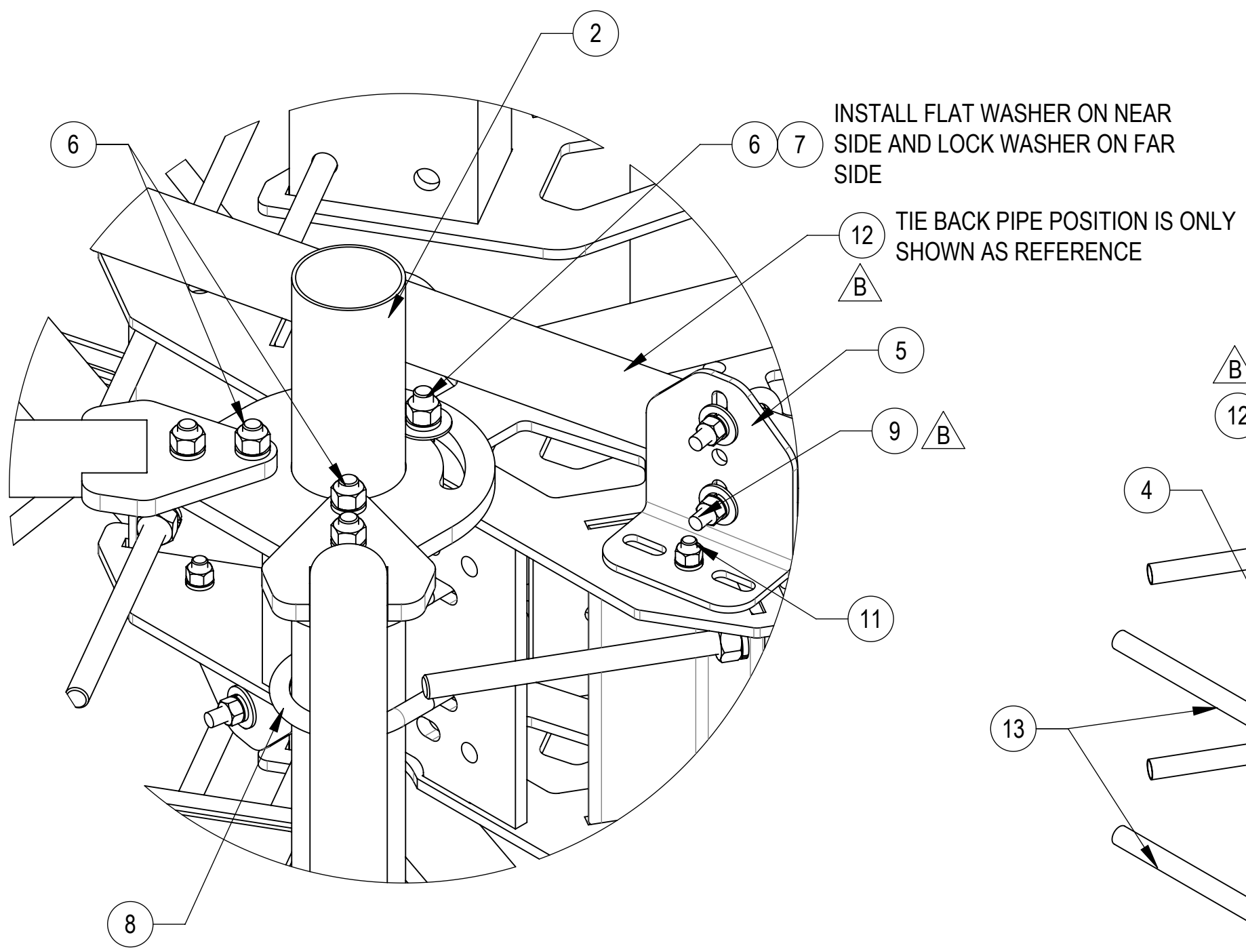
COMMSCOPE, INC. OF NORTH CAROLINA														
TOLERANCES								SAP MATERIAL MASTER						
0 PLACE X[X.] ± 0.25[6.3]				2 PLACE .XX[X.] ± 0.06[1.5]				MCG22HDX-13M-B						
1 PLACE X[X.] ± 0.12[3.0]				ANGLES ± 2°										
FINISH								MATERIAL						
UNLESS OTHERWISE SPECIFIED DIMENSIONS ARE IN INCHES INTERPRET PER ANSI Y 14.5M-1994		NAME	DATE	MP,SF,13'FP,NOAP										
	CE	JL1183	07MAY24											
	RW	RY1002	12/03/2024											
	AD	YZ1080	12/04/2024											
	RE	YMENG	12/17/2024											
	ECN 40209667CMO			SCALE		DOCUMENT NO.								
	1:18		MCG22HDX-13M-B											
SIZE	Auth Group	INSL	MODEL			DRAWING						SHEET 1 OF 4		
C			VERSION	STATUS	REVISION	VERSION	STATUS							REVISION
			01	RE	B	01	RE					B		

D

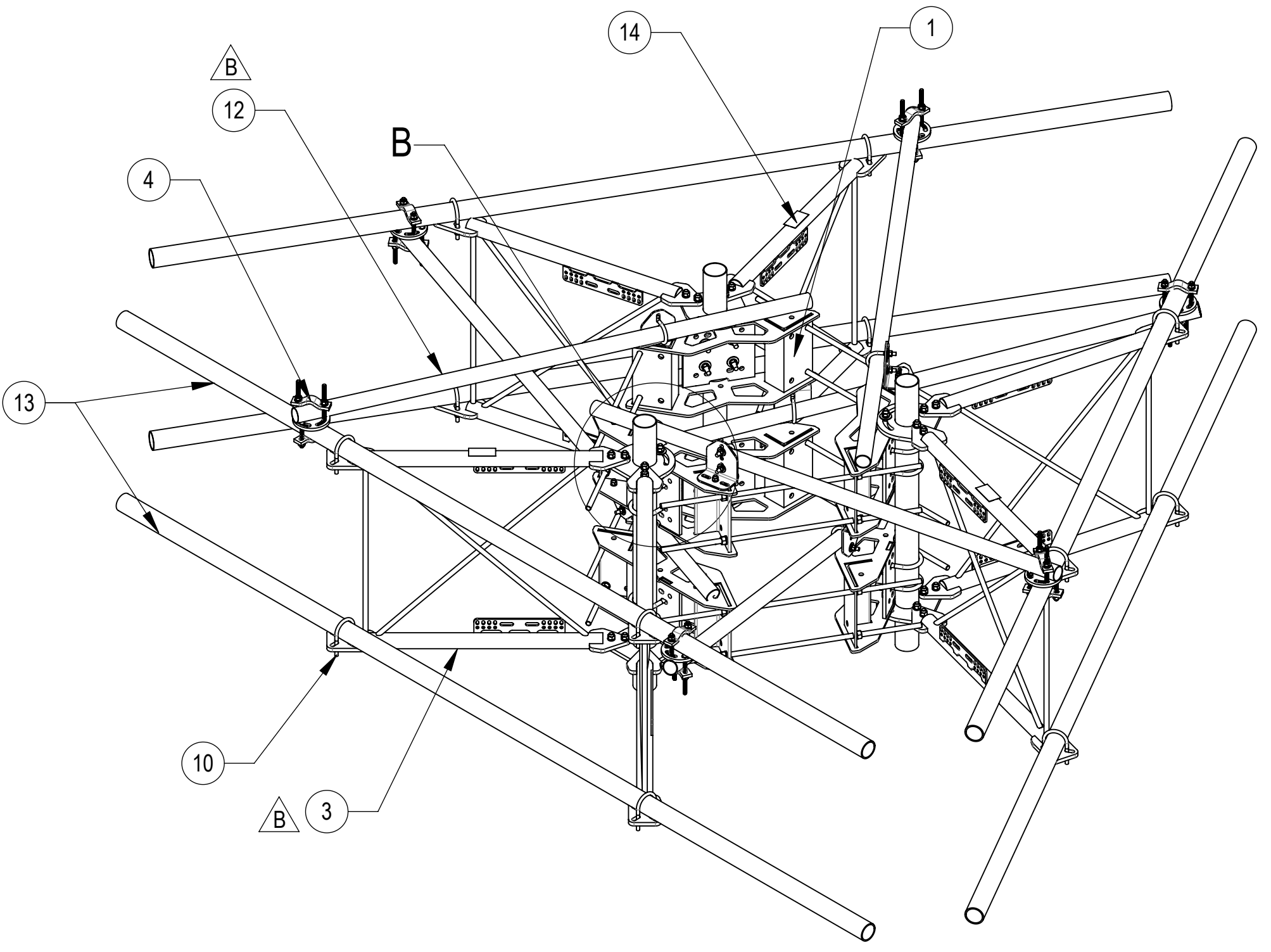
C

B

A



DETAIL B
SCALE 1 : 4



TOP

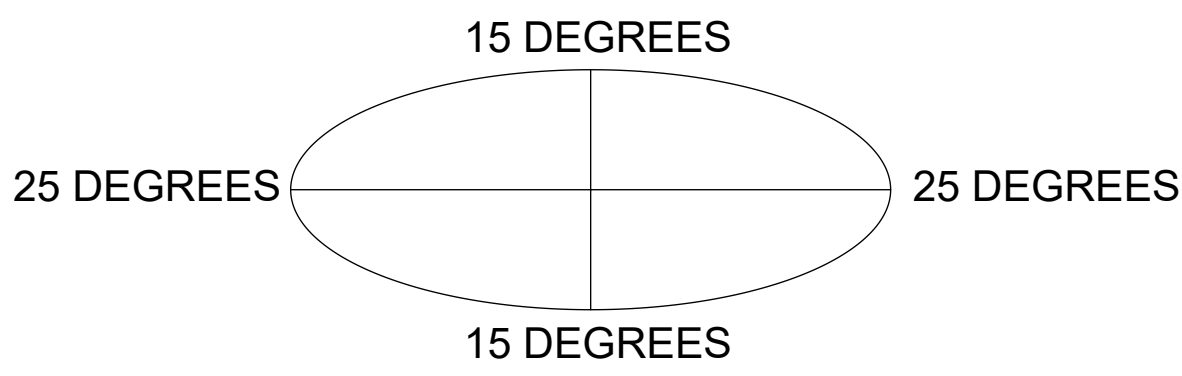
BOTTOM


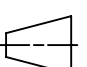
COMPONENT PART NUMBERS PROVIDED FOR ASSEMBLY PURPOSES;
INDIVIDUAL COMPONENTS MAY BE SHIPPED AS PARTS WITHIN AN INCLUDED KIT.

ITEM	PART NO.	DESCRIPTION	QTY.	WEIGHT	NOTE NO.
1	MC-RM1550-3	15" - 50" OD RINGMOUNT	2	229.90 LBS	
2	SFG2270	BACK VERTICAL ARM MOUNT	3	36.96 LBS	
3	SFG2292-00	WELDMENT, V-ARM, SECTOR FRAME 22	6	49.69 LBS	
4	XP-R	CROSSOVER PLATE, ROUND, UP TO 3.5" OD	6	6.20 LBS	
5	XAU01	ANGLE, CROSSOVER, 1.9-3.5" X 1.9-3.5" OD	6	2.98 LBS	
6	GB-05225	5/8" X 2-1/4" GALV BOLT KIT	30	0.28 LBS	
7	GWF-05	5/8" GALV FLAT WASHER, 1.7OD	6	0.06 LBS	
8	GUB-53560	5/8" X 3-5/8" X 6" GALV U-BOLT	12	1.30 LBS	
9	GUB-4240	1/2" X 2-1/2" X 4" GALV U-BOLT	6	0.56 LBS	
10	GUB-4352	1/2" X 3" X 5-1/4" GALV U-BOLT	12	0.71 LBS	
11	GB-04145	1/2" X 1-1/2" GALV BOLT KIT	6	0.13 LBS	
12	MT-651-84	2.375" OD X 84" PIPE	6	20.35 LBS	
13	MT546156	2.875" O.D. X 156" PIPE	6	75.58 LBS	
14	SFG2255	LABEL, SFG22HDX	3	0.04 LBS	

ALLOWABLE TIEBACK ANGLE

±15 DEGREES VERTICAL
±25 DEGREES HORIZONTAL



COMMSCOPE, INC. OF NORTH CAROLINA				
TITLE MP,SF,13'FP,NOAP				
SIZE C	SCALE 1:18	DOCUMENT NO. MCG22HDX-13M-B		
 		DRAWING		
		VERSION 01	STATUS RE	REVISION B
				SHEET 2 OF 4

4

3

2

1

D

D

C

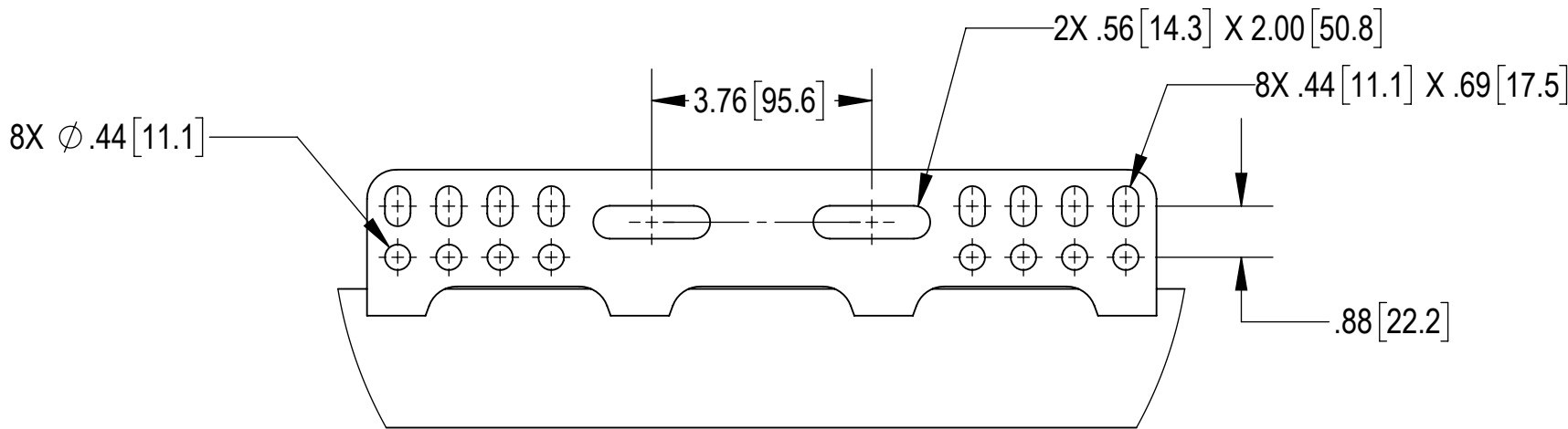
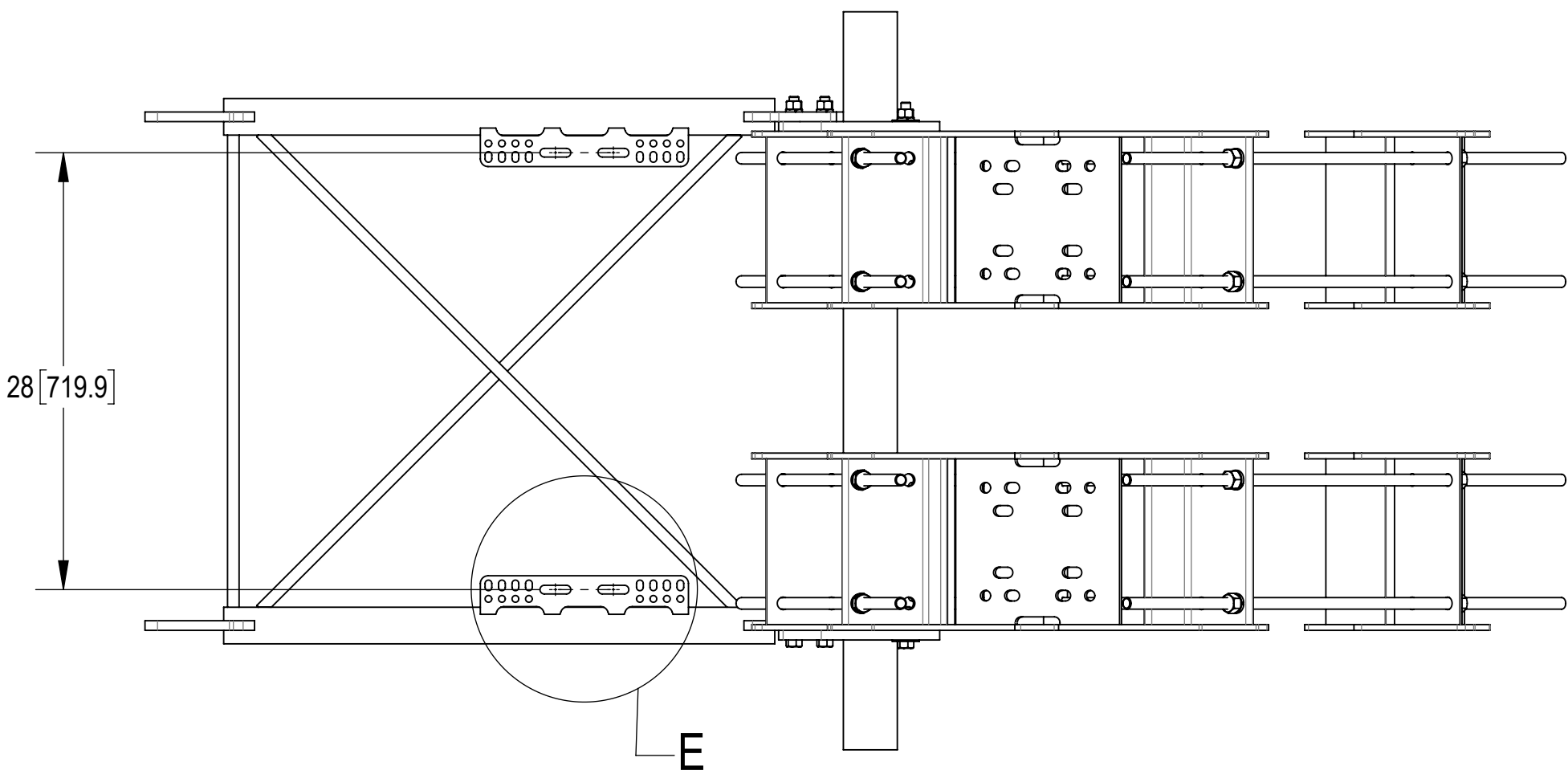
C

B

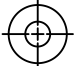
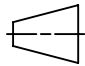
B

A

A



DETAIL E
SCALE 1 : 3

COMMScope, INC. OF NORTH CAROLINA				
TITLE MP,SF,13'FP,NOAP				
SIZE C	SCALE 1:10	DOCUMENT NO. MCG22HDX-13M-B		
 		DRAWING		
		VERSION 01	STATUS RE	REVISION B
				SHEET 4 OF 4