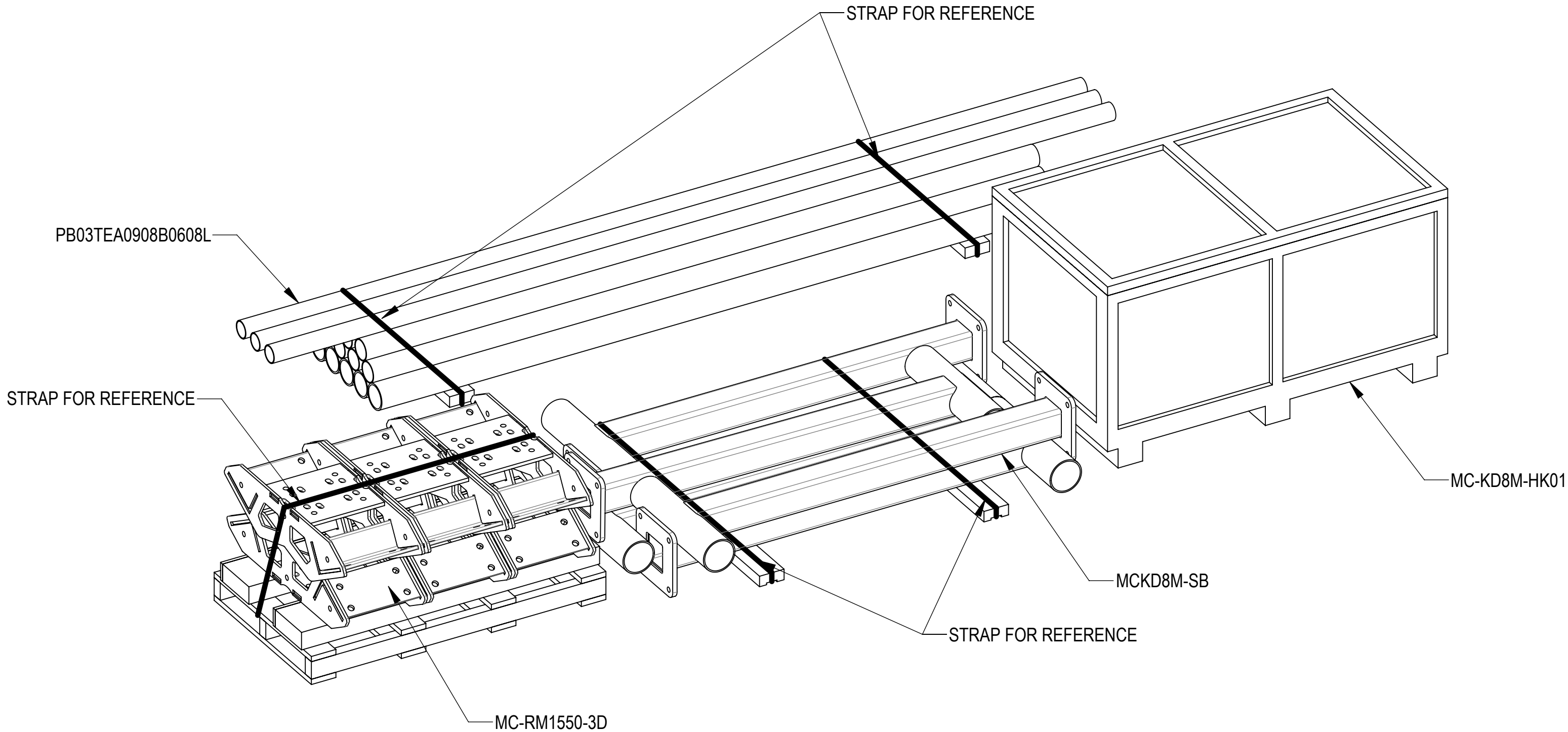




- 4
- 3
- 2
- 1
- 1.0 GENERAL NOTES
- 1.1 ALL METRIC DIMENSIONS ARE IN BRACKETS [X. X]
- 1.2 FOR PATENT INFO: <https://www.cs-pat.com>
- 2.0 DESIGN NOTES
- 2.1 ANY HAZARDS OR OBSTRUCTIONS TO THE CLIMBING FACILITY AND SAFETY CLIMB MUST BE IDENTIFIED PRIOR TO INSTALLING THE APPURTENANCE. ADDITIONAL PRODUCTS MAY BE REQUIRED TO MAINTAIN THE INTEGRITY OF THE SAFETY CLIMB. DURING INSTALLATION, TEMPORARY AND/OR PERMANENT PRECAUTIONARY MEASURES SHOULD BE TAKEN TO PRESERVE THE CLIMBING FACILITY AND/OR SAFETY CLIMB.
- 2.2 FITS MONOPOLES 15" TO 50" OD.
- 3.0 MANUFACTURING/SPECIAL REQUIREMENTS
- 3.1 TIGHTEN ALL BOLTS SECURING FLAT PLATES BY THE TURN-OF-NUT METHOD. TIGHTEN ALL U-BOLTS USING TURN-OF-NUT METHOD WITH ATTENTION TO LEAVE EQUAL DISTANCE AND EQUAL FORCE ON EACH LEG OF THE U-BOLT.
- 4.0 TEST
- 5.0 PACKAGING
- 5.1 PACKAGING SHALL MEET COMMSCOPE REQUIREMENTS PER DOCUMENT IS-PL-3005.
- 5.2 PRINTED DOCUMENT TO BE PLACED INSIDE POLYBAG AND THEN IN SHIPPING CONTAINER.
- 5.3 EXTRA HARDWARE MAY BE SUPPLIED, BAGGED AND SHIPPED.

REVISIONS			
REV.	DESCRIPTION	DATE	APPROVED
A	INITIAL RELEASE	YX1027 25NOV24	YZ1080 40209663CMO



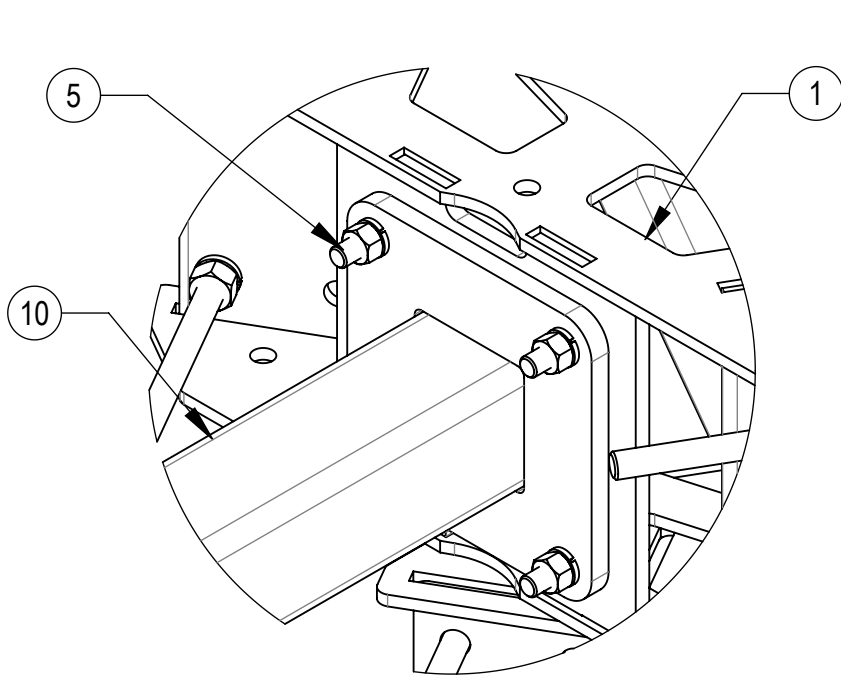
COMMSCOPE, INC. OF NORTH CAROLINA													
TOLERANCES						SAP MATERIAL MASTER							
1 PLACE .X[X] ± .2[6.3]						3 PLACE .XXX[X] ± .060[1.5]							
2 PLACE .XX[X] ± .12[3.0]						ANGLES ± 2°							
FINISH						MATERIAL							
UNLESS OTHERWISE SPECIFIED DIMENSIONS ARE IN INCHES INTERPRET PER ANSI Y 14.5M-1994		NAME		DATE		TITLE MONOPOLE,DBL T-ARM,8'FACE,(9) 96" AP							
	CE	YX1027		25NOV24									
	RW	YX1027		12/22/2024									
						SCALE 1:32							
	AD	YZ1080		12/22/2024									
	RE	YMENG		12/22/2024									
	ECN 40209663CMO						DOCUMENT NO. MC-KD8M-9-96						
SIZE		Auth Group		INSL		MODEL			DRAWING			SHEET 1 OF 3	
C						VERSION 00		STATUS RE		REVISION A			

4

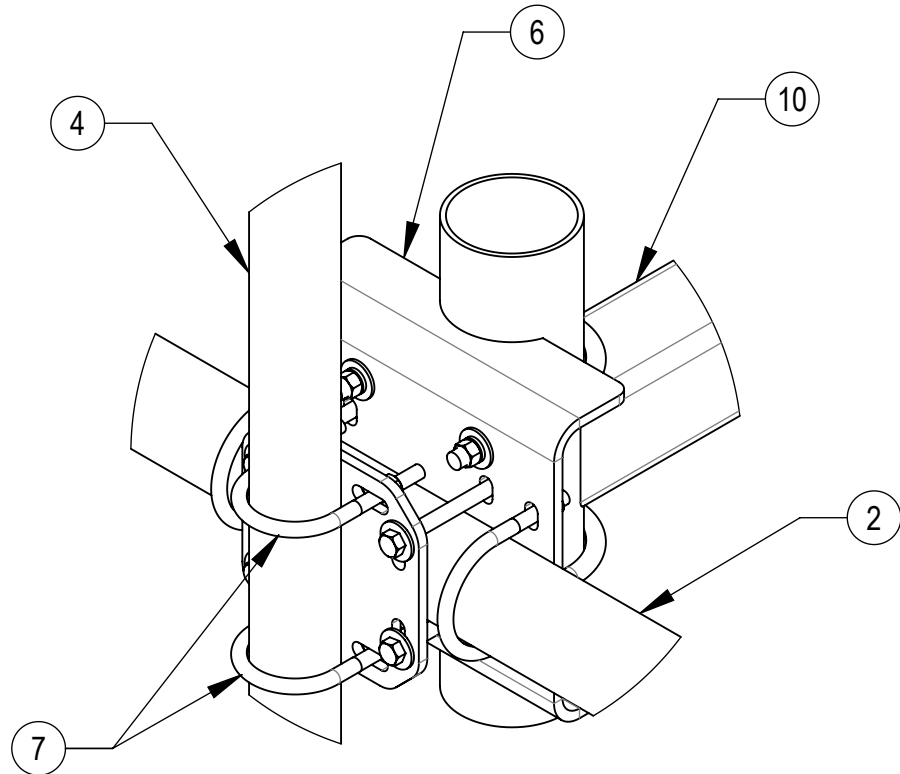
3

2

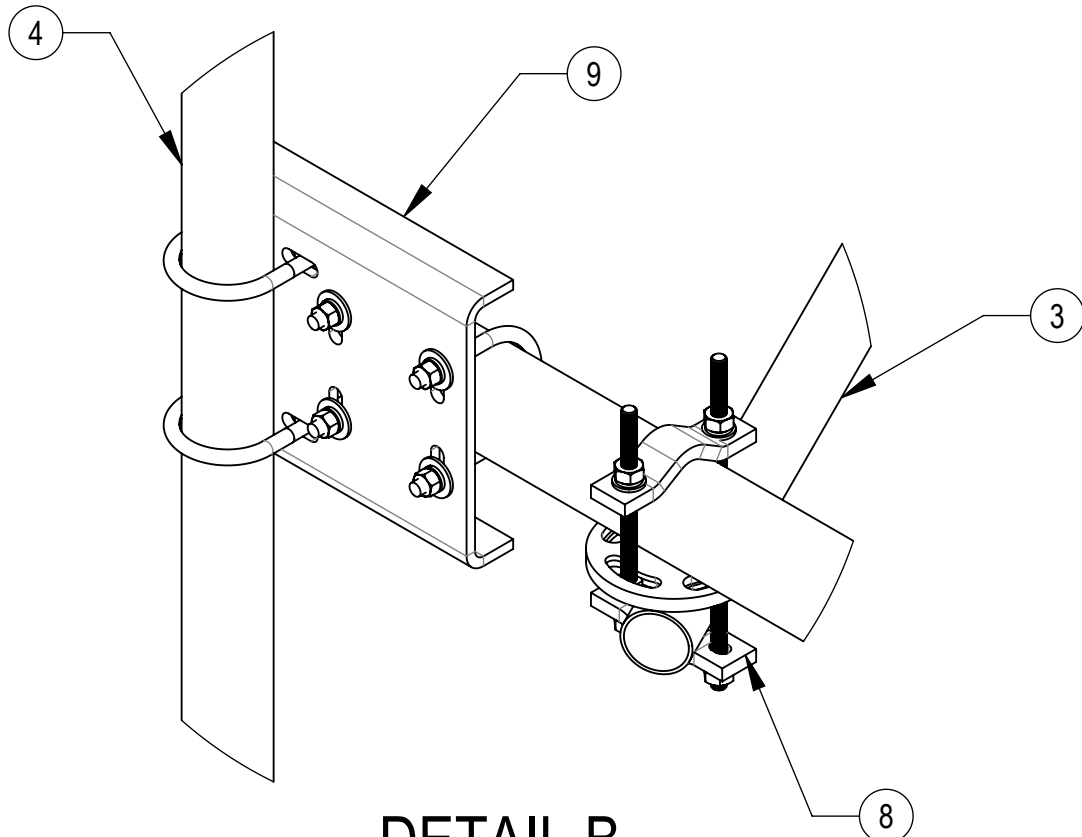
1



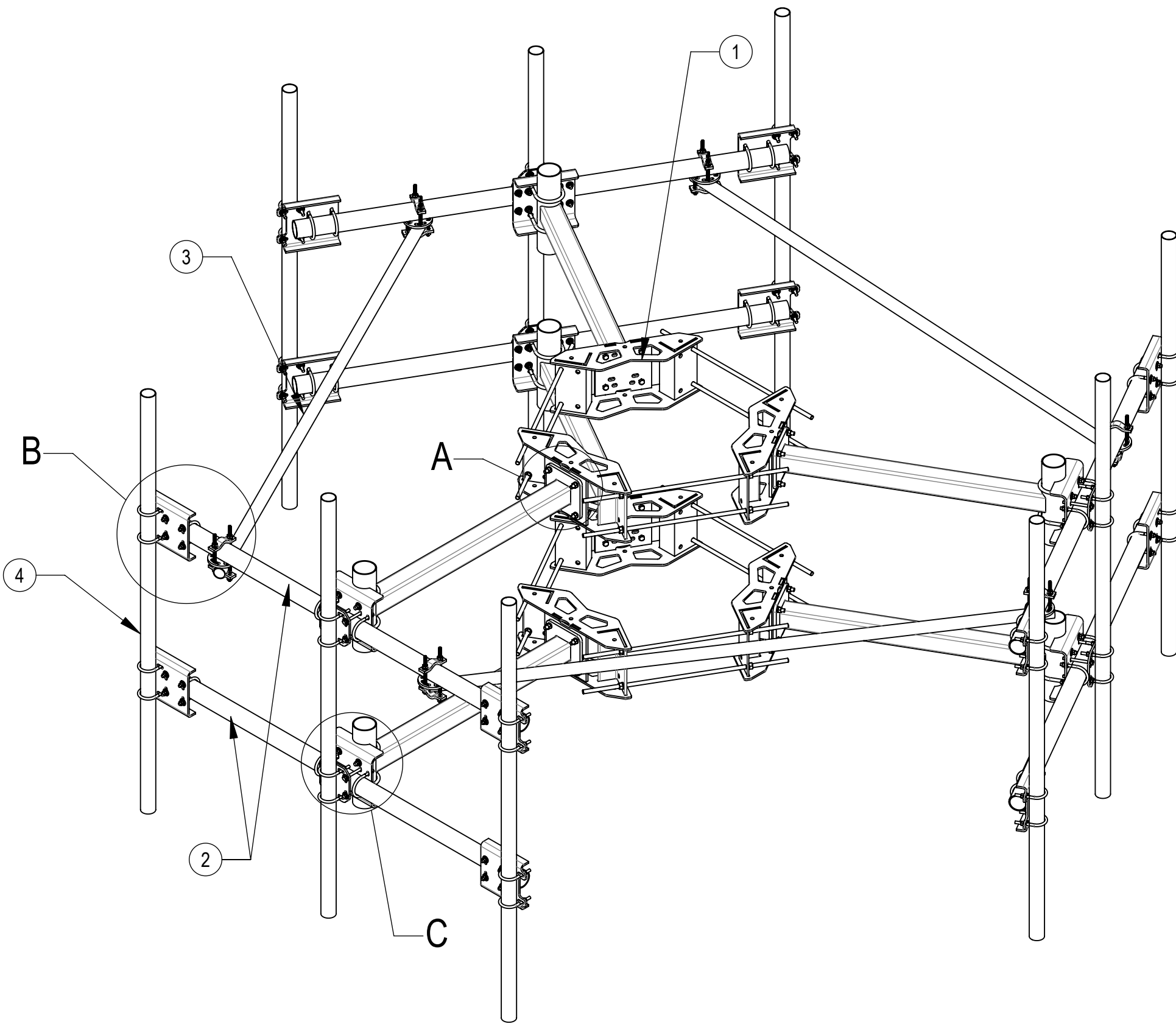
DETAIL A
SCALE 1 : 5



DETAIL C
SCALE 1 : 6



DETAIL B
SCALE 1 : 6

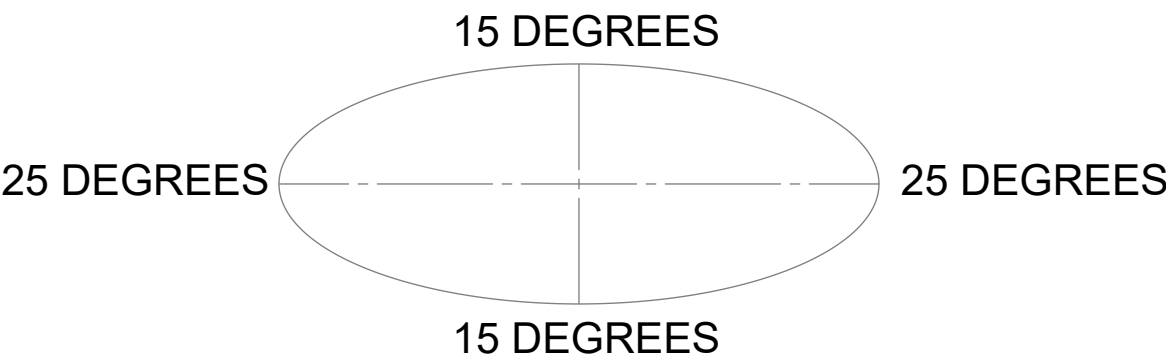



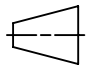
COMPONENT PART NUMBERS PROVIDED FOR ASSEMBLY PURPOSES;
INDIVIDUAL COMPONENTS MAY BE SHIPPED AS PARTS WITHIN AN INCLUDED KIT.

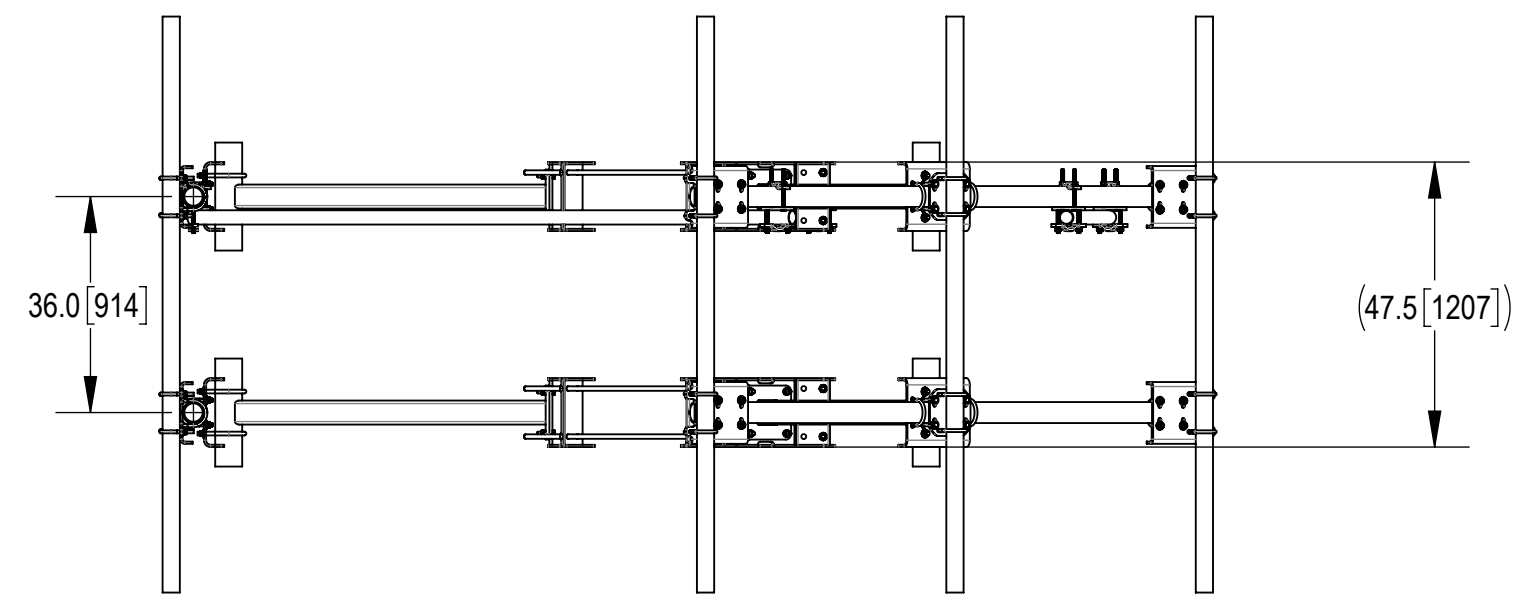
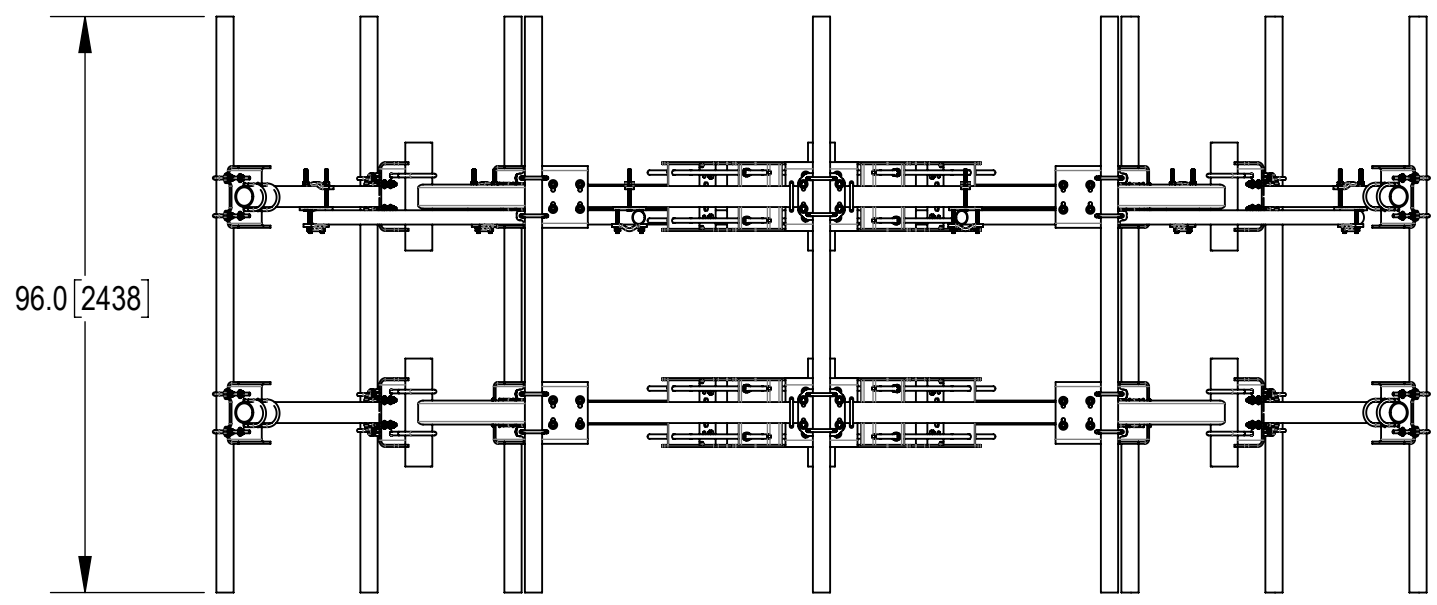
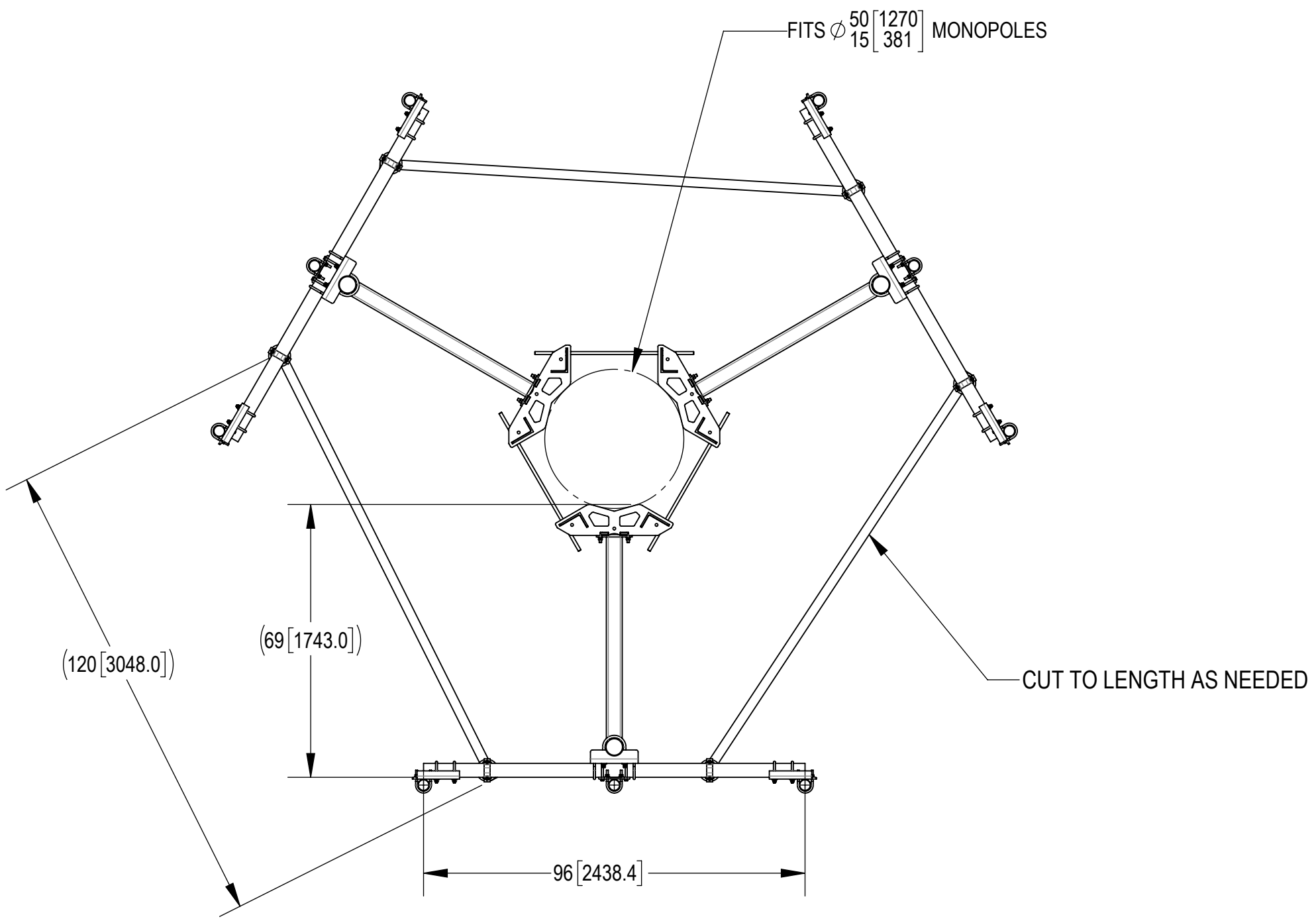
ITEM NO.	PART NUMBER	DESCRIPTION	QTY.	WEIGHT	NOTE NO.
1	MC-RM1550-3	15" - 50" OD RINGMOUNT	2	229.90 LBS	
2	MTC54796216	3-1/2"OD X 96" GALV PIPE	6	60.83 LBS	
3	MT-651-120	PIPE, 2.375"OD X 120"	3	29.07 LBS	
4	MT54696120	PIPE, 2.875"OD X 96"	9	28.35 LBS	
5	GB-0524A	5/8" X 2-1/2" GALV BOLT KIT (A325)	24	0.30 LBS	
6	MTC4174PM56	PIPE MOUNT BRACKET,4-1/2"OD TO3.5"PIPE	6	32.4 LBS	
7	GUB-4352	1/2" X 3" X 5-1/4" GALV U-BOLT	12	0.71 LBS	
8	XP-R	CROSSOVER PLATE, ROUND, UP TO 3.5" OD	6	6.20 LBS	
9	XP-2530-OFF	OFFSET CO PLATE KIT,2-7/8ODX3-1/2OD	12	17.90 LBS	
10	MT19706-00	36" SINGLE SUPPORT ARM	6	76.15 LBS	

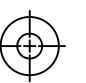
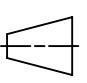
ALLOWABLE TIEBACK ANGLE

±15 DEGREES VERTICAL
±25 DEGREES HORIZONTAL



COMMSCOPE, INC. OF NORTH CAROLINA					
TITLE MONOPOLE,DBL T-ARM,8'FACE,(9) 96" AP					
SIZE C	SCALE 1:32	DOCUMENT NO. MC-KD8M-9-96			
 		DRAWING			SHEET 2 OF 3
		VERSION 00	STATUS RE	REVISION A	



COMMScope, INC. OF NORTH CAROLINA				
TITLE MONOPOLE,DBL T-ARM,8'FACE,(9) 96" AP				
SIZE C	SCALE 1:32	DOCUMENT NO. MC-KD8M-9-96		
 		DRAWING		
		VERSION 00	STATUS RE	REVISION A
				SHEET 3 OF 3