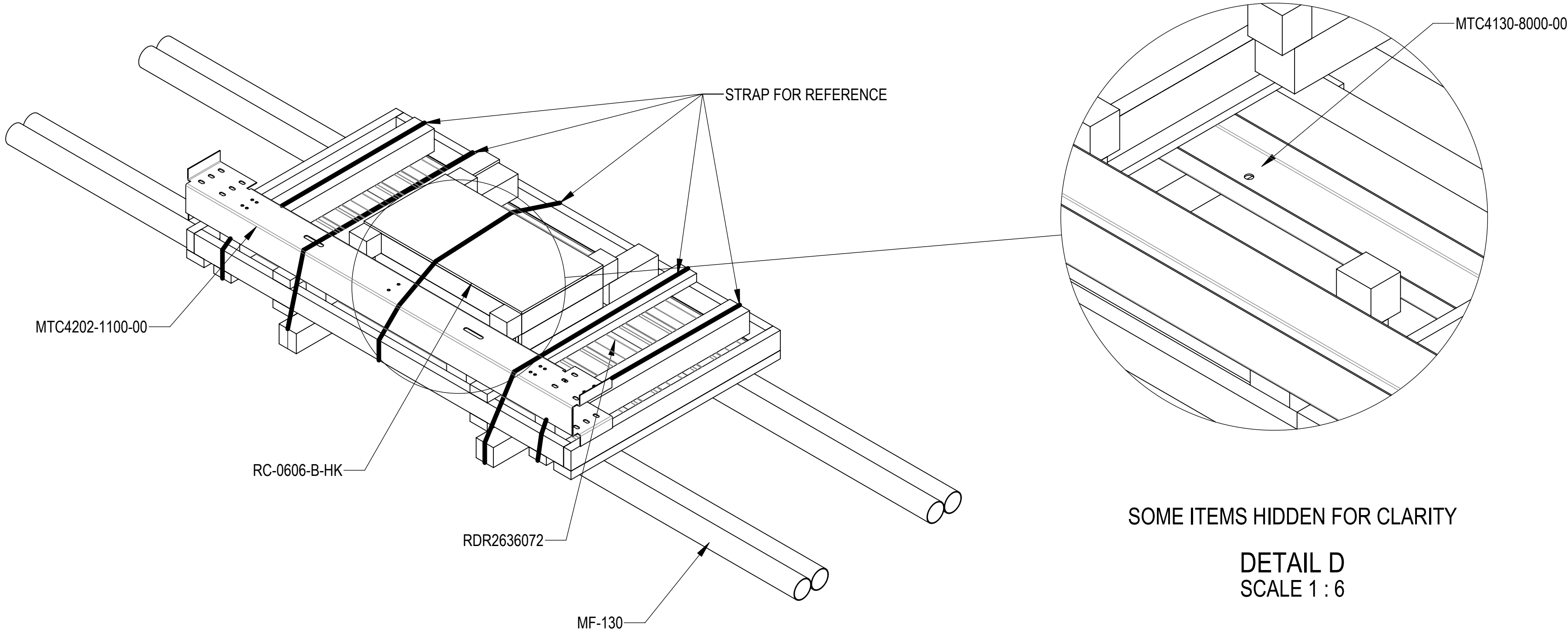

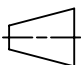


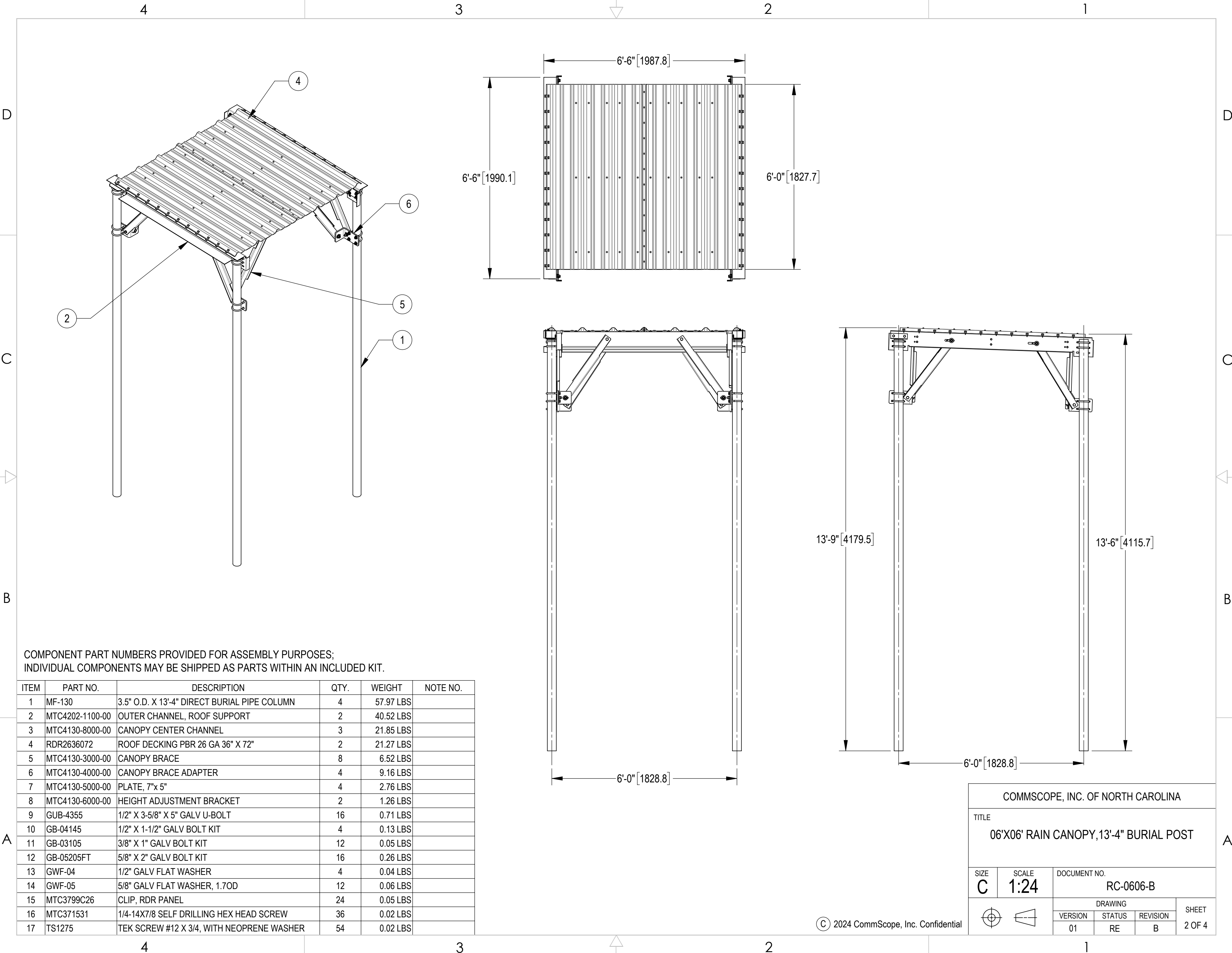
- 4
- 3
- 2
- 1
- 1.0 GENERAL NOTES
- 1.1 ALL METRIC DIMENSIONS ARE IN BRACKETS [X.X]
- 1.2 FOR PATENT INFO: <https://www.cs-pat.com>
- 2.0 DESIGN NOTES
- 2.1 ANY HAZARDS OR OBSTRUCTIONS TO THE CLIMBING FACILITY AND SAFETY CLIMB MUST BE IDENTIFIED PRIOR TO INSTALLING THE APPURTENANCE. ADDITIONAL PRODUCTS MAY BE REQUIRED TO MAINTAIN THE INTEGRITY OF THE SAFETY CLIMB. DURING INSTALLATION, TEMPORARY AND/OR PERMANENT PRECAUTIONARY MEASURES SHOULD BE TAKEN TO PRESERVE THE CLIMBING FACILITY AND/OR SAFETY CLIMB.
- 3.0 MANUFACTURING/SPECIAL REQUIREMENTS
- 3.1 TIGHTEN ALL BOLTS SECURING FLAT PLATES BY THE TURN-OF-NUT METHOD. TIGHTEN ALL U-BOLTS USING TURN-OF-NUT METHOD WITH ATTENTION TO LEAVE EQUAL DISTANCE AND EQUAL FORCE ON EACH LEG OF THE U-BOLT.
- 3.2 THE VERTICAL POSTS CAN BE FIELD TRIMMED AS NEEDED AND ALL CUTS ARE TO BE TREATED WITH COLD GALVANIZING COMPOUND.
- 4.0 TEST
- 5.0 PACKAGING
- 5.1 PACKAGING SHALL MEET COMMSCOPE REQUIREMENTS PER DOCUMENT IS-PL-3005
- 5.2 PRINTED DOCUMENT TO BE PLACED INSIDE POLYBAG AND THEN IN SHIPPING CONTAINER
- 5.3 EXTRA HARDWARE MAY BE SUPPLIED, BAGGED AND SHIPPED

REVISIONS			
REV.	DESCRIPTION	DATE	APPROVED
A	INITIAL RELEASE	LL1090 11SEP24	YW1047 40204262CMO
B	SHEET3: SHOW CORRECT VIEW MTC4130-8000-00 (ITEM 3) QTY 3 WAS 2	JL1183 09APR25	YW1047 50102377AMO



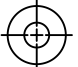
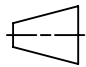
PACKAGE VIEW

COMMSCOPE, INC. OF NORTH CAROLINA																			
TOLERANCES						SAP MATERIAL MASTER													
1 PLACE .X[X] ± 0.2[6.3]						3 PLACE .XXX[X] ± 0.060[1.5]													
2 PLACE .XX[X] ± 0.12[3.0]						ANGLES ± 2°													
FINISH						MATERIAL													
UNLESS OTHERWISE SPECIFIED DIMENSIONS ARE IN INCHES INTERPRET PER ANSI Y 14.5M-1994		NAME		DATE		TITLE													
	CE	LL1090		11SEP24		06'X06' RAIN CANOPY, 13'-4" BURIAL POST													
	RW	JL1183		04/08/2025															
						SCALE 1:24 DOCUMENT NO. RC-0606-B													
	AD	YW1047		04/09/2025															
	RE	JL1183		04/09/2025															
	ECN 50102377AMO																		
	SIZE		Auth Group		INSL		MODEL			DRAWING			SHEET						
C						VERSION		STATUS		REVISION		VERSION		STATUS		REVISION		1 OF 4	
						01		RE		A		01		RE		B			



COMPONENT PART NUMBERS PROVIDED FOR ASSEMBLY PURPOSES;
INDIVIDUAL COMPONENTS MAY BE SHIPPED AS PARTS WITHIN AN INCLUDED KIT.

ITEM	PART NO.	DESCRIPTION	QTY.	WEIGHT	NOTE NO.
1	MF-130	3.5" O.D. X 13'-4" DIRECT BURIAL PIPE COLUMN	4	57.97 LBS	
2	MTC4202-1100-00	OUTER CHANNEL, ROOF SUPPORT	2	40.52 LBS	
3	MTC4130-8000-00	CANOPY CENTER CHANNEL	3	21.85 LBS	
4	RDR2636072	ROOF DECKING PBR 26 GA 36" X 72"	2	21.27 LBS	
5	MTC4130-3000-00	CANOPY BRACE	8	6.52 LBS	
6	MTC4130-4000-00	CANOPY BRACE ADAPTER	4	9.16 LBS	
7	MTC4130-5000-00	PLATE, 7"x 5"	4	2.76 LBS	
8	MTC4130-6000-00	HEIGHT ADJUSTMENT BRACKET	2	1.26 LBS	
9	GUB-4355	1/2" X 3-5/8" X 5" GALV U-BOLT	16	0.71 LBS	
10	GB-04145	1/2" X 1-1/2" GALV BOLT KIT	4	0.13 LBS	
11	GB-03105	3/8" X 1" GALV BOLT KIT	12	0.05 LBS	
12	GB-05205FT	5/8" X 2" GALV BOLT KIT	16	0.26 LBS	
13	GWF-04	1/2" GALV FLAT WASHER	4	0.04 LBS	
14	GWF-05	5/8" GALV FLAT WASHER, 1.7OD	12	0.06 LBS	
15	MTC3799C26	CLIP, RDR PANEL	24	0.05 LBS	
16	MTC371531	1/4-14X7/8 SELF DRILLING HEX HEAD SCREW	36	0.02 LBS	
17	TS1275	TEK SCREW #12 X 3/4, WITH NEOPRENE WASHER	54	0.02 LBS	

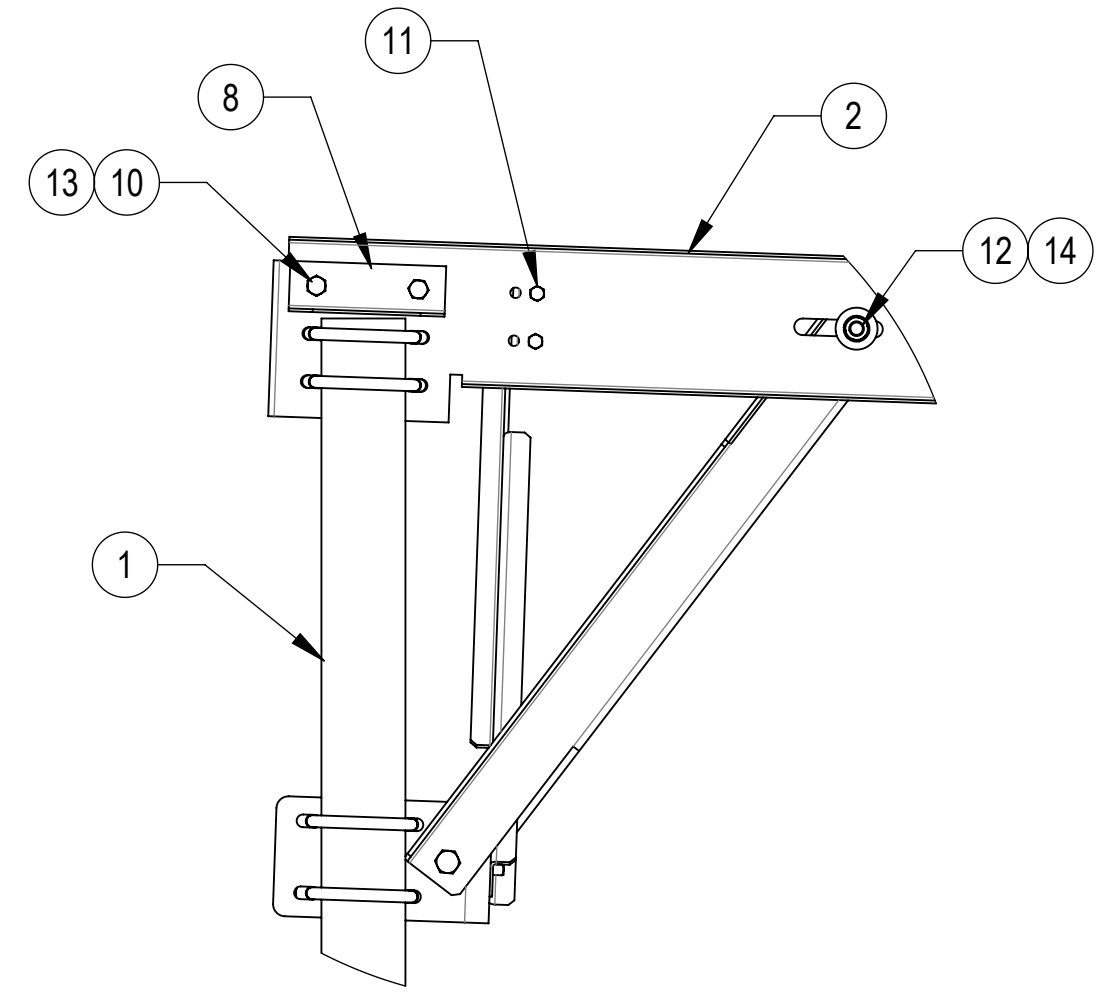
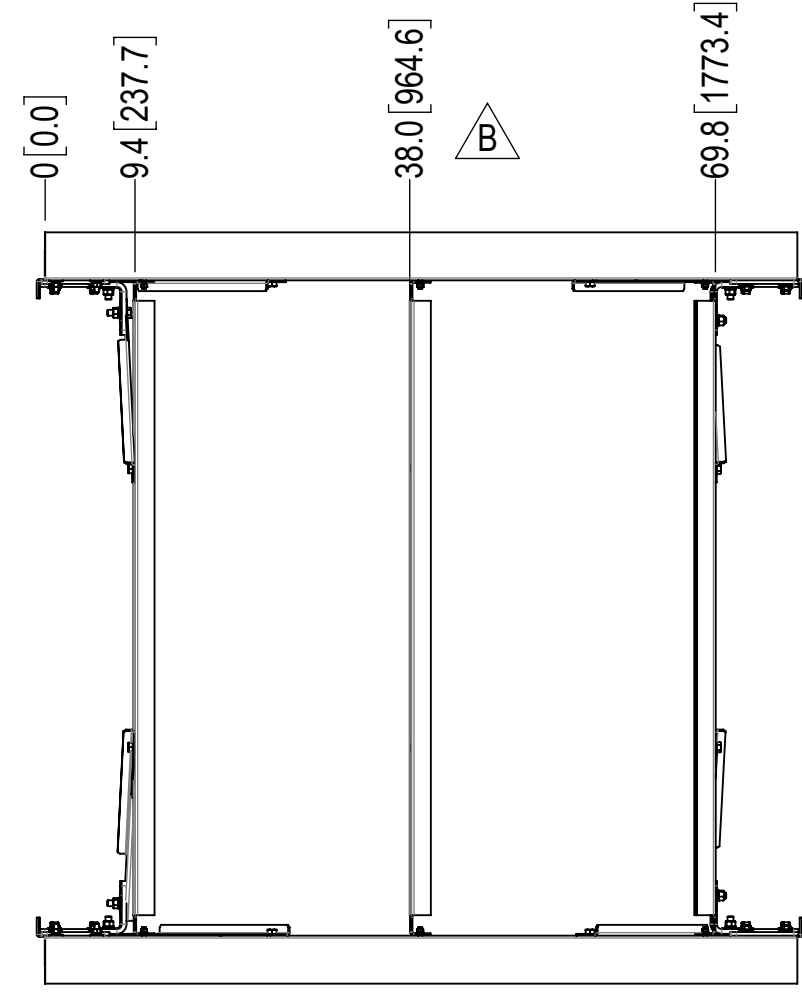
COMMSCOPE, INC. OF NORTH CAROLINA					
TITLE					
06'X06' RAIN CANOPY, 13'-4" BURIAL POST					
SIZE	SCALE	DOCUMENT NO.			
C	1:24	RC-0606-B			
 		DRAWING			SHEET 2 OF 4
		VERSION	STATUS	REVISION	
		01	RE	B	

4

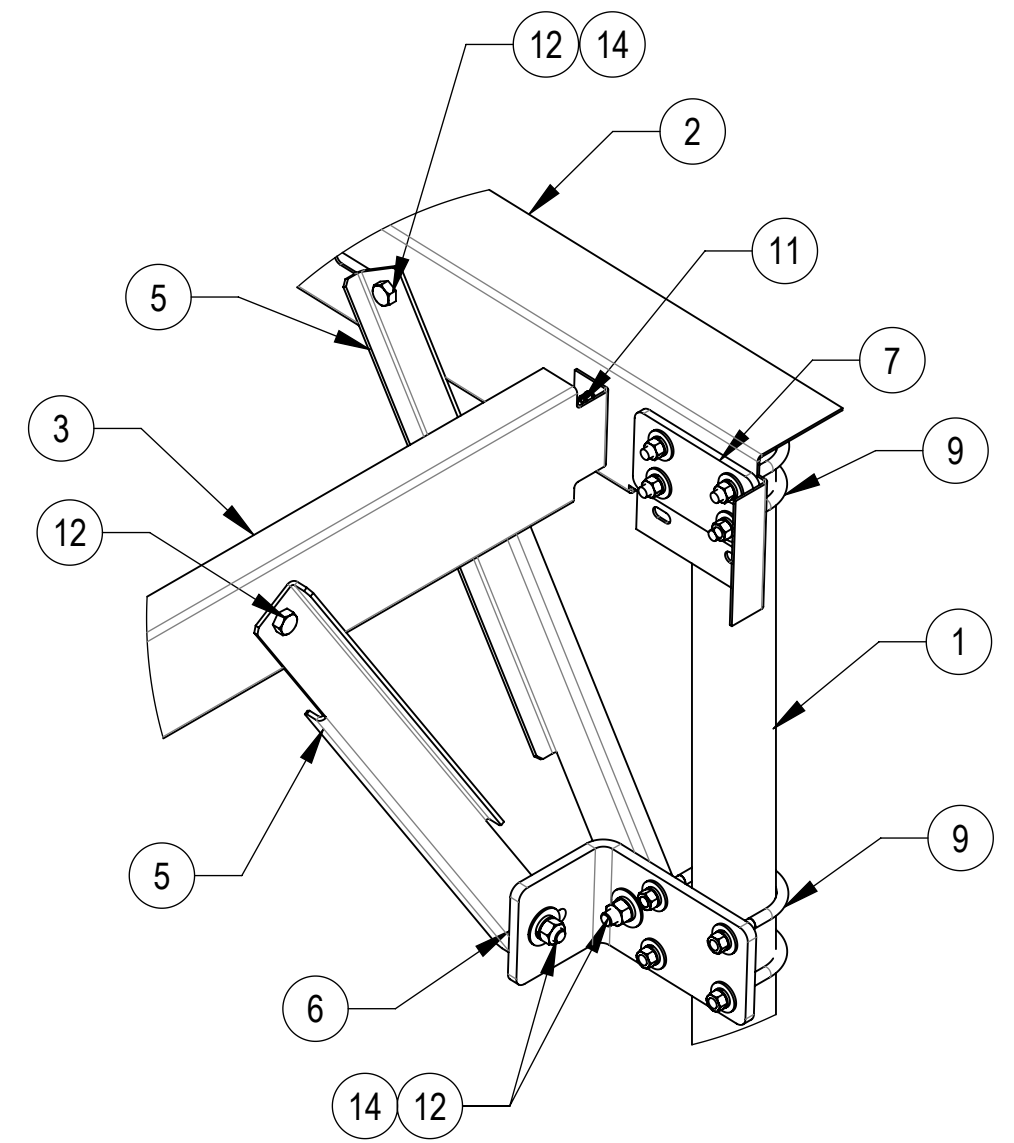
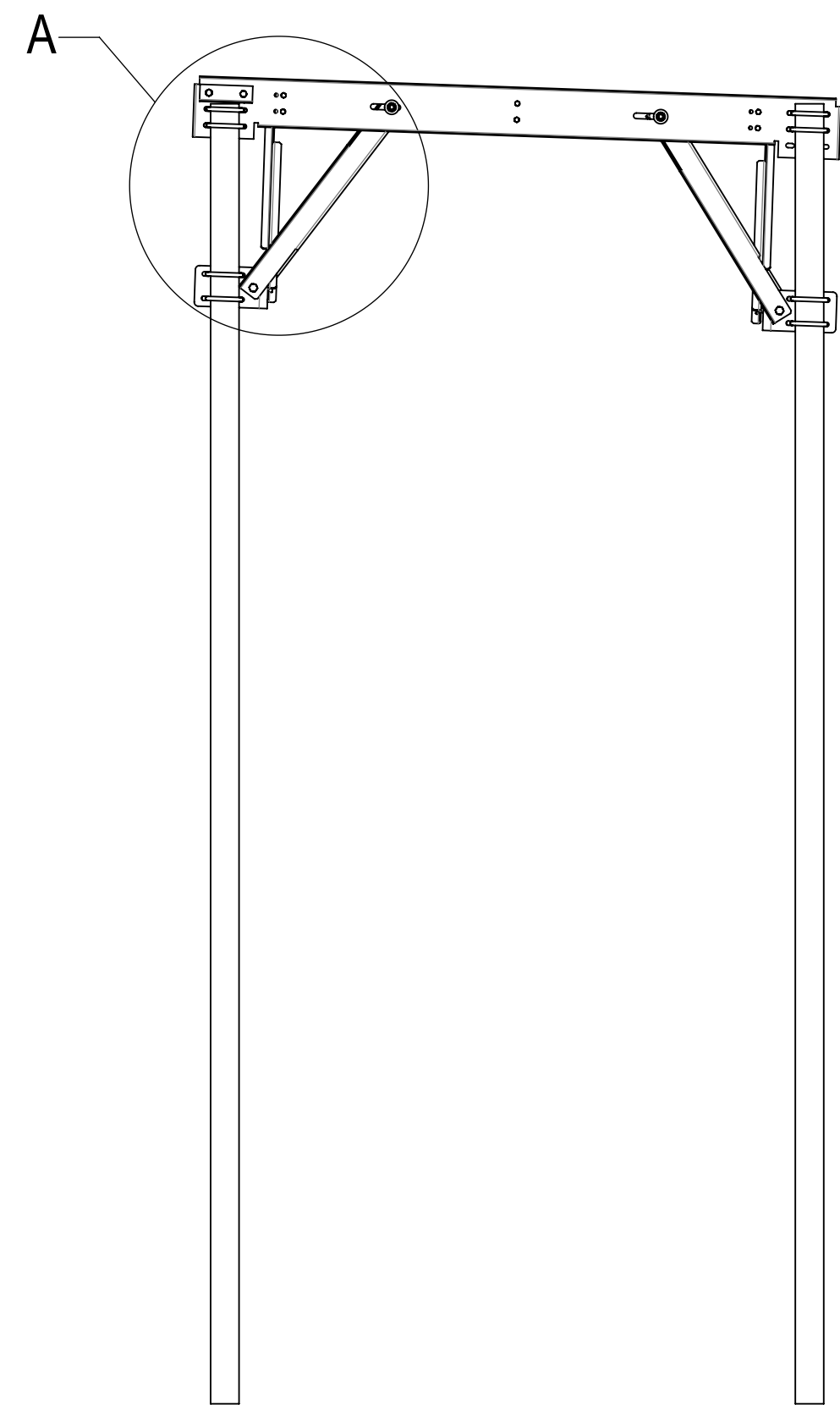
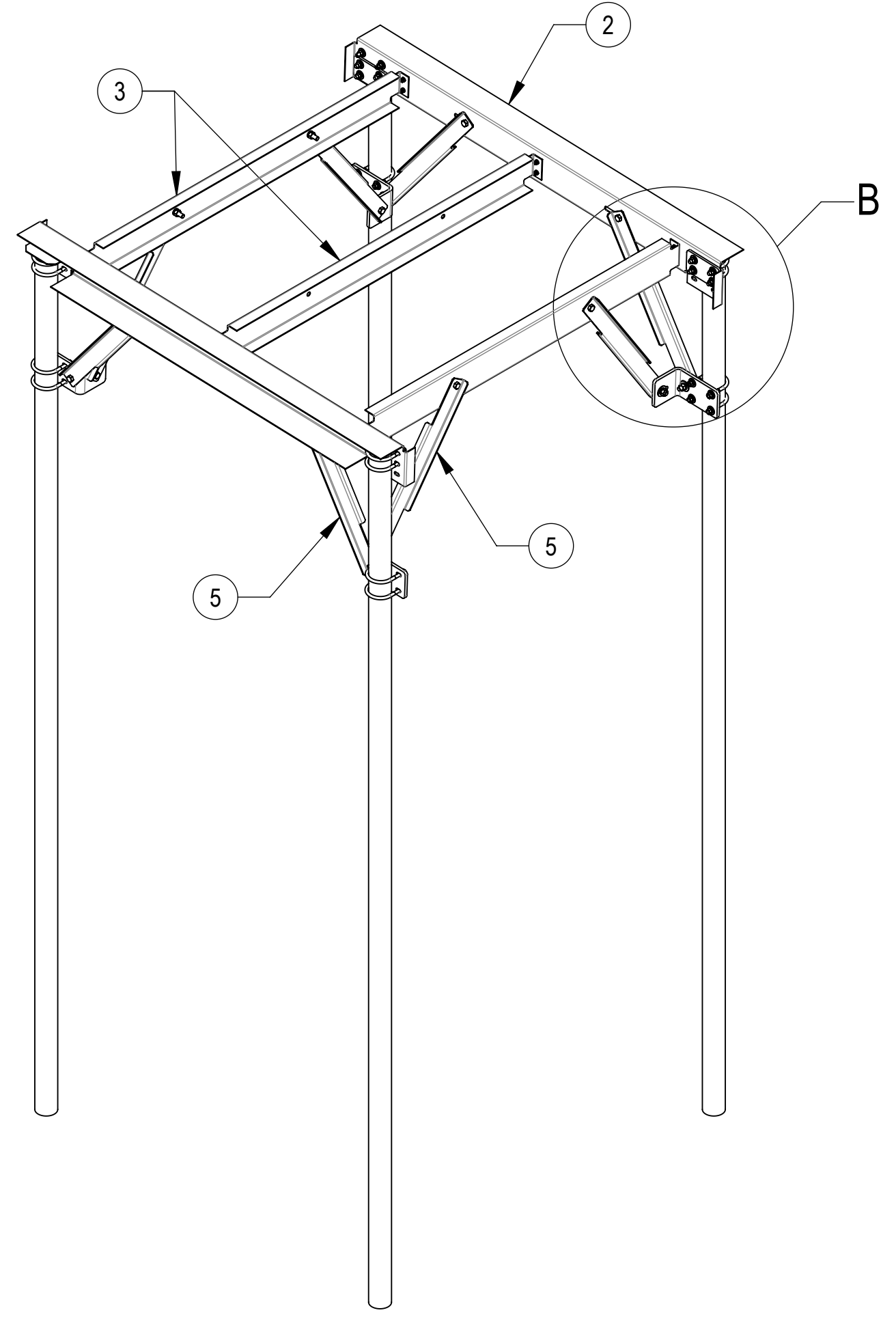
3

2

1

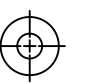
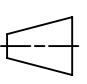


DETAIL A
SCALE 1 : 8



DETAIL B
SCALE 1 : 8

HIDE ROOF DECKING FOR CLARITY

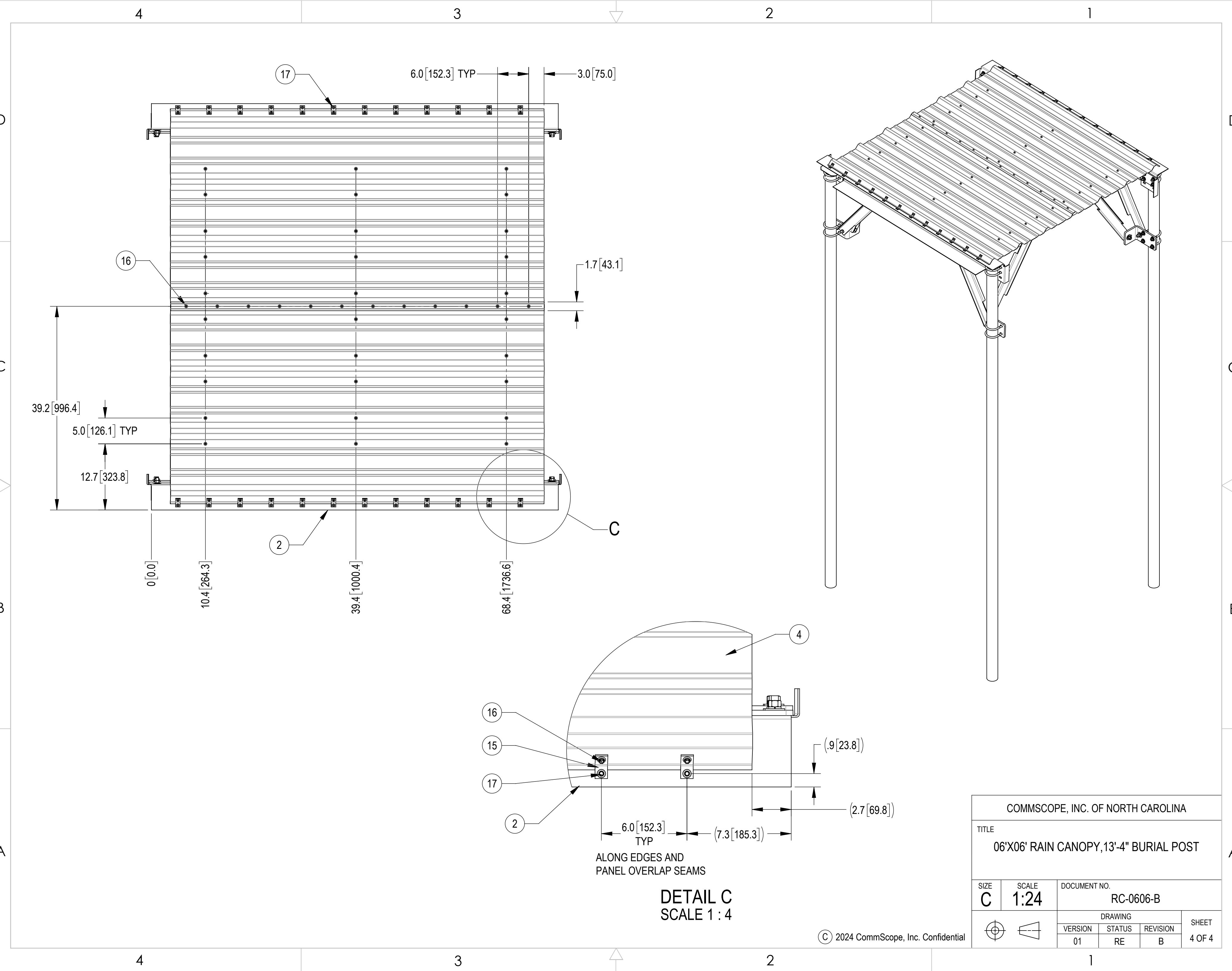
COMMScope, INC. OF NORTH CAROLINA				
TITLE 06'X06' RAIN CANOPY, 13'-4" BURIAL POST				
SIZE C	SCALE 1:24	DOCUMENT NO. RC-0606-B		
 		DRAWING		
		VERSION 01	STATUS RE	REVISION B
				SHEET 3 OF 4

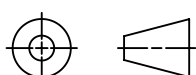
4

3

2

1



COMMSCOPE, INC. OF NORTH CAROLINA				
TITLE 06'X06' RAIN CANOPY,13'-4" BURIAL POST				
SIZE C	SCALE 1:24	DOCUMENT NO. RC-0606-B		
		DRAWING		SHEET 4 OF 4
		VERSION	STATUS	
		01	RE	B