

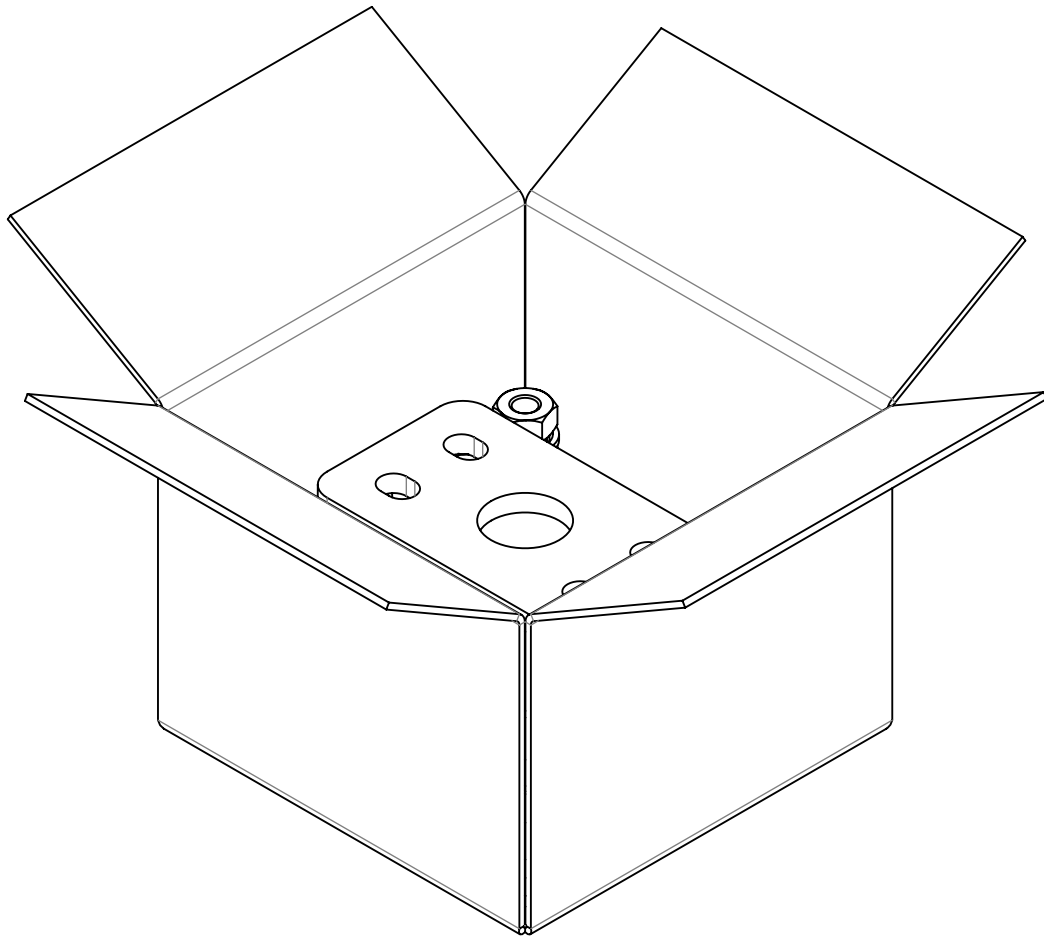
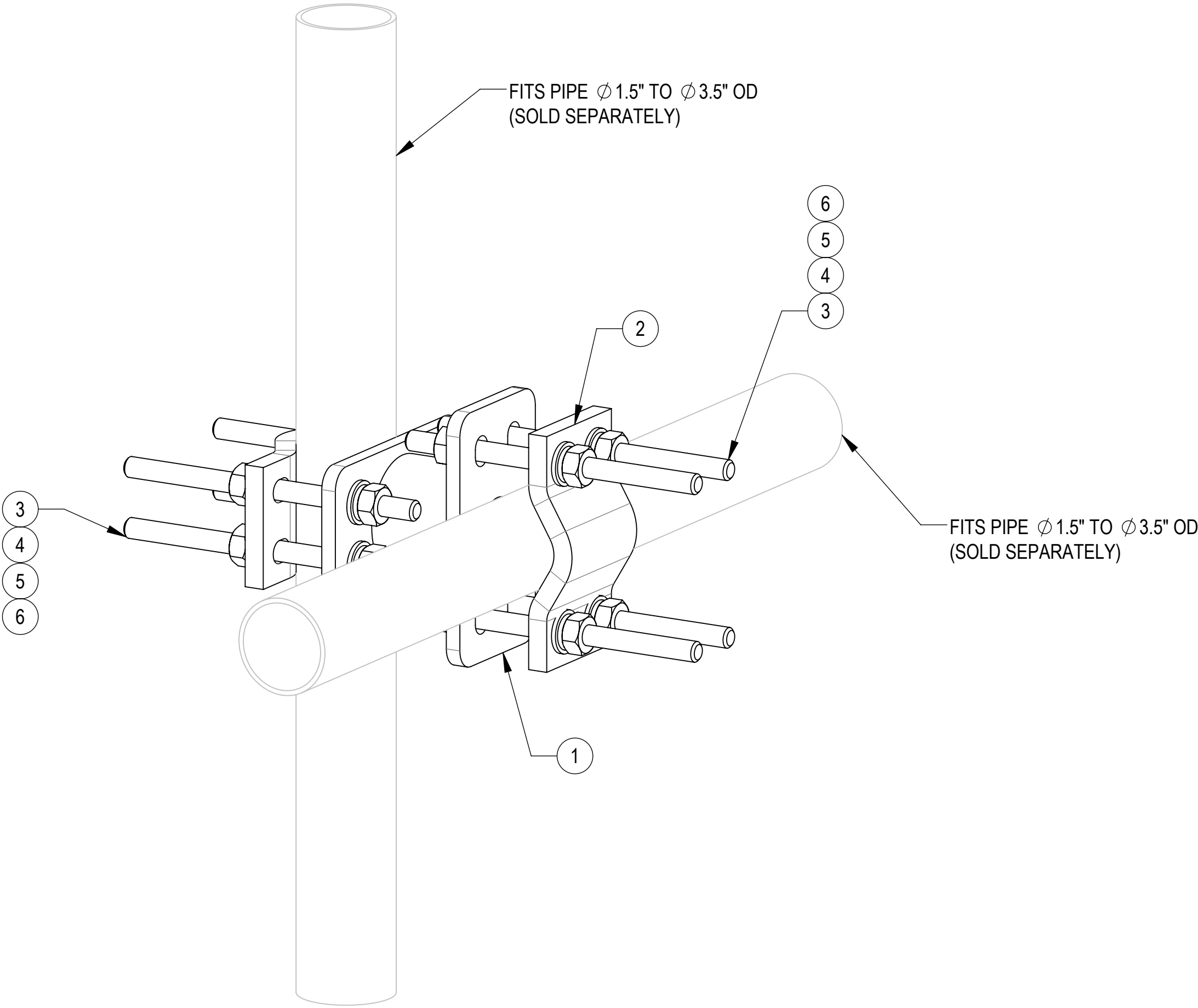
- 1.0 GENERAL NOTES
- 1.1 ALL METRIC DIMENSIONS ARE IN BRACKETS [X. X]

1.2 FOR PATENT INFO: <https://www.adwpat.com>
- 2.0 DESIGN NOTES
- 2.1 ANY HAZARDS OR OBSTRUCTIONS TO THE CLIMBING FACILITY AND SAFETY CLIMB MUST BE IDENTIFIED PRIOR TO INSTALLING THE APPURTENANCE. ADDITIONAL PRODUCTS MAY BE REQUIRED TO MAINTAIN THE INTEGRITY OF THE SAFETY CLIMB. DURING INSTALLATION, TEMPORARY AND/OR PERMANENT PRECAUTIONARY MEASURES SHOULD BE TAKEN TO PRESERVE THE CLIMBING FACILITY AND/OR SAFETY CLIMB.
- 3.0 MANUFACTURING/SPECIAL REQUIREMENTS
- 3.1 TIGHTEN ALL BOLTS SECURING FLAT PLATES BY THE TURN-OF-NUT METHOD. TIGHTEN ALL U-BOLTS USING TURN-OF-NUT METHOD WITH ATTENTION TO LEAVE EQUAL DISTANCE AND EQUAL FORCE ON EACH LEG OF THE U-BOLT.
- 4.0 TEST
- 5.0 PACKAGING
- 5.1 PACKAGING SHALL MEET ANDREW REQUIREMENTS PER DOCUMENT IS-PL-3005

5.2 PRINTED DOCUMENT TO BE PLACED INSIDE POLYBAG AND THEN IN SHIPPING CONTAINER

5.3 EXTRA HARDWARE MAY BE SUPPLIED, BAGGED AND SHIPPED

REVISIONS			
REV.	DESCRIPTION	DATE	APPROVED
A	INITIAL RELEASE	YX1027 16APR25	YZ1080 50102475AMO
B	SCP1001D (ITEM2) & QTY 2 WAS SCP10 & QTY 4; UPDATED PACKAGING VIEW	YX1027 28MAY25	YZ1080 50103111AMO





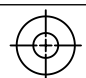
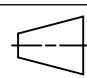
PACKAGING

COMPONENT PART NUMBERS PROVIDED FOR ASSEMBLY PURPOSES;
INDIVIDUAL COMPONENTS MAY BE SHIPPED AS PARTS WITHIN AN INCLUDED KIT.

ITEM NO.	PART NUMBER	DESCRIPTION	QTY.	WEIGHT	NOE NO.
1	860678540-0301-00	3" STANDOFF CROSSOVER WELDMENT	1	10.73 LBS	
2	SCP1001D	1.5" - 3.5" O.D. Double Clamp Half (BLACK)	2	2.40 LBS	
3	MT-379-8	1/2" X 8" GALV THREADED ROD	8	0.44 LBS	
4	GWFO4A	1/2" GALV FLAT WASHER (A325)	16	0.02 LBS	
5	GWL-04	1/2" GALV LOCK WASHER	16	0.01 LBS	
6	GN-04A	1/2" GALV HEX NUT (A194 2H)	16	0.07 LBS	

DENSITY		lbs/in³
MASS	26.56	lbs
VOLUME	93.69	in³
SURFACE AREA	1118.25	in²
HEIGHT	6.24"	
LENGTH	10.24"	
WIDTH	8.34"	

Confidential

<div>ANDREW® an Amphenol company</div>										
TOLERANCES						SAP MATERIAL MASTER				
1 PLACE .X[X] ± 0.2[6.3]			3 PLACE .XXX[X] ± 0.060[1.5]			860678540-03				
2 PLACE .XX[X] ± 0.12[3.0]			ANGLES ± 2°							
FINISH					MATERIAL					
UNLESS OTHERWISE SPECIFIED DIMENSIONS ARE IN INCHES INTERPRET PER ANSI Y 14.5M-1994		NAME	DATE	TITLE 3" STANDOFF CROSSOVER WELDMENT, KIT						
	CE	YX1027	16APR25							
	RW	YX1027	06/17/2025							
										
	AD	YZ1080	06/19/2025	SCALE 1:4		DOCUMENT NO. 860678540-03				
	RE	YMENG	06/20/2025							
	ECN 50103111AMO									
SIZE		Auth Group	INSL	MODEL			DRAWING			SHEET 1 OF 1
C			01	VERSION	STATUS	REVISION	VERSION	STATUS	REVISION	
				01	RE	B	01	RE	B	