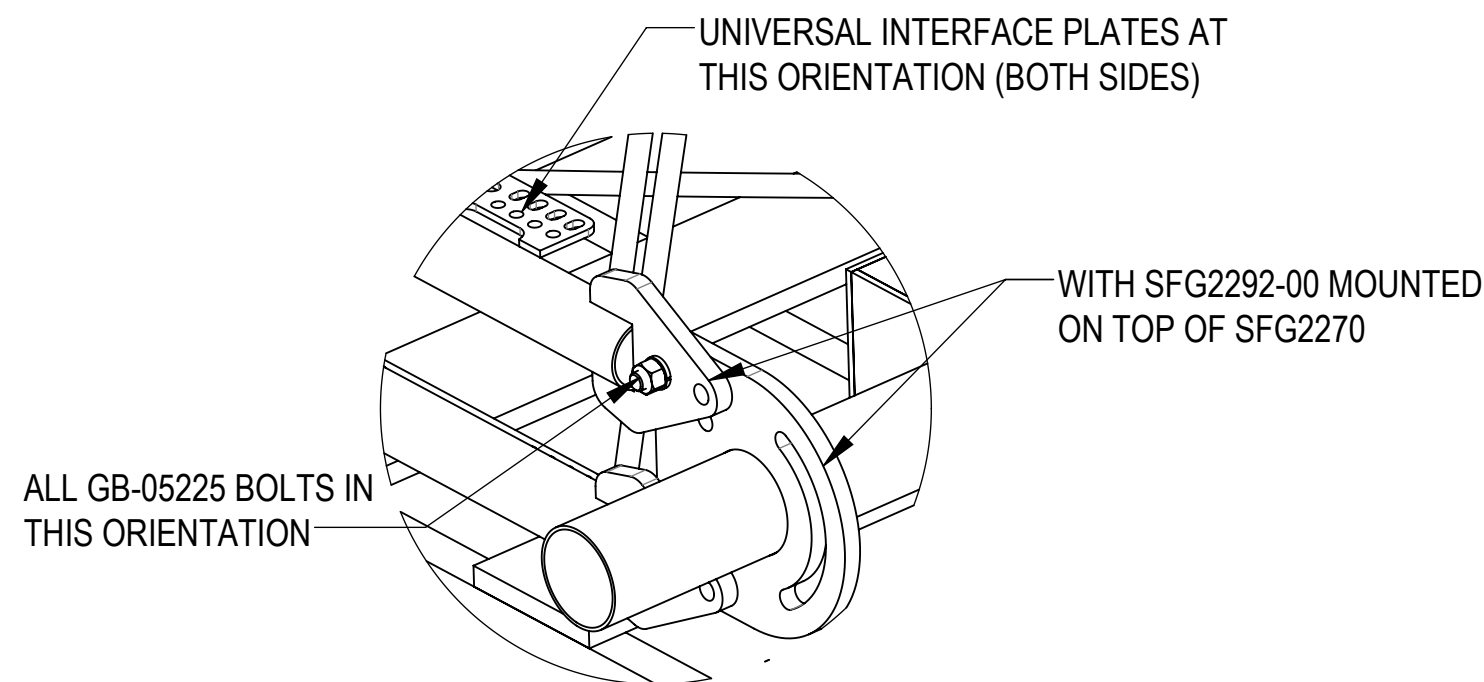
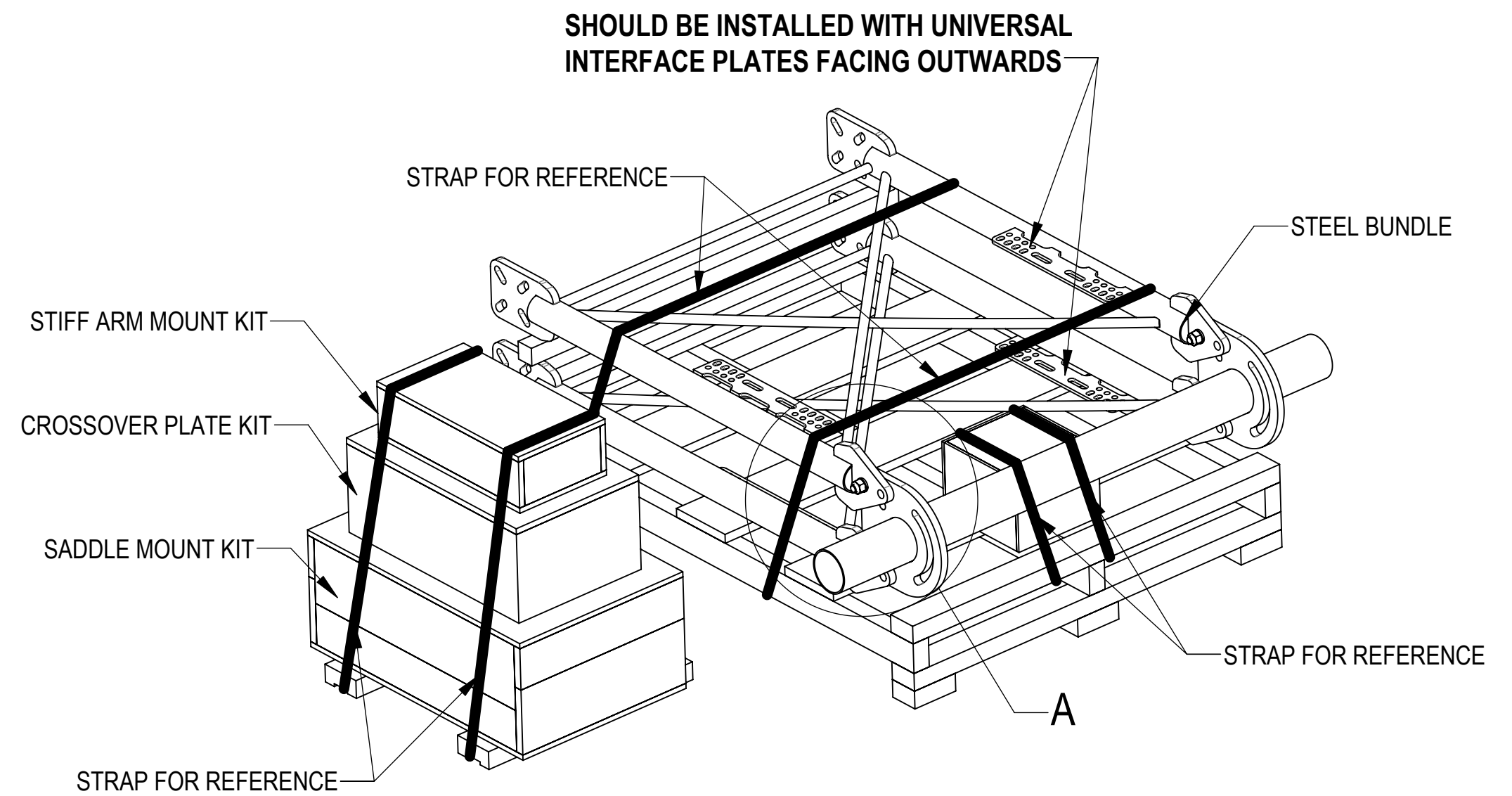
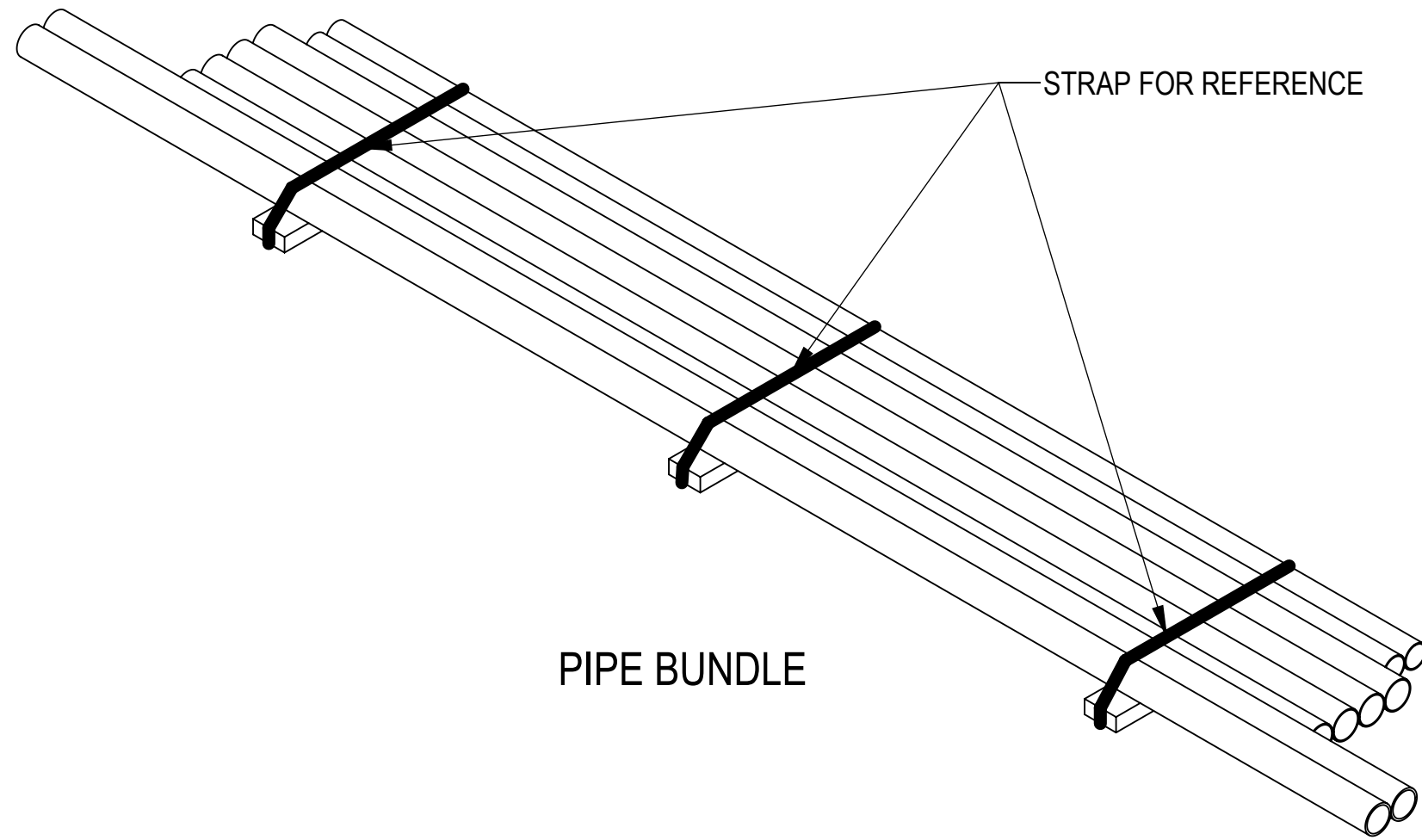


- 1.0 GENERAL NOTES  
 1.1 ALL METRIC DIMENSIONS ARE IN BRACKETS [X.XX]  
 1.2 FOR PATENT INFO: <https://www.adwpat.com>
- 2.0 DESIGN NOTES  
 2.1 ANY HAZARDS OR OBSTRUCTIONS TO THE CLIMBING FACILITY AND SAFETY CLIMB MUST BE IDENTIFIED PRIOR TO INSTALLING THE APPURTENANCE. ADDITIONAL PRODUCTS MAY BE REQUIRED TO MAINTAIN THE INTEGRITY OF THE SAFETY CLIMB. DURING INSTALLATION, TEMPORARY AND/OR PERMANENT PRECAUTIONARY MEASURES SHOULD BE TAKEN TO PRESERVE THE CLIMBING FACILITY AND/OR SAFETY CLIMB.  
 2.2 UP TO 5.0° TAPER AVAILABLE ON MODELS THAT SUPPORT ADJUSTMENT.
- 3.0 MANUFACTURING/SPECIAL REQUIREMENTS  
 3.1 TIGHTEN ALL BOLTS SECURING FLAT PLATES BY THE TURN-OF-NUT METHOD. TIGHTEN ALL U-BOLTS USING TURN-OF-NUT METHOD WITH ATTENTION TO LEAVE EQUAL DISTANCE AND EQUAL FORCE ON EACH LEG OF THE U-BOLT.
- 4.0 TEST
- 5.0 PACKAGING  
 5.1 PACKAGING SHALL MEET ANDREW REQUIREMENTS PER DOCUMENT IS-PL-3005.  
 5.2 PRINTED DOCUMENT TO BE PLACED INSIDE POLYBAG AND THEN IN SHIPPING CONTAINER.  
 5.3 EXTRA HARDWARE MAY BE SUPPLIED, BAGGED AND SHIPPED.

REVISIONS			
REV.	DESCRIPTION	DATE	APPROVED
M	SFG2292-00 (ITEM 2) WAS SFG2278; UPDATED TIE BACK PIPE TO 2.375" EXCEPT -H10/-WLL; ADDED SHEET 5 V-ARM VIEW; UPDATED TABLE 1 WEIGHT, EPA & INCLUDED PARTS	JL1183 25NOV24	YZ1080 40209215CMO
N	SHEET 4&8: ADDED AZIMUTH ADJUSTMENT RANGE VIEW & NOTE	JL1183 10JAN25	BA1025 40212102CMO
P	SHEET 2: ADDED SFG22HDX-10-3-120 MID IN THE TABLE 1	YC1059 10APR25	XK1001 50102271AMO
R	SHEET 2: ADDED SFG22HDX-10-4-126 MID IN THE TABLE 1	YX1027 26JUN25	CB1094 50103624AMO
T	SHEET 2: ADDED SFG22HDX-10-4-120 MID IN THE TABLE 1	YX1027 17JUL25	CB1094 50103974AMO



DENSITY	lbs/in <sup>3</sup>
MASS	lbs
VOLUME	in <sup>3</sup>
SURFACE AREA	in <sup>2</sup>
HEIGHT	
LENGTH	
WIDTH	

**ANDREW**® an Amphenol company

TOLERANCES  
 0 PLACE X[X] ± 0.25[6.3]    2 PLACE .XX[X] ± 0.06[1.5]  
 1 PLACE .X[X] ± 0.12[3.0]    ANGLES ± 2°

SAP MATERIAL MASTER  
**SEE TABLE 1**

FINISH    MATERIAL

UNLESS OTHERWISE SPECIFIED DIMENSIONS ARE IN INCHES INTERPRET PER ANSI Y 14.5M-1994	NAME	DATE	TITLE
	CE RJC	01/11/2019	<b>SFG22HDX SECTOR FRAME SERIES</b>
	RW YX1027	07/17/2025	
	AD CB1094	07/22/2025	
	RE YMENG	07/22/2025	
ECN 50103974AMO			

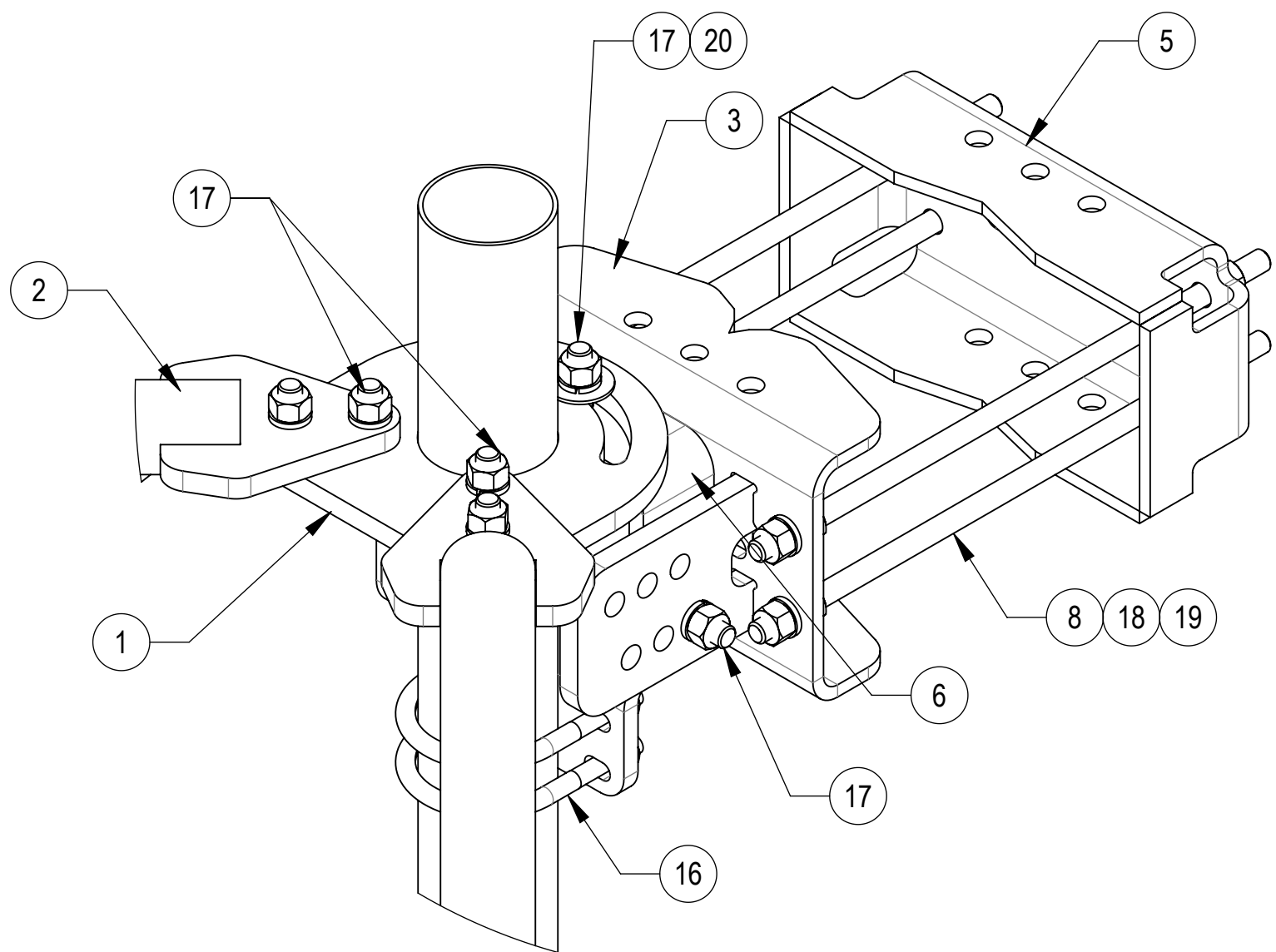
SCALE **1:10**    DOCUMENT NO. **SFG22HDX**

SIZE	Auth Group	INSL	MODEL	DRAWING			SHEET		
<b>C</b>			VERSION	STATUS	REVISION	VERSION	STATUS	REVISION	1 OF 12
			02	RE	<b>C</b>	21	RE	<b>T</b>	

Confidential





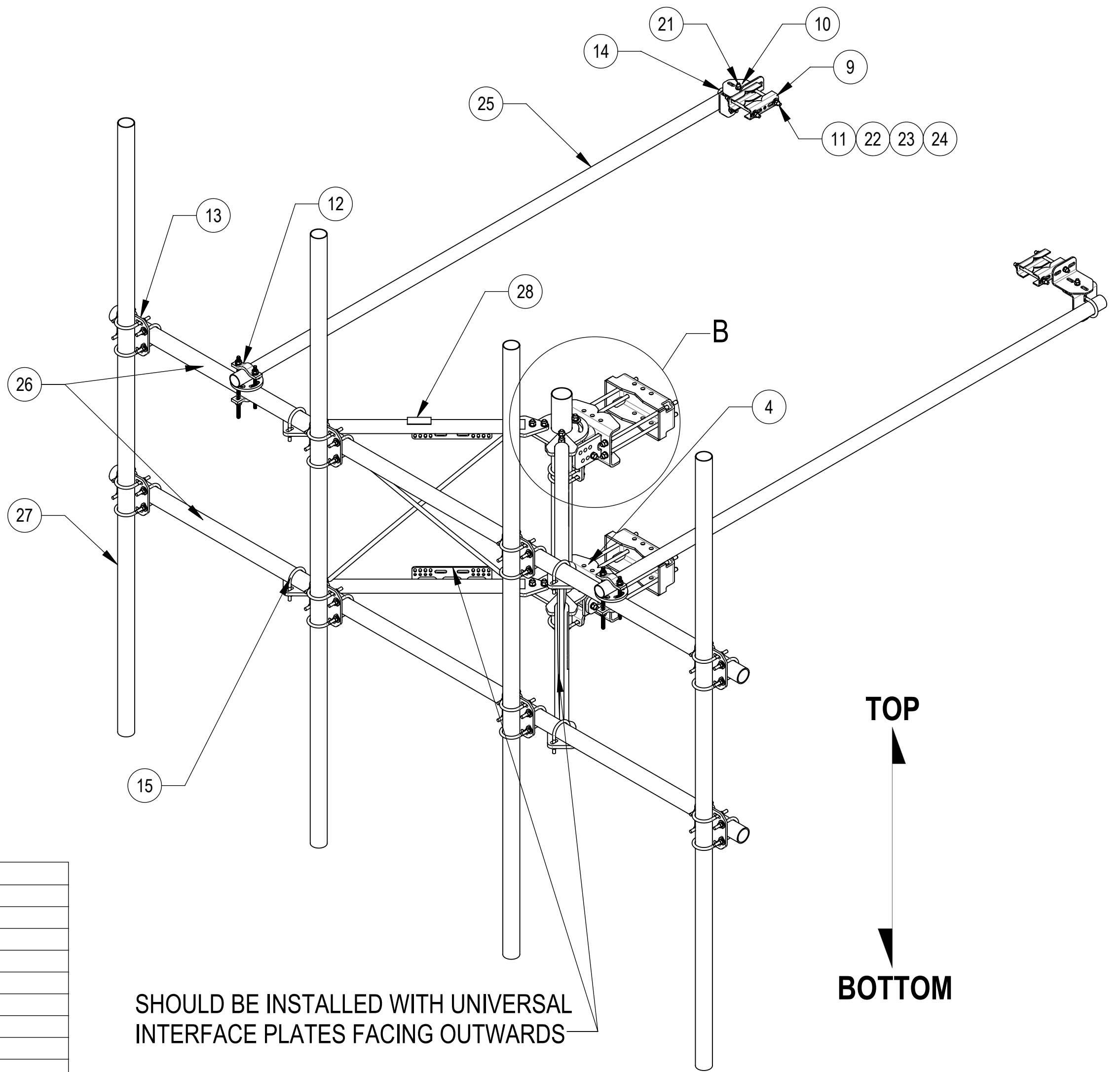


**DETAIL B**  
SCALE 1 : 4

**SFG22HDX-12-4-126 SHOWN FOR REFERENCE**  
(NOT ALL CONFIGURATIONS INCLUDE ALL ITEMS, SEE NOTES IN TABLE)

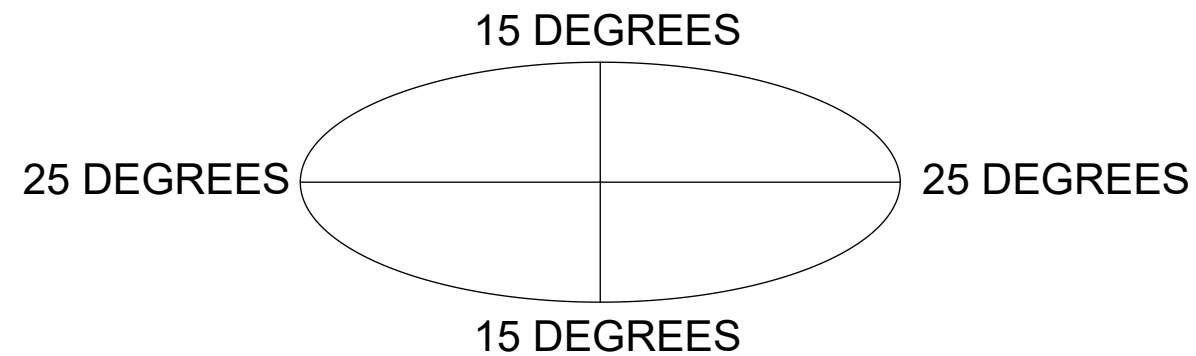
**COMPONENT PART NUMBERS PROVIDED FOR ASSEMBLY PURPOSES;  
INDIVIDUAL COMPONENTS MAY BE SHIPPED AS PARTS WITHIN AN INCLUDED KIT.**

ITEM	PART NO.	DESCRIPTION	QTY.	WEIGHT	NOTE NO.
1	SFG2270	BACK VERTICAL ARM MOUNT	1	36.96 LBS	
2	SFG2292-00	WELDMNT, V-ARM, SECTOR FRAME 22	2	49.69 LBS	
3	SFG2380	WELDMNT, HD, TOP TAPER BRACKET	1	22.78 LBS	
4	SFG2381	WELDMNT, HD, LOWER TOWER LEG BRACKET	1	17.42 LBS	
5	SFG2289	G2 RRU BACK CLAMP, HD	2	18.65 LBS	
6	SFG2386	WELDMNT, SFG2 AZIMUTH BRACKET	1	10.07 LBS	
7	SFG2397-00	WELDMNT, G23 AZIMUTH BRACKET	1	7.94 LBS	
8	MT-382-18	5/8" X 18" THREADED ROD	8	1.43 LBS	
9	SAB01	FORMED CLAMP	4	1.35 LBS	
10	XAU01	ANGLE, CROSSOVER, 1.9-3.5" X 1.9-3.5" OD	4	2.98 LBS	
11	MT-379-8	1/2" X 8" GALV THREADED ROD	4	0.45 LBS	
12	XP-R	CROSSOVER PLATE, ROUND, UP TO 3.5" OD	2	6.20 LBS	
13	XP-2525	CROSSOVER PLATE KIT, 2-7/8 OD X 2-7/8 OD	8	8.37 LBS	PART NO. AND QTY SEE INDIVIDUAL DRAWING
14	GUB-4240	1/2" X 2-1/2" X 4" GALV U-BOLT	2	0.56 LBS	PART NO. AND QTY SEE INDIVIDUAL DRAWING
15	GUB-4352	1/2" X 3" X 5-1/4" GALV U-BOLT	4	0.71 LBS	QTY SEE INDIVIDUAL DRAWING
16	GUB-4355	1/2" X 3-5/8" X 5" GALV U-BOLT	3	0.71 LBS	
17	GB-05225	5/8" X 2-1/4" GALV BOLT KIT	14	0.28 LBS	
18	GN-05	5/8" GALV HEX NUT	24	0.08 LBS	
19	GWL-05	5/8" GALV LOCK WASHER	16	0.03 LBS	
20	GWF-05	5/8" GALV FLAT WASHER, 1.7OD	2	0.06 LBS	
21	GB-04145	1/2" X 1-1/2" GALV BOLT KIT	2	0.13 LBS	
22	GN-04	1/2" GALV HEX NUT	10	0.04 LBS	
23	GWL-04	1/2" GALV LOCK WASHER	10	0.01 LBS	
24	GWF-04	1/2" GALV FLAT WASHER	8	0.04 LBS	
25	MT-651-120	PIPE, 2.375"OD X 120"	2	29.07 LBS	PART NO. SEE INDIVIDUAL DRAWING
26	MT-546-150	PIPE, 2.875"OD X 150"	2	72.67 LBS	PART NO. AND QTY SEE INDIVIDUAL DRAWING
27	MT546126120	PIPE, 2.875"OD X 126"	4	37.21 LBS	PART NO. AND QTY SEE INDIVIDUAL DRAWING
28	SFG2255	LABEL, SFG21HDX	1	0.04 LBS	



SHOULD BE INSTALLED WITH UNIVERSAL  
INTERFACE PLATES FACING OUTWARDS

**ALLOWABLE TIEBACK ANGLE**  
± 15 DEGREES VERTICAL  
± 25 DEGREES HORIZONTAL



TITLE  
**SFG22HDX SECTOR FRAME SERIES**

SIZE **C** SCALE **1:16** DOCUMENT NO. **SFG22HDX**

DRAWING			SHEET 3 OF 12
VERSION	STATUS	REVISION	
21	RE	T	

Confidential

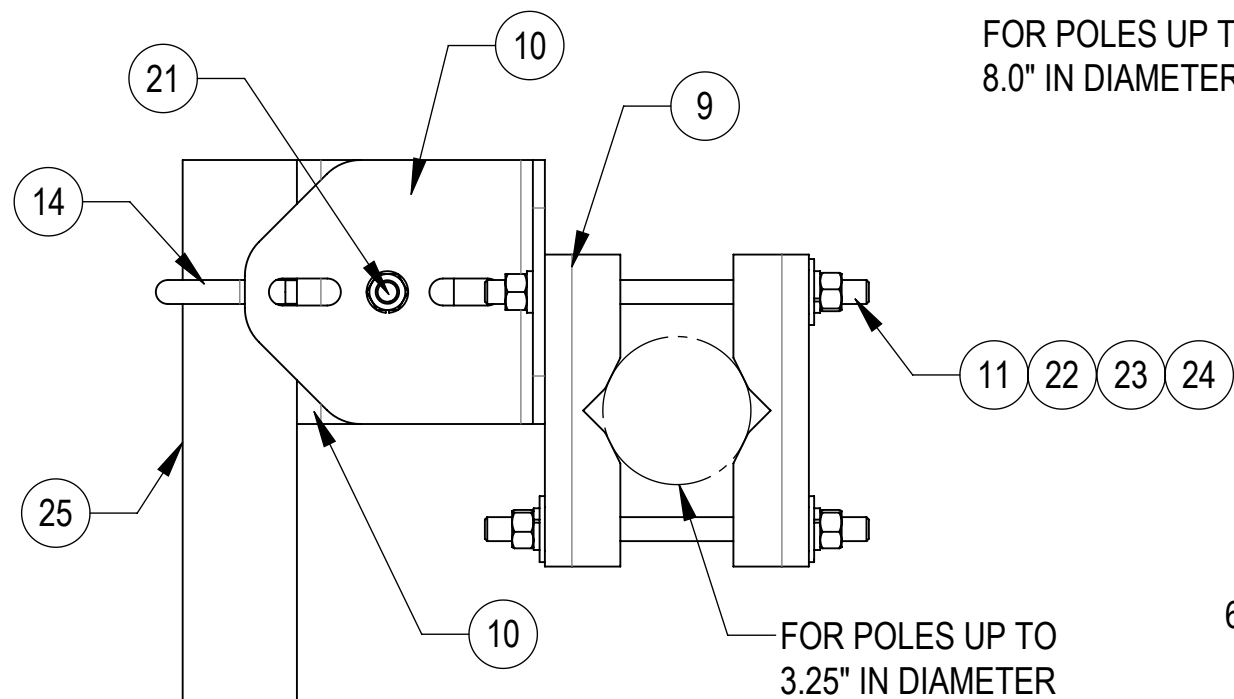
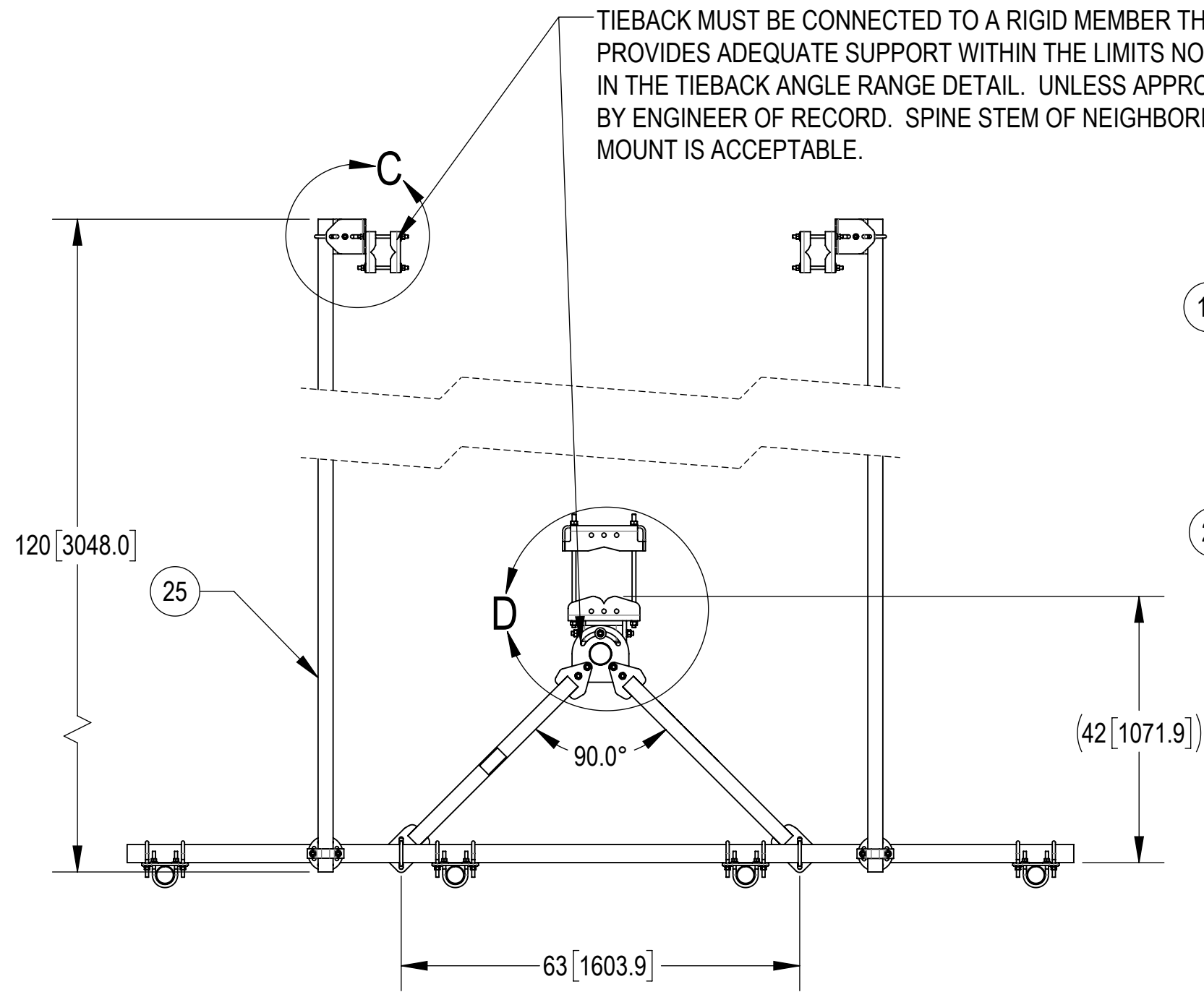
4

3

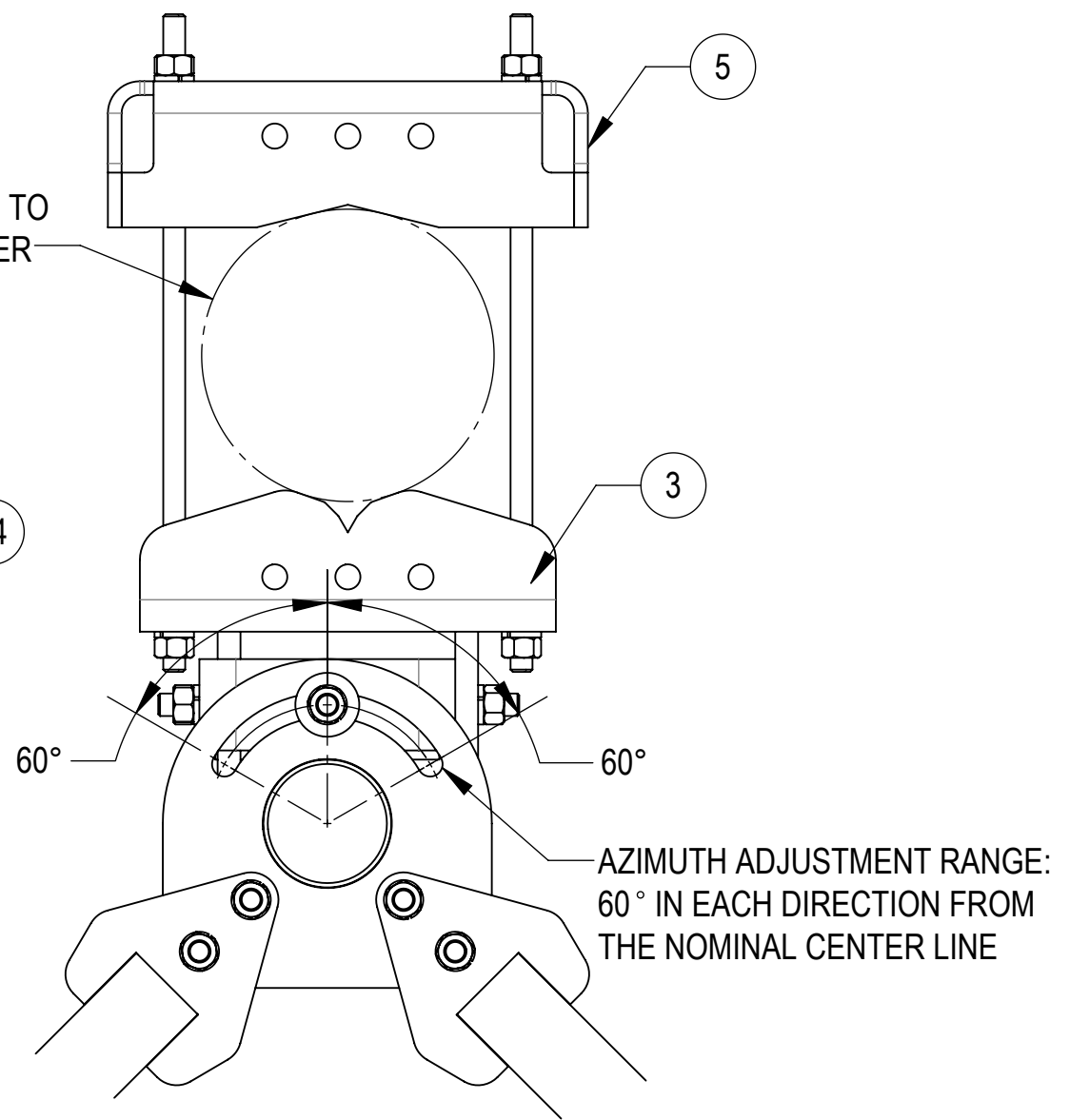
2

1

TIEBACK MUST BE CONNECTED TO A RIGID MEMBER THAT PROVIDES ADEQUATE SUPPORT WITHIN THE LIMITS NOTED IN THE TIEBACK ANGLE RANGE DETAIL. UNLESS APPROVED BY ENGINEER OF RECORD. SPINE STEM OF NEIGHBORING MOUNT IS ACCEPTABLE.



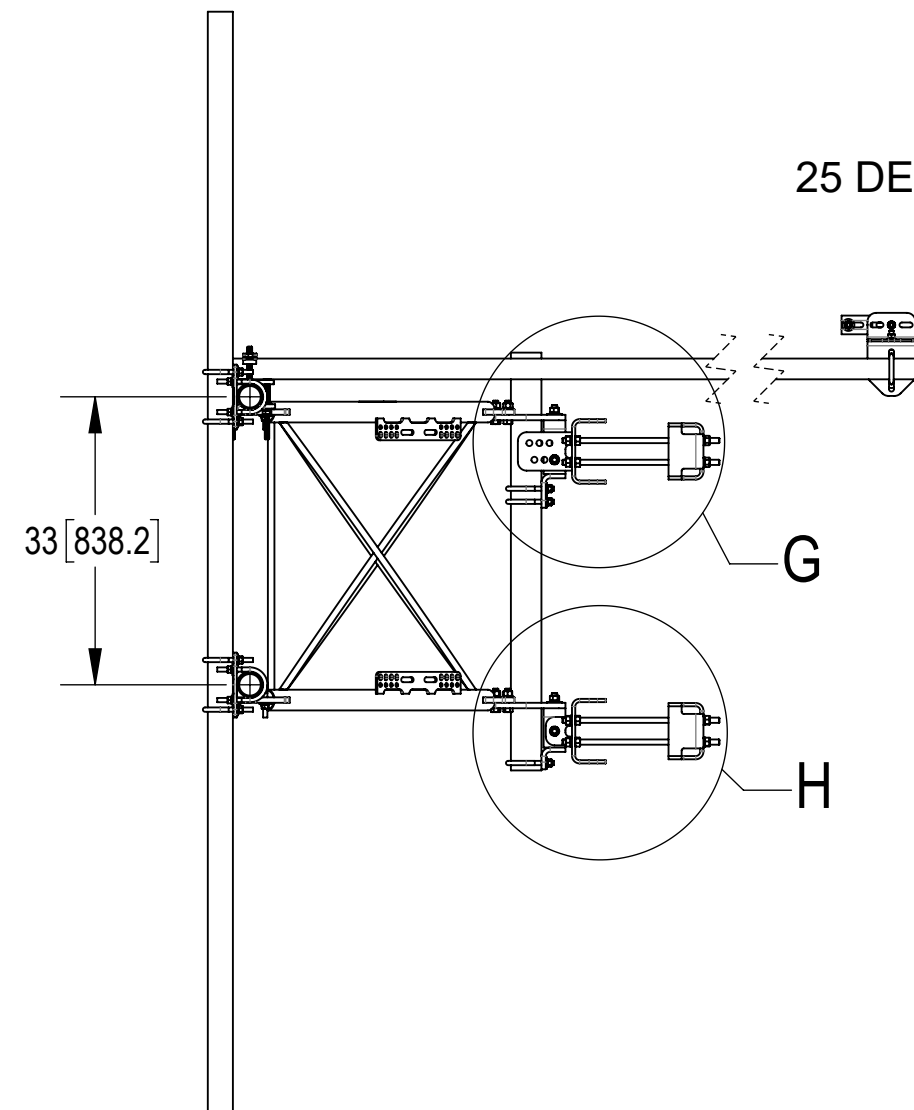
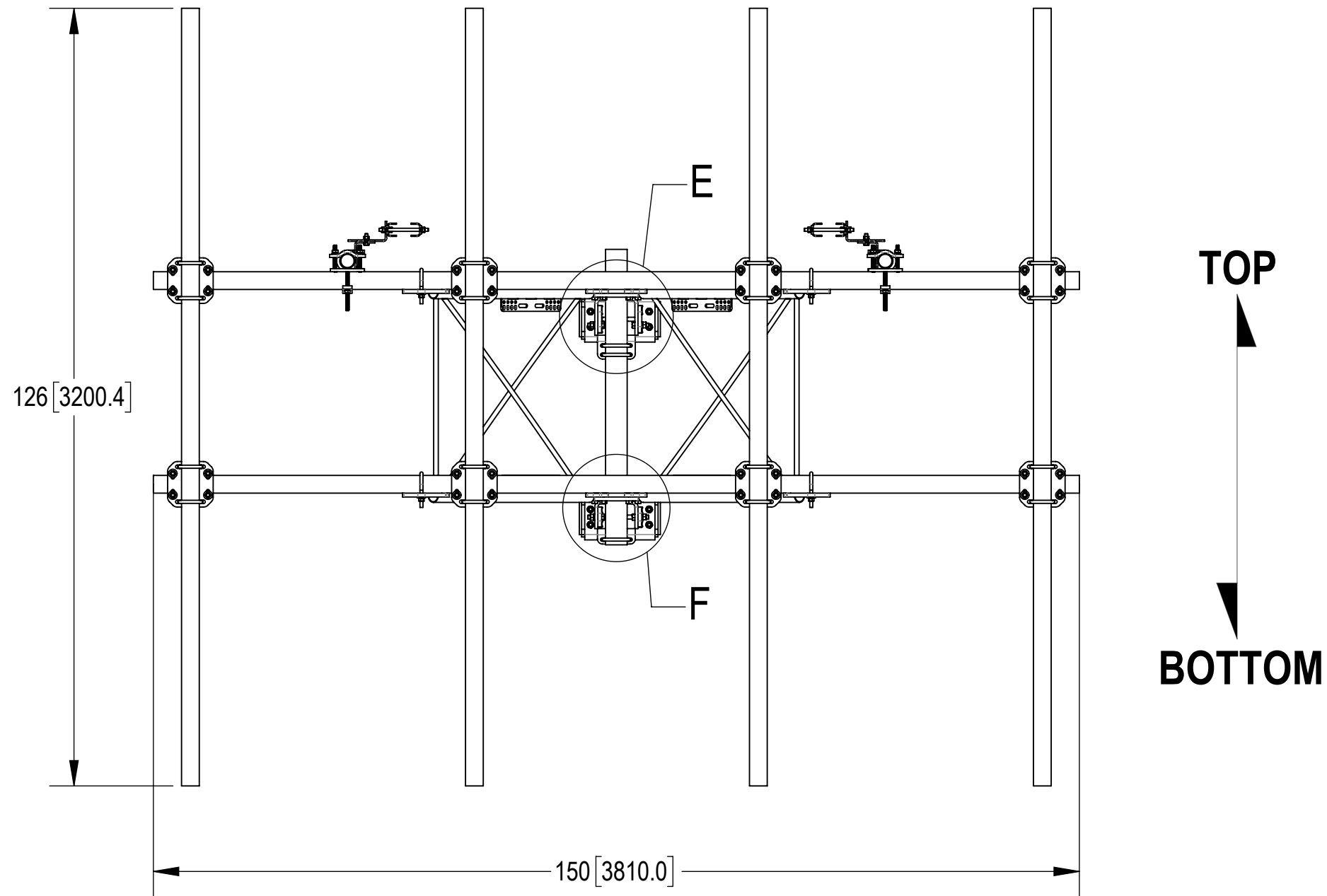
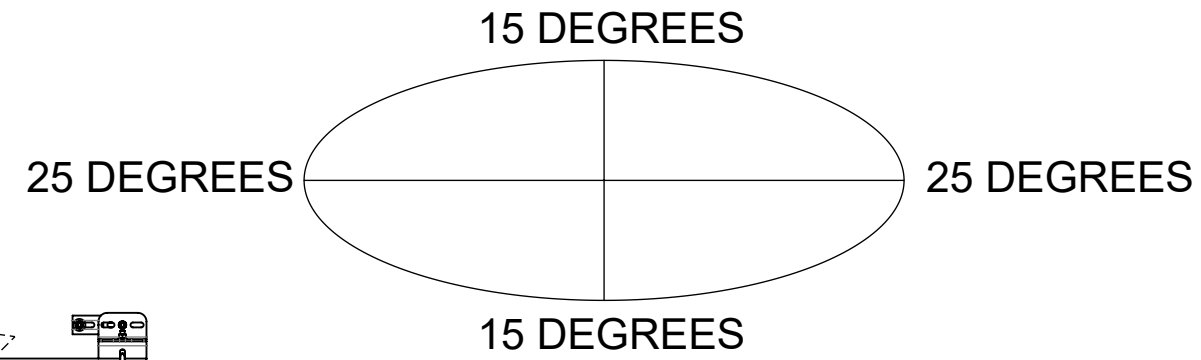
**DETAIL C**  
SCALE 1:4




**DETAIL D**  
SCALE 1:5

**SFG22HDX-12-4-126 SHOWN FOR REFERENCE**  
(NOT ALL CONFIGURATIONS INCLUDE ALL ITEMS, SEE NOTES IN TABLE ON PAGE 3)

**ALLOWABLE TIEBACK ANGLE**  
+15 DEGREES VERTICAL  
±25 DEGREES HORIZONTAL



 <b>ANDREW</b> an Amphenol company				
TITLE SFG22HDX SECTOR FRAME SERIES				
SIZE <b>C</b>	SCALE <b>1:20</b>	DOCUMENT NO. SFG22HDX		
		DRAWING		SHEET
		VERSION	STATUS	REVISION
		21	RE	T
Confidential				4 OF 12

4

3

2

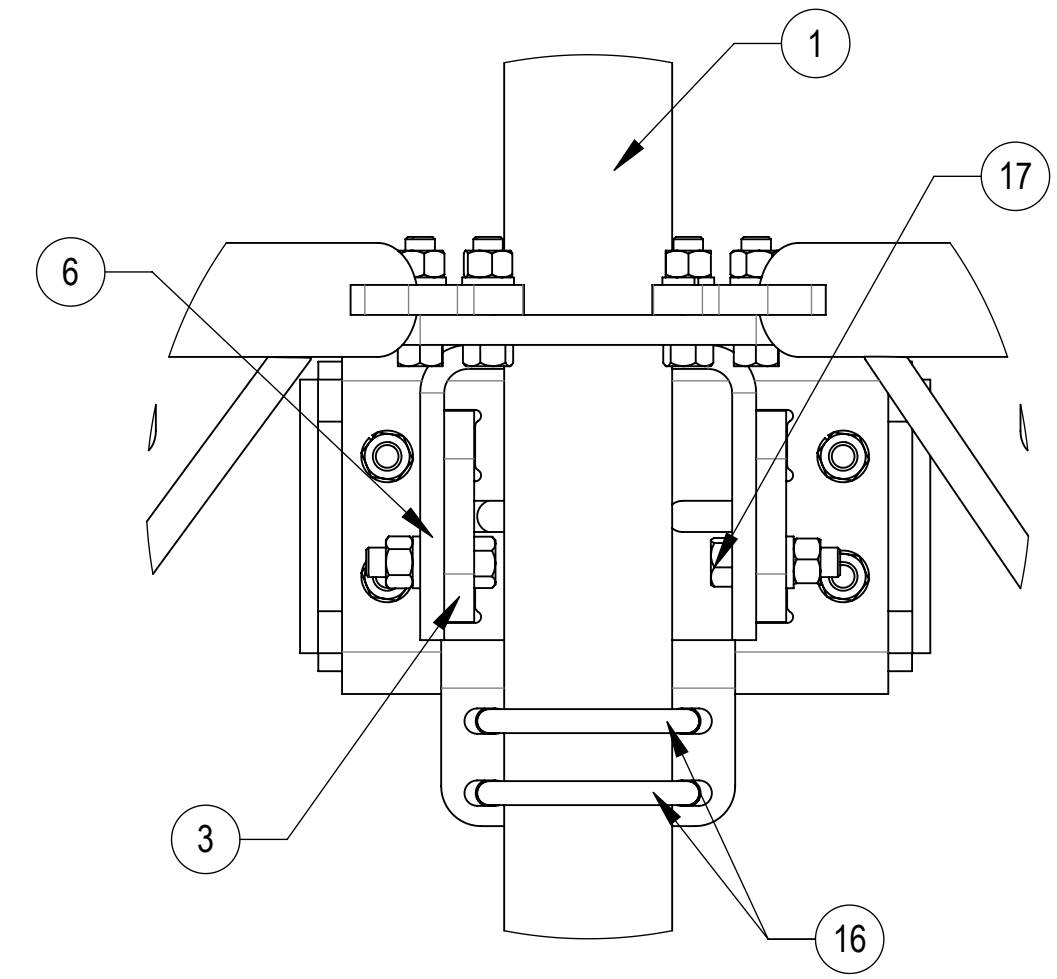
1

4

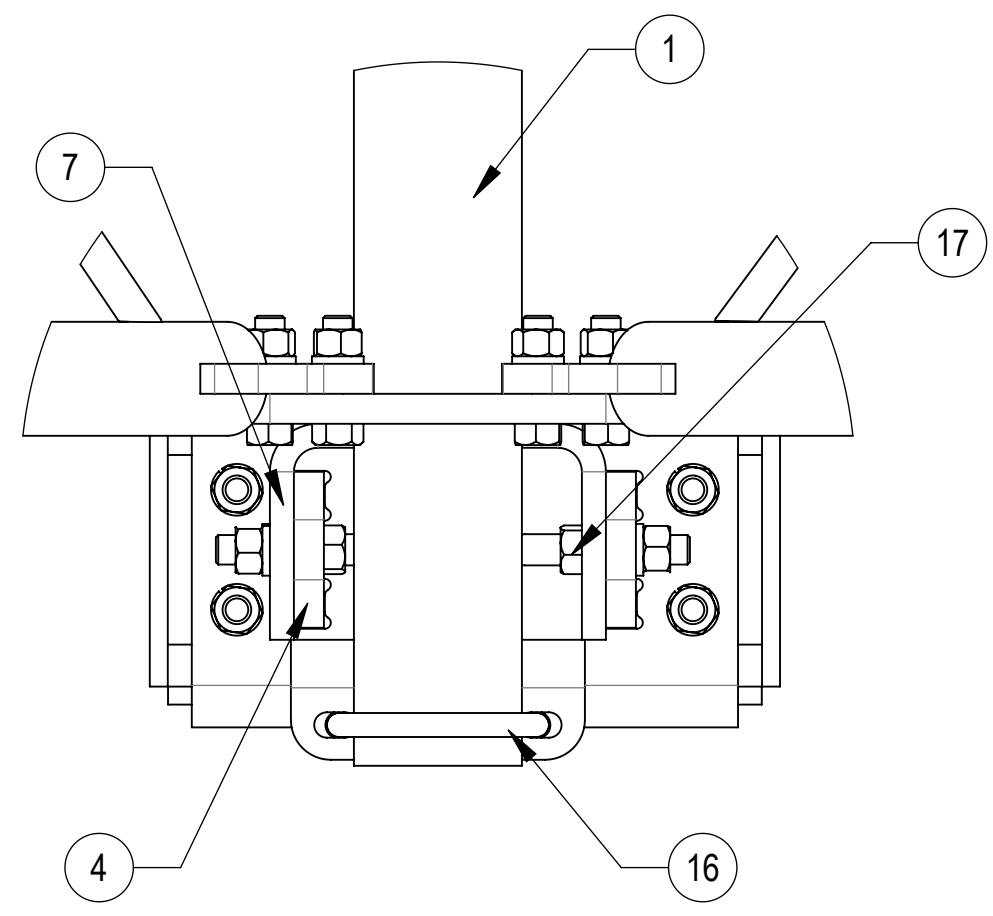
3

2

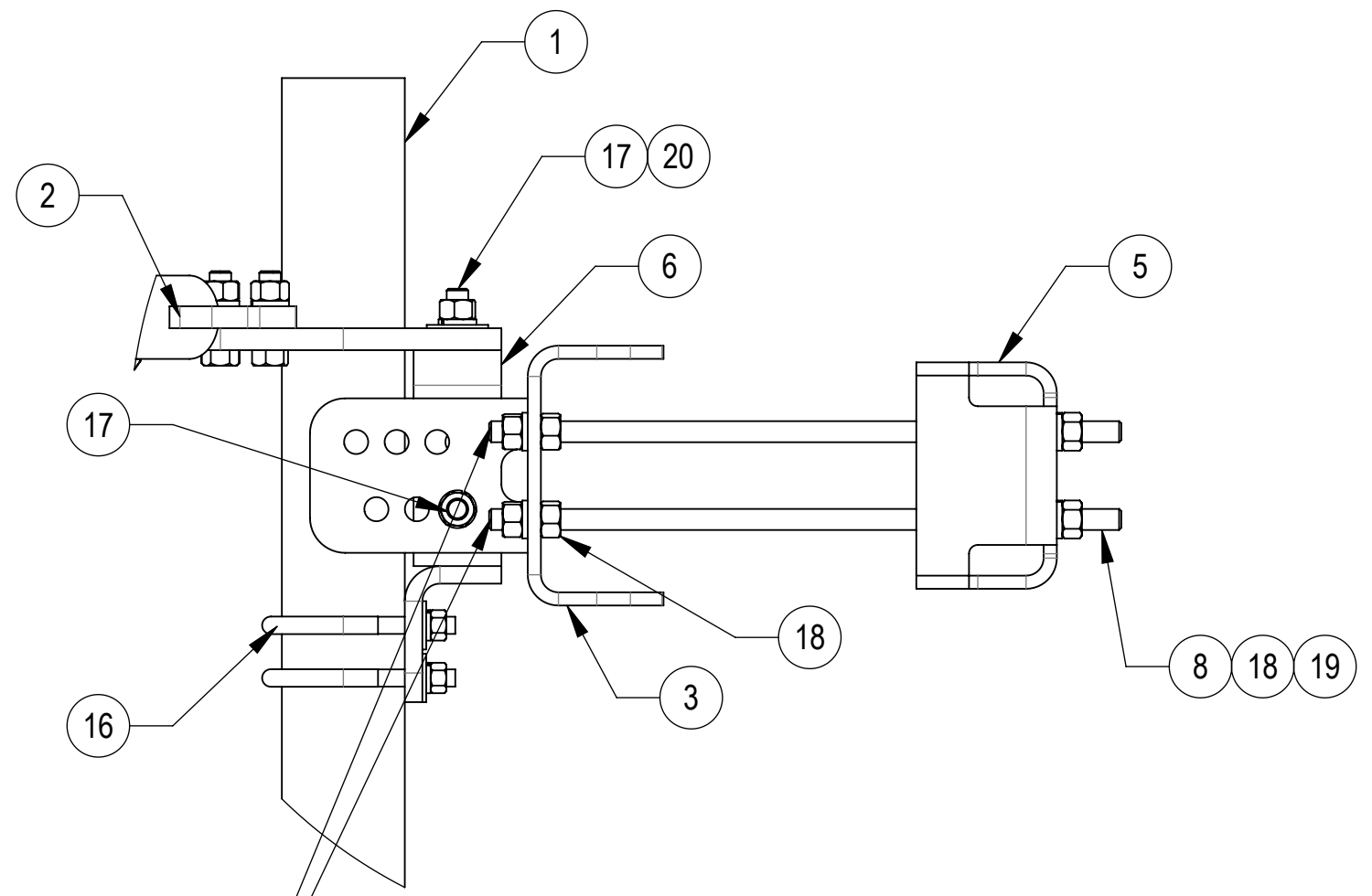
1



**DETAIL E**  
SCALE 1 : 4

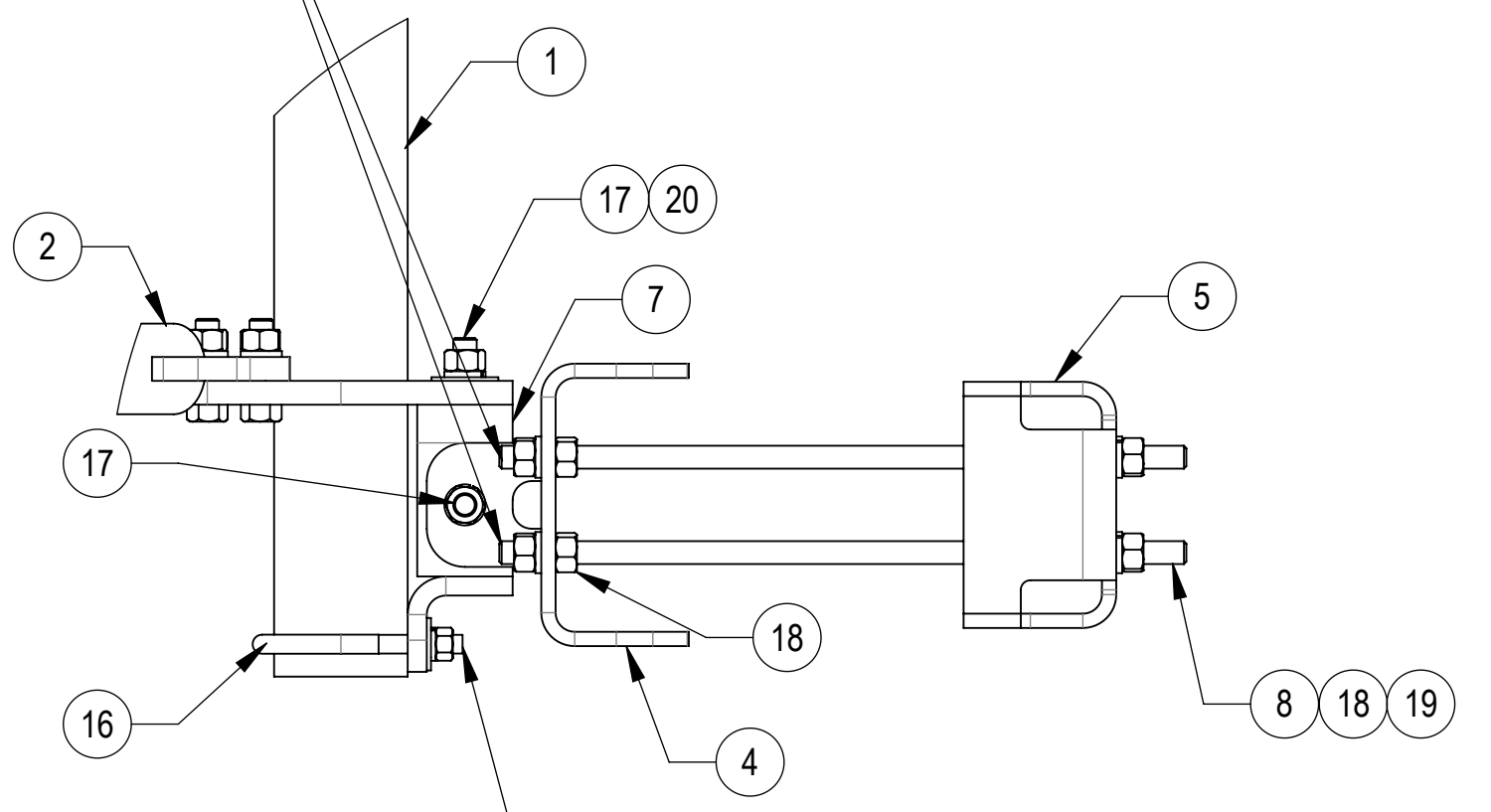


**DETAIL F**  
SCALE 1 : 4



**DETAIL G**  
SCALE 1 : 5

THE THREADED ROD CAN ONLY EXPOSE 4 TO 7 THREADS ON ONE SIDE OF THE BRACKET, WHICH IS TO PREVENT INTERFERENCE WITH THE SIDE BOLTS



**DETAIL H**  
SCALE 1 : 5

DO NOT OVER TIGHTEN, END OF POLE CAN BE DAMAGED



TITLE				
SFG22HDX SECTOR FRAME SERIES				
SIZE	SCALE	DOCUMENT NO.		
<b>C</b>	<b>1:20</b>	SFG22HDX		
		DRAWING		SHEET
		VERSION	STATUS	REVISION
		21	RE	T
				SHEET
				5 OF 12

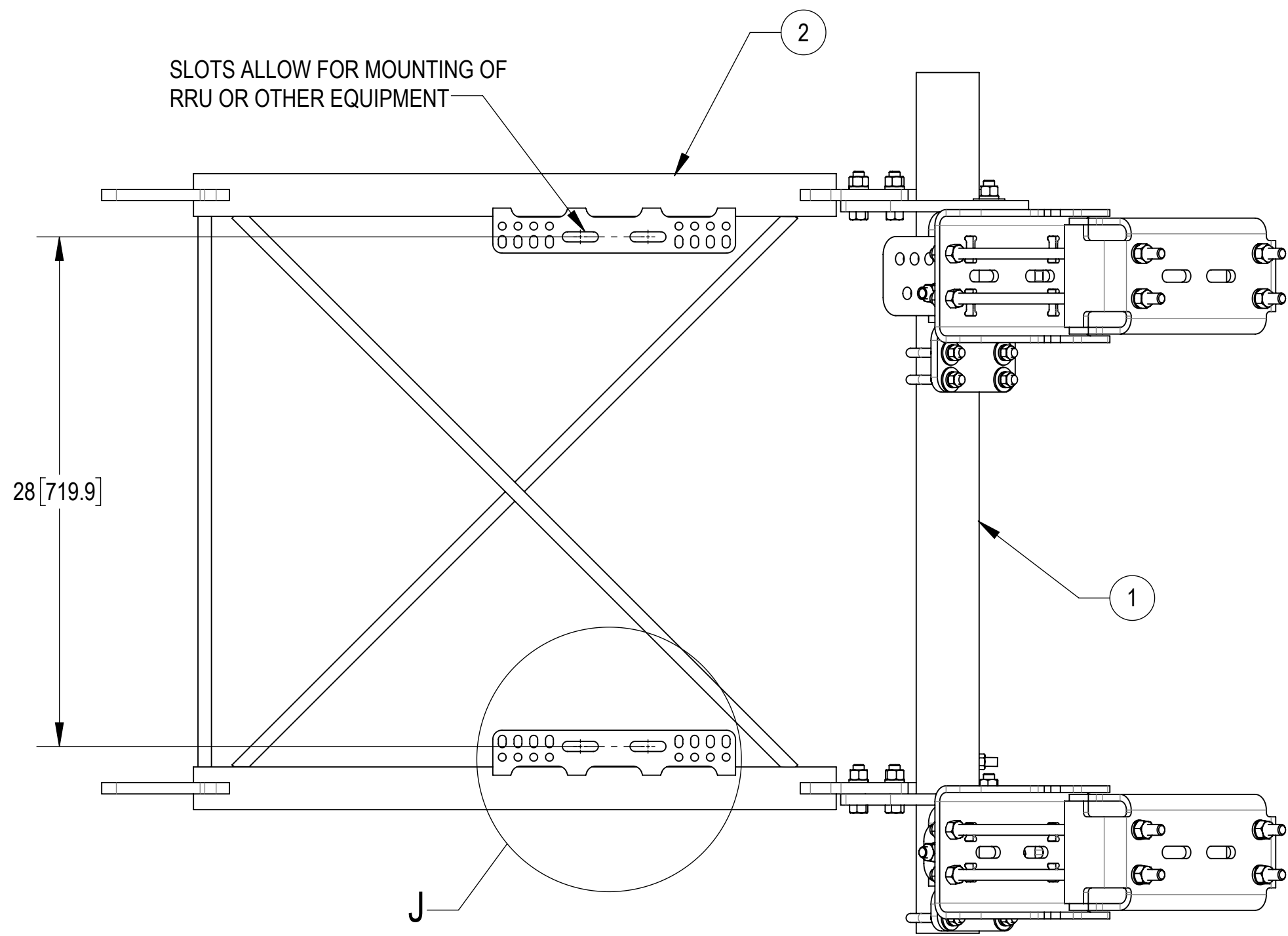
Confidential

4

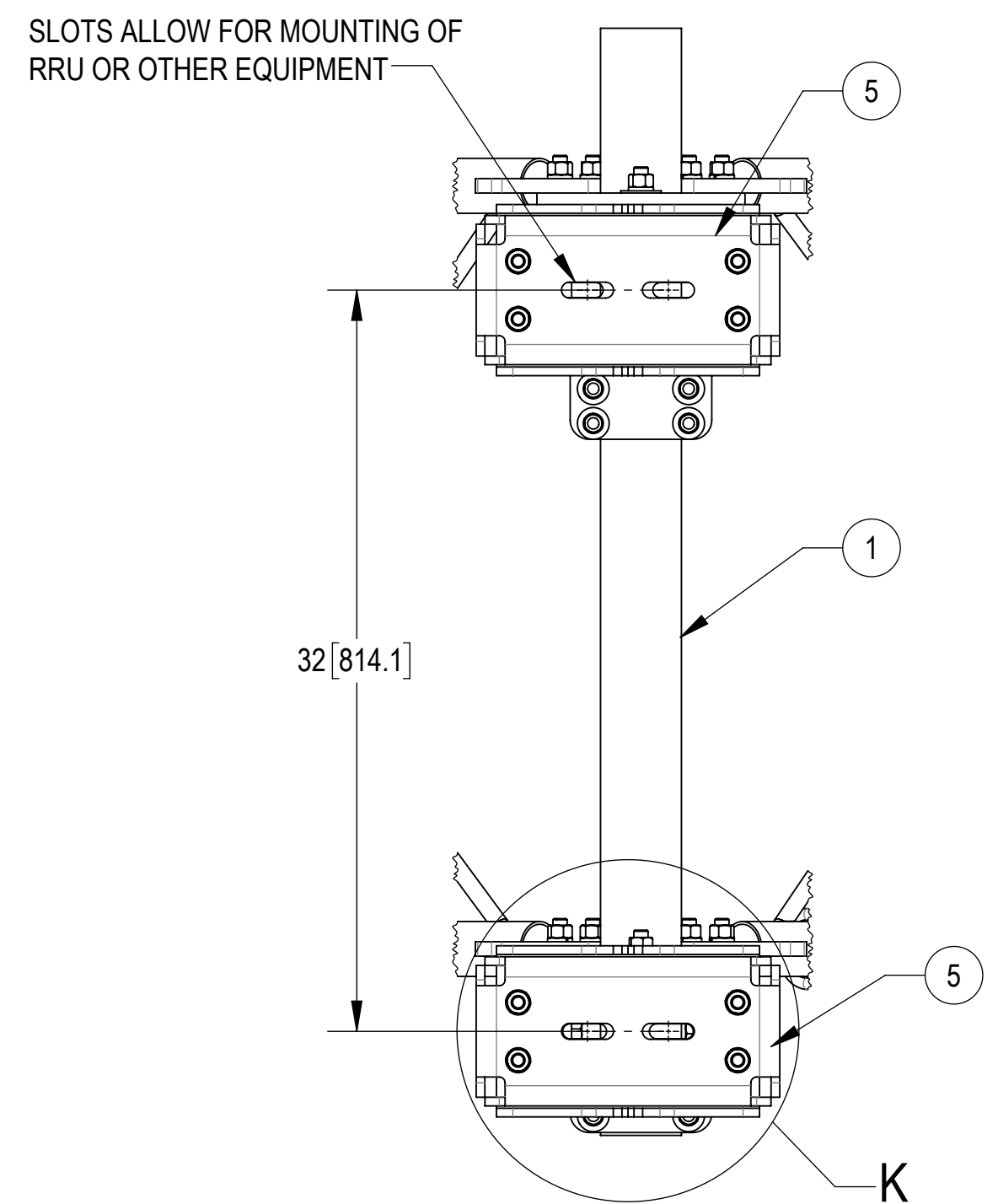
3

2

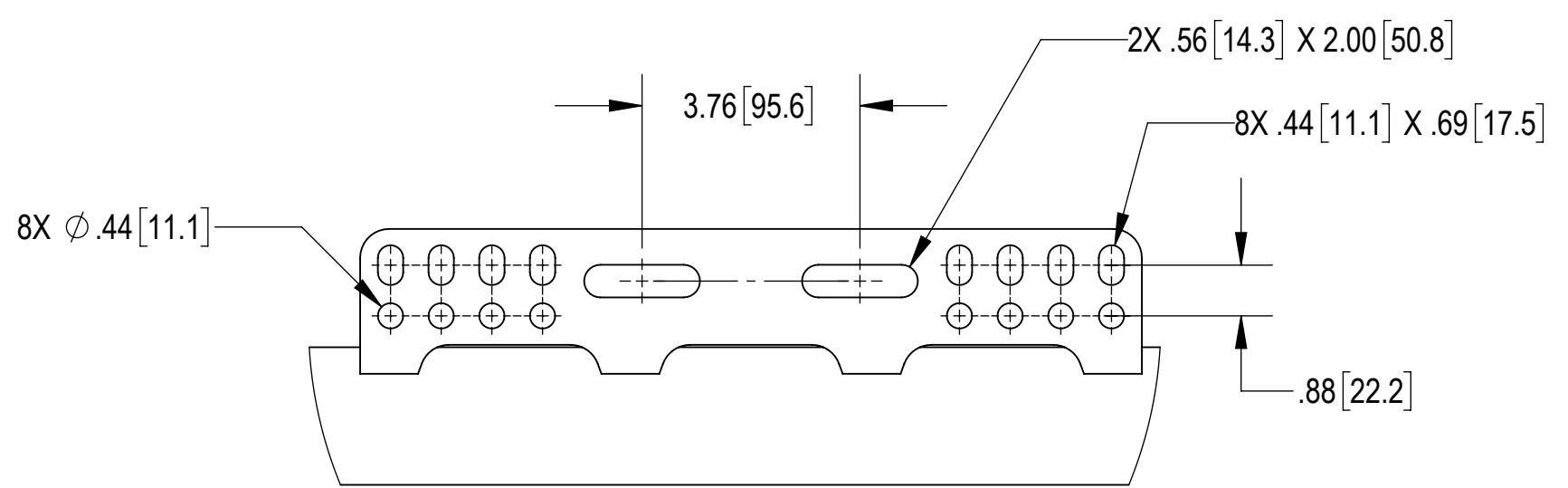
1



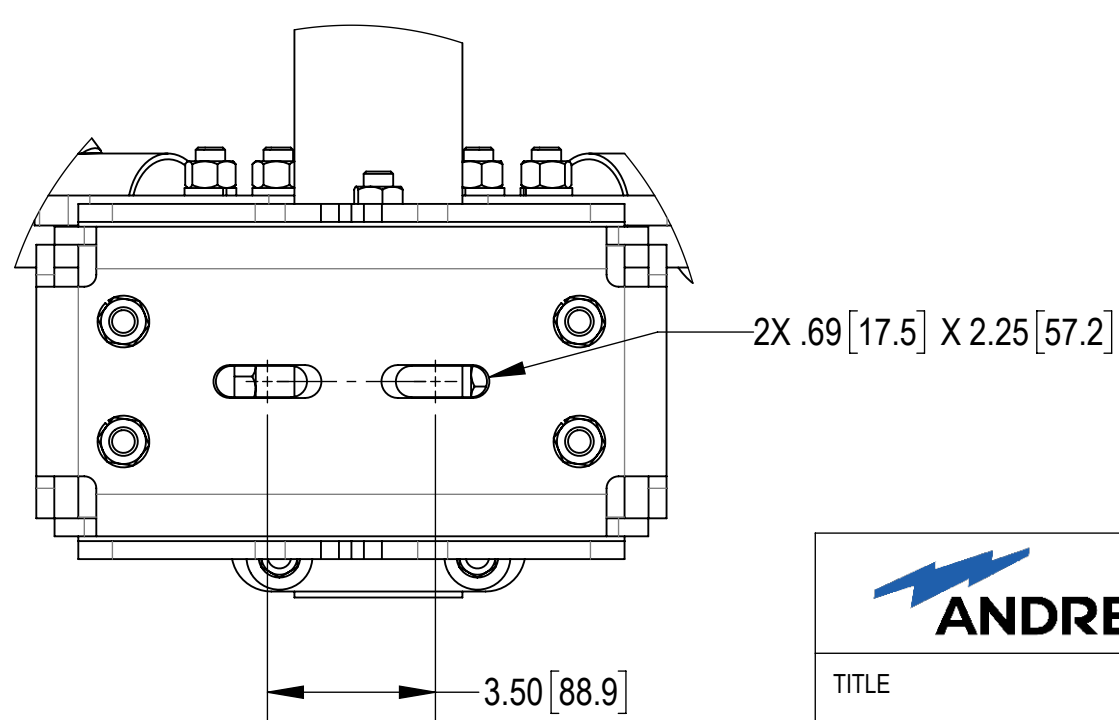
**SIDE VIEW**





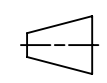
**BACK CROP VIEW**



**DETAIL J**  
SCALE 1 : 3



**DETAIL K**  
SCALE 1 : 4

 <b>ANDREW</b> an Amphenol company				
TITLE SFG22HDX SECTOR FRAME SERIES				
SIZE <b>C</b>	SCALE <b>1:6</b>	DOCUMENT NO. SFG22HDX		
 		DRAWING		SHEET
		VERSION 21	STATUS RE	REVISION T

Confidential



4

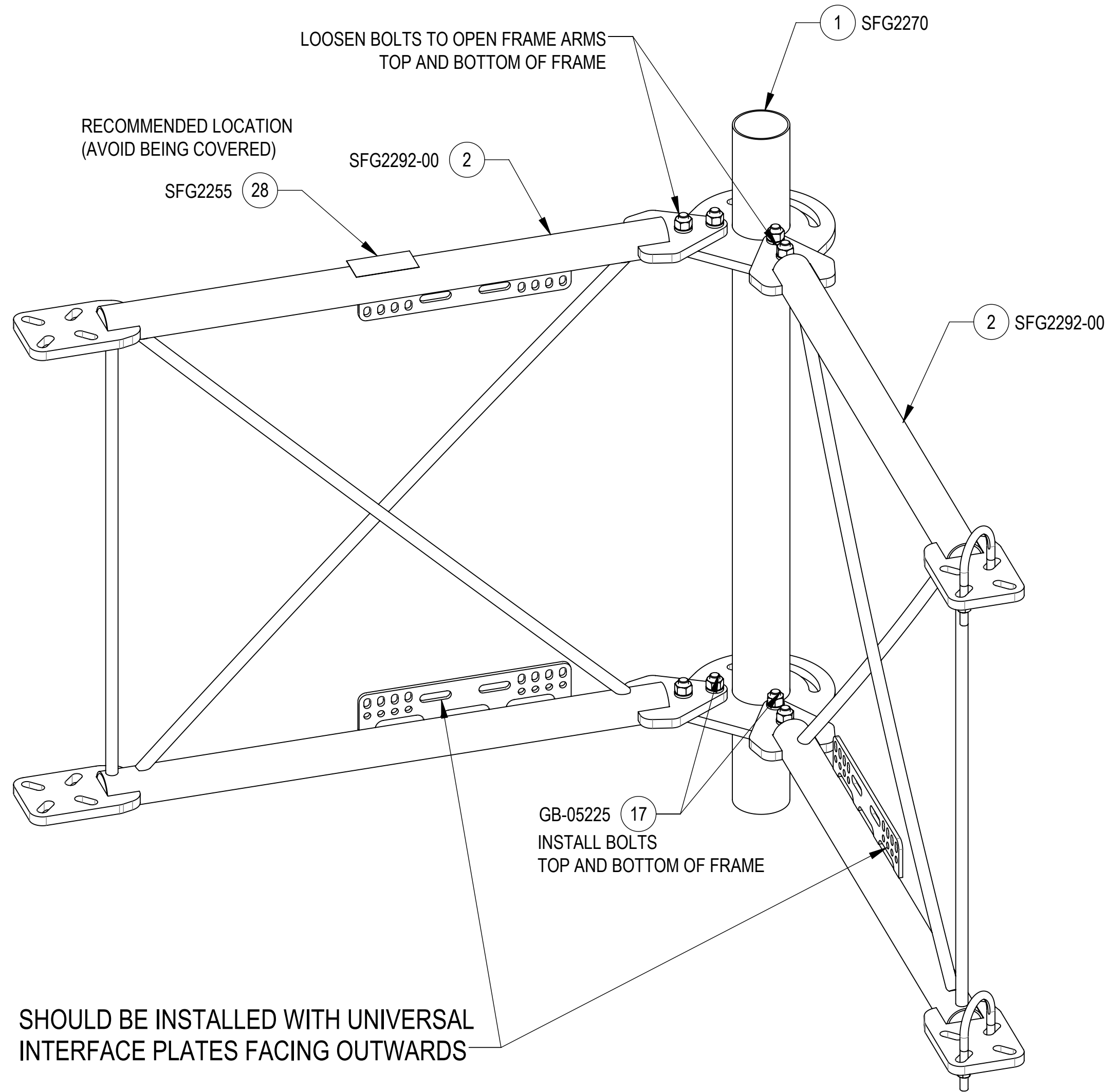
3

2



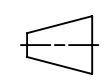
1

# INSTALLATION SEQUENCE - REFERENCE ONLY

**STEP 1: LOOSEN BOLT KITS (GB-05225) TO OPEN FRAME SUPPORT ARMS. INSTALL ADDITIONAL 4X BOLT KITS (GB-05225). PLACE LABEL (SFG2255) ON TOP OF STANDOFF ARMS (SFG2292-00). (WIPE GALVANIZED SURFACE WITH ALCOHOL CLEANER BEFORE APPLYING LABEL).**



TOP  
↓  
BOTTOM

				
TITLE				
SFG22HDX SECTOR FRAME SERIES				
SIZE	SCALE	DOCUMENT NO.		
C	1:4	SFG22HDX		
 	DRAWING			SHEET
	VERSION	STATUS	REVISION	
	21	RE	T	

Confidential

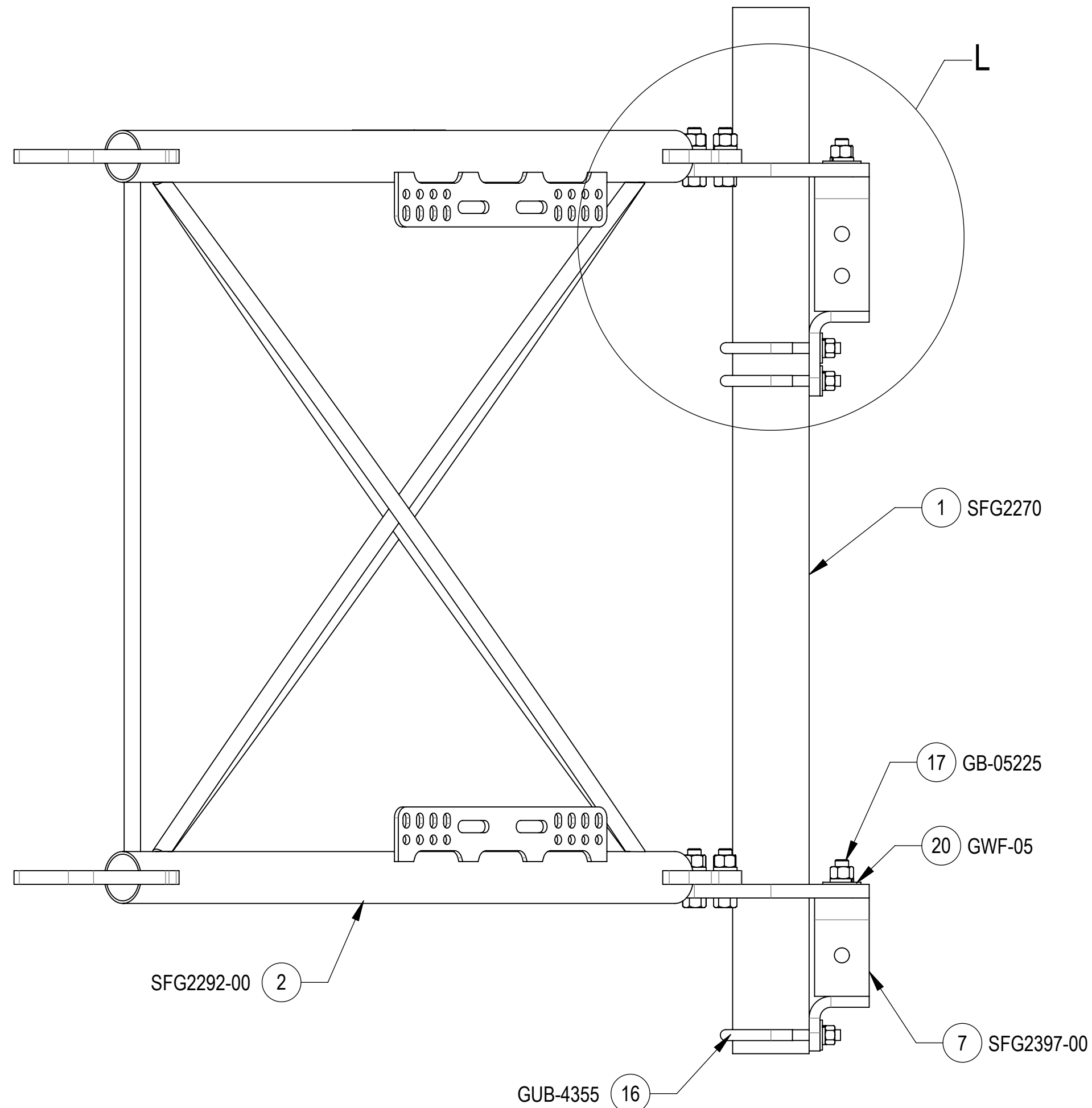
4

3

2

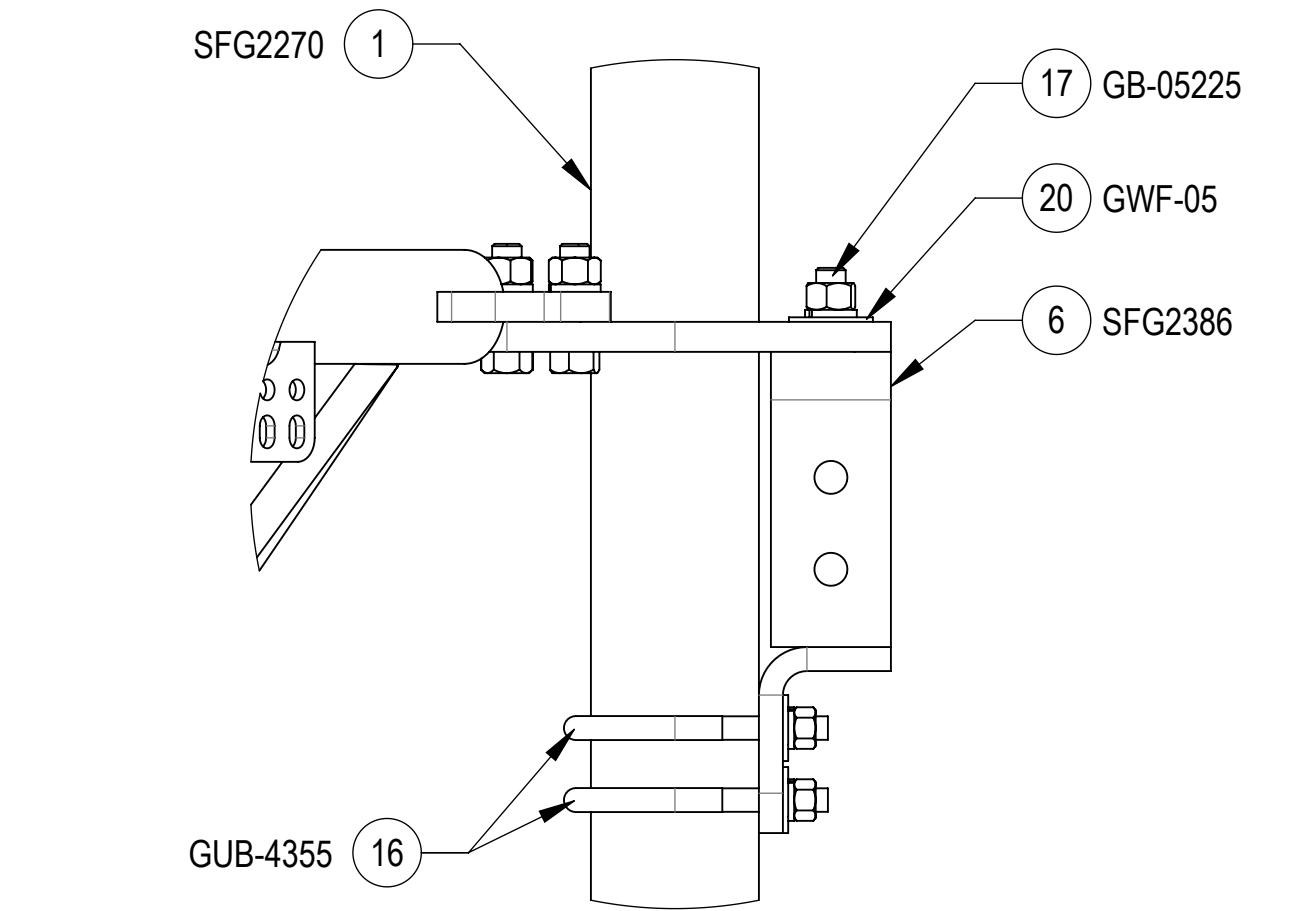
1

**STEP 2: AT TOP, ATTACH AZIMUTH BRACKET (SFG2386) TO BACK VERTICAL ARM MOUNT (SFG2270) USING BOLT KITS (GB-05225), U-BOLTS (GUB-4355) AND FLAT WASHERS (GWF-05).  
 AT BOTTOM, ATTACH AZIMUTH BRACKET (SFG2397-00) TO BACK VERTICAL ARM MOUNT (SFG2270) USING BOLT KITS (GB-05225), U-BOLTS (GUB-4355) AND FLAT WASHERS (GWF-05).**

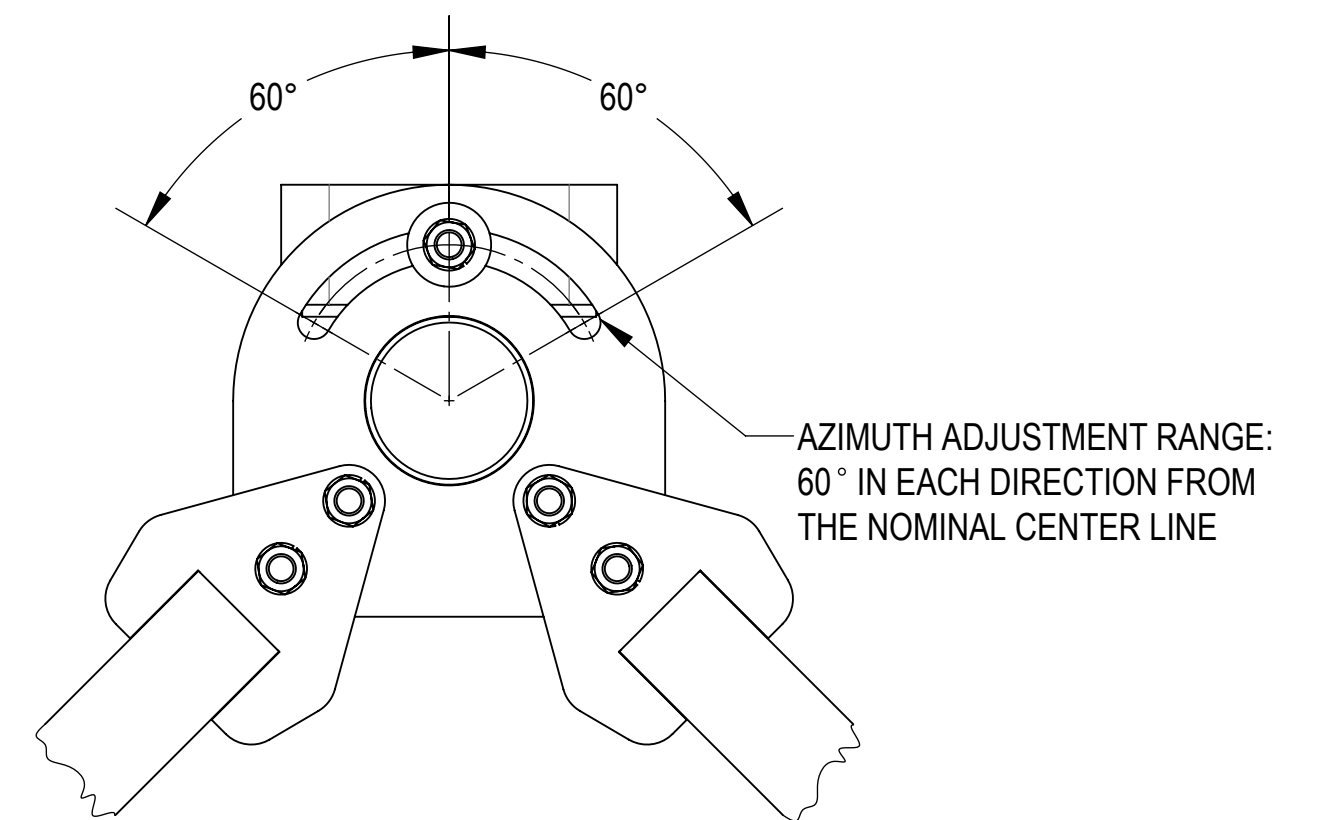


**SIDE VIEW**



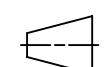
**TOP**  
 ↓  
**BOTTOM**



**DETAIL L**  
 SCALE 1 : 4



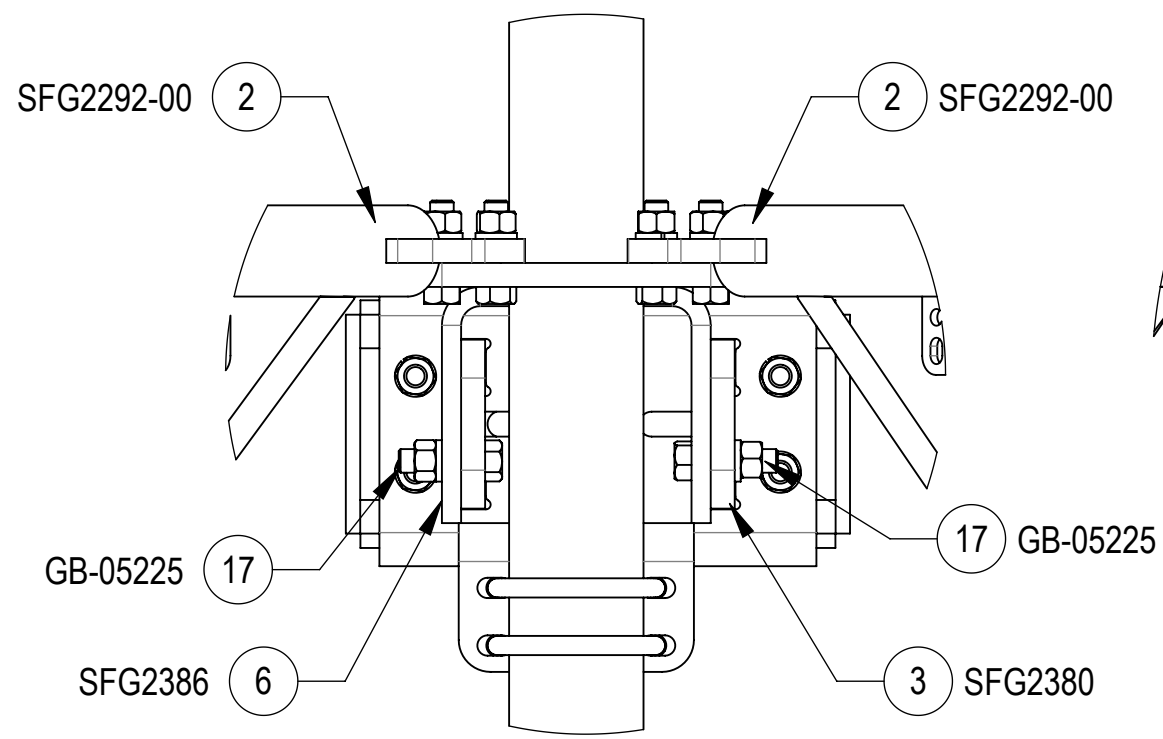
**TOP CROP VIEW**

 <b>ANDREW</b> an Amphenol company					
TITLE SFG22HDX SECTOR FRAME SERIES					
SIZE <b>C</b>	SCALE <b>1:6</b>	DOCUMENT NO. SFG22HDX			
 		DRAWING			SHEET 8 OF 12
		VERSION 21	STATUS RE	REVISION T	

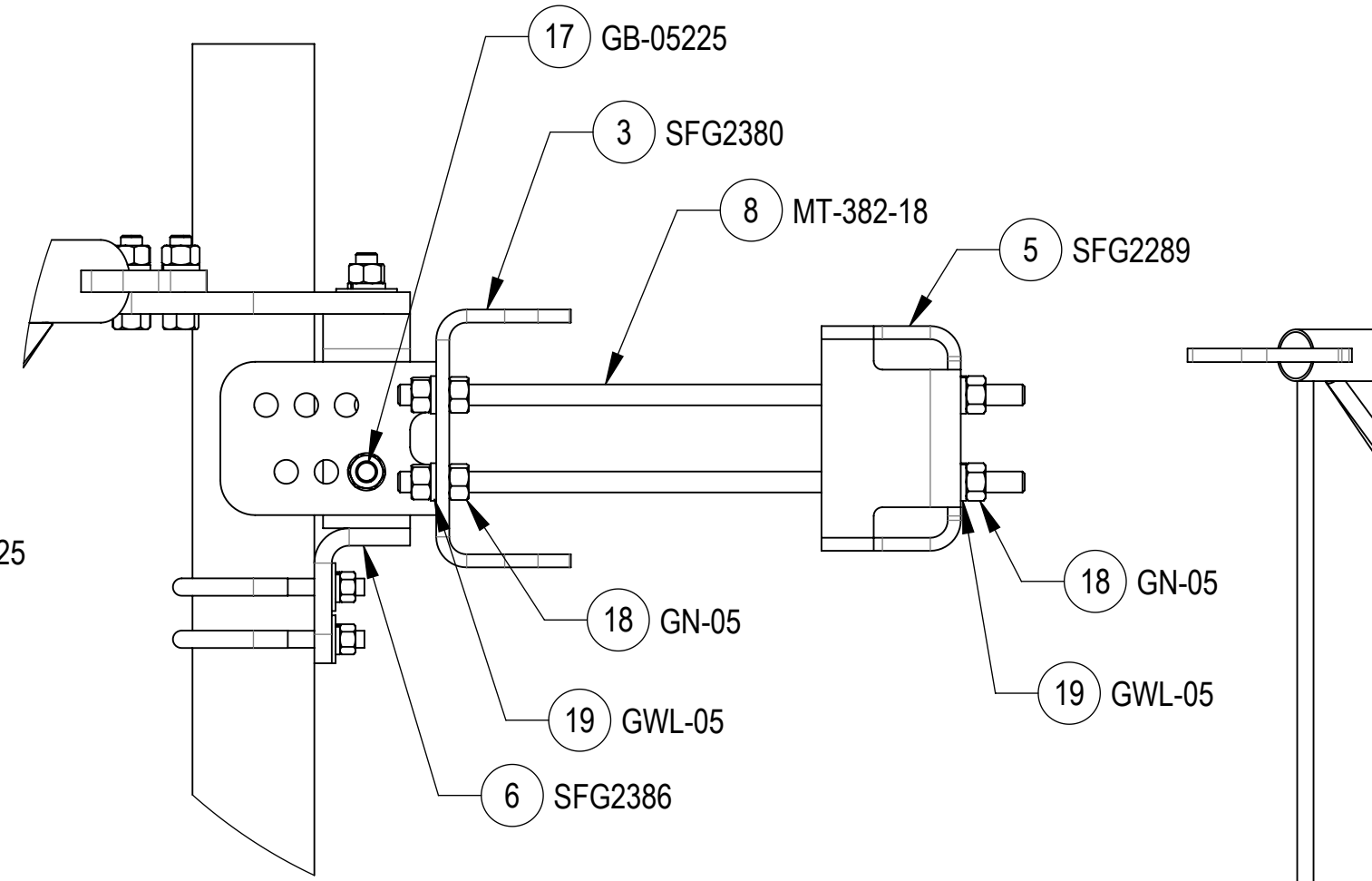
Confidential



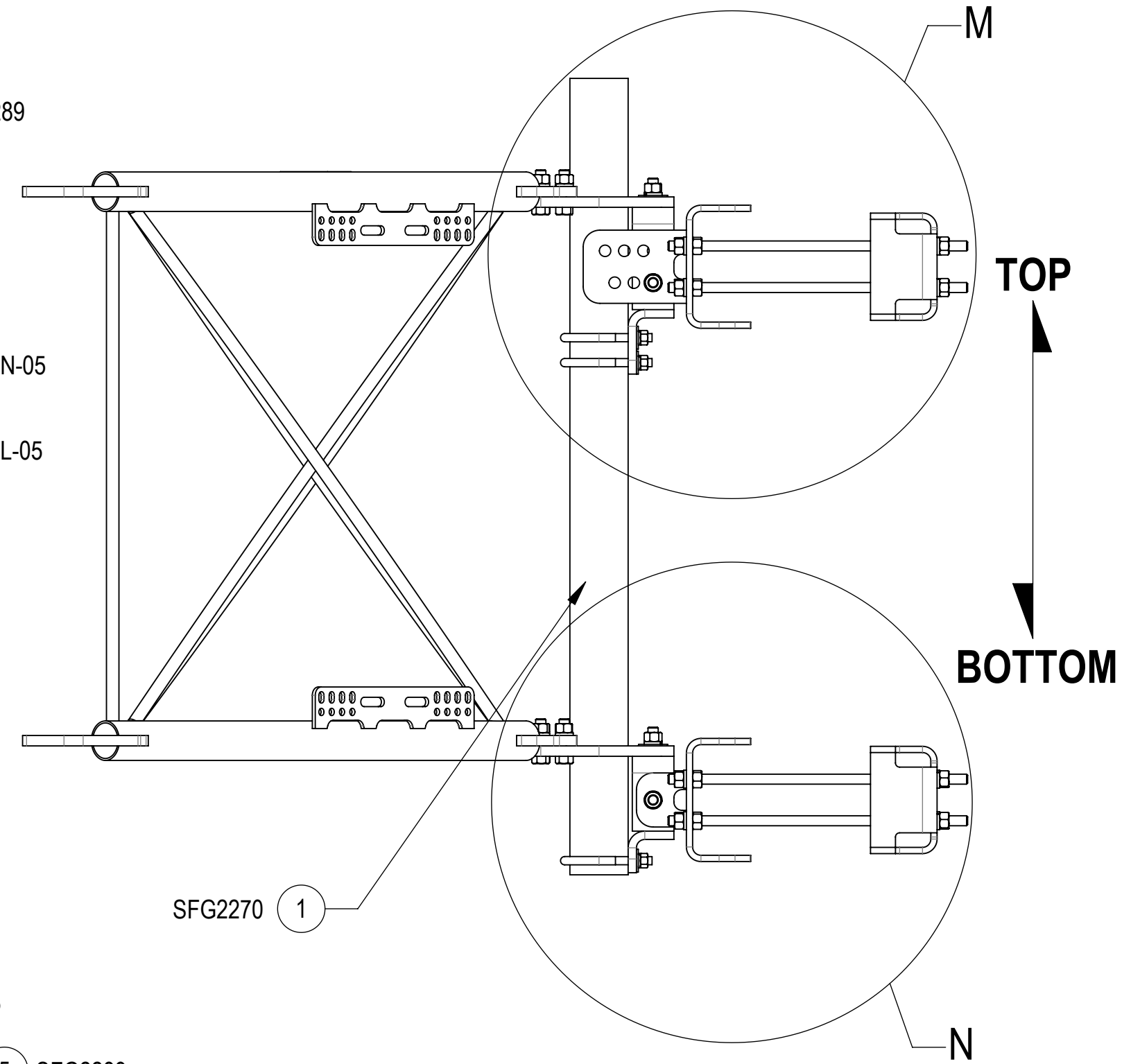
**STEP 3: AT TOP, ATTACH TOP TAPER BRACKET (SFG2380) TO AZIMUTH BRACKET (SFG2386) USING BOLT KITS (GB-05225);  
 AT BOTTOM, ATTACH LOWER TOWER LEG BRACKET (SFG2381) TO AZIMUTH BRACKET (SFG2397-00) USING BOLT KITS (GB-05225).**



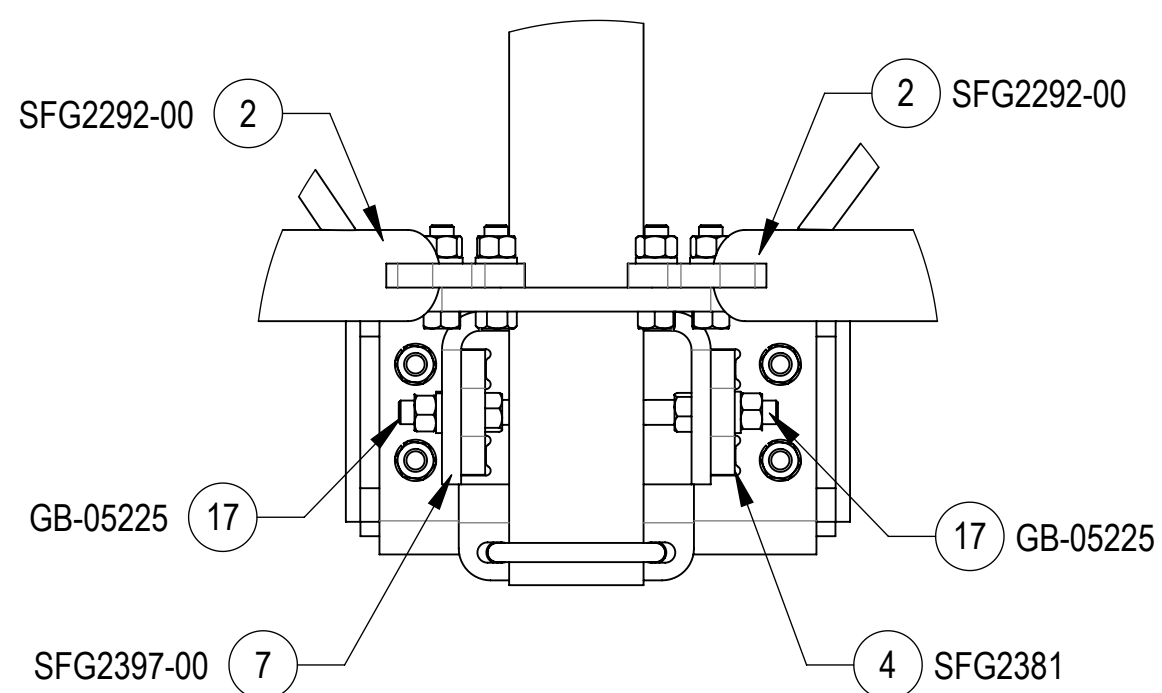
**DETAIL ISO TOP ROTATED VIEW**  
SCALE 1 : 5



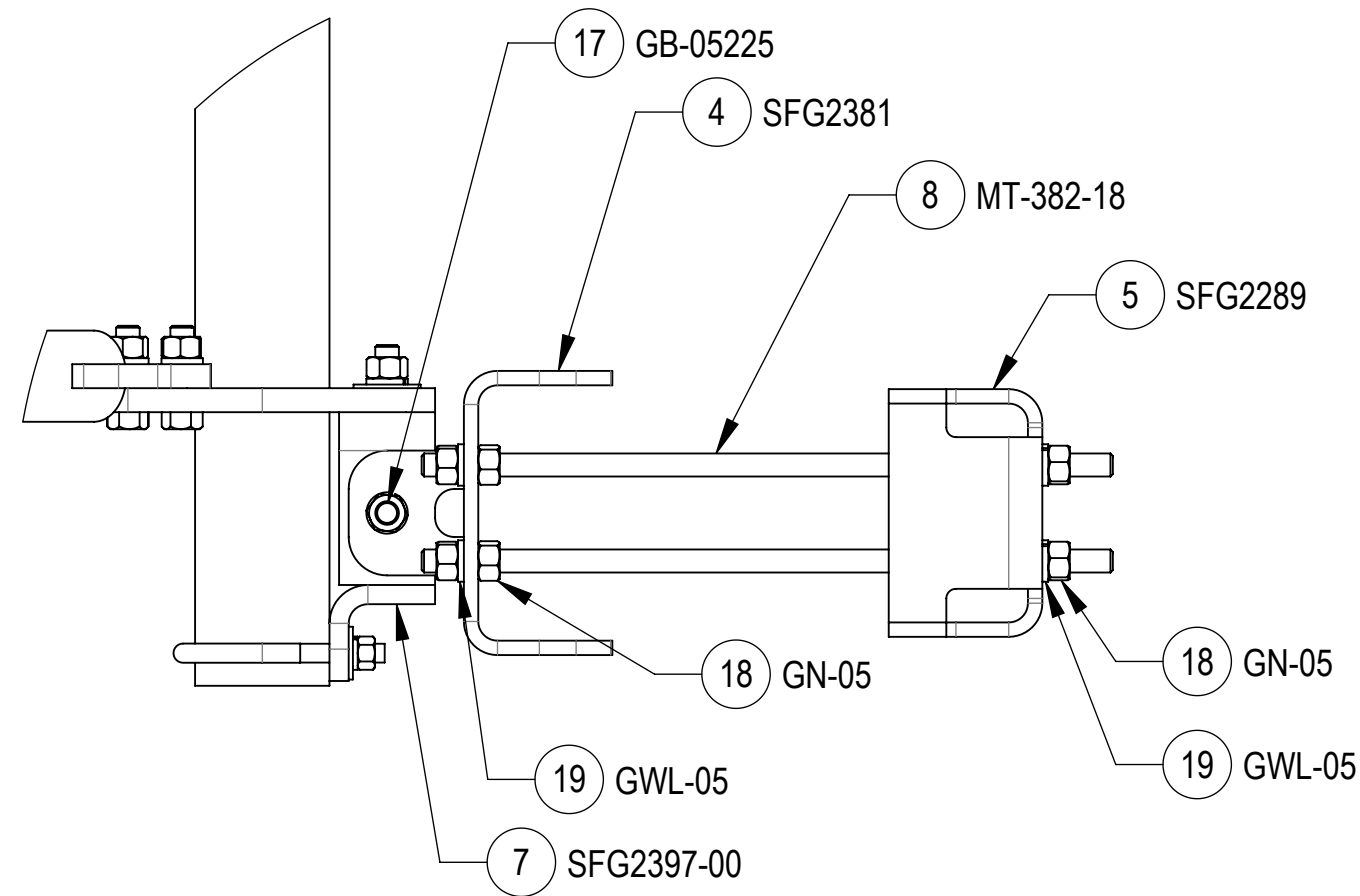
**DETAIL M**  
SCALE 1 : 5





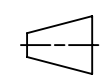
**SIDE VIEW**



**DETAIL ISO BOTTOM ROTATED VIEW**  
SCALE 1 : 5

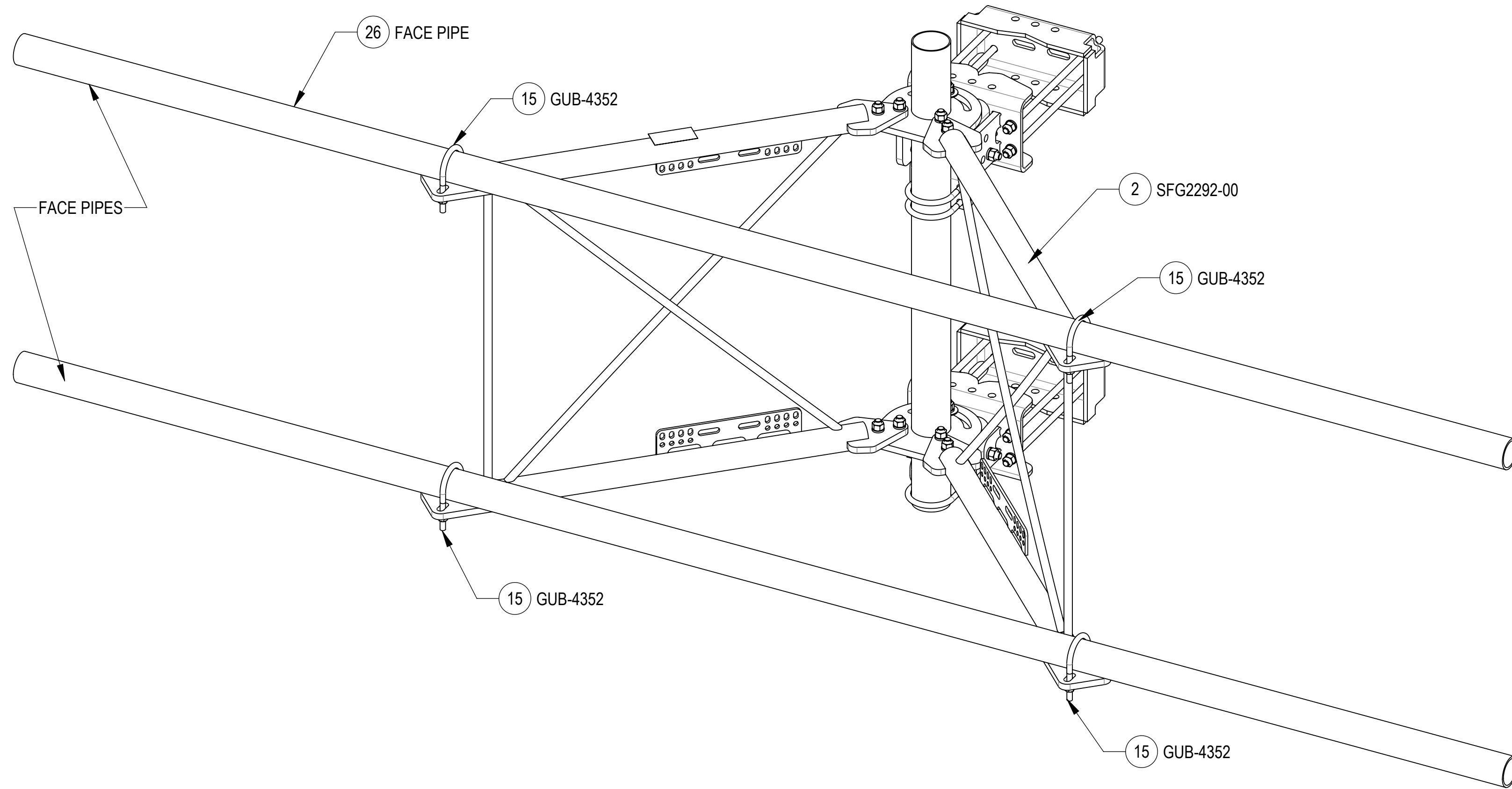


**DETAIL N**  
SCALE 1 : 5



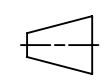
 <b>ANDREW</b> an Amphenol company				
TITLE SFG22HDX SECTOR FRAME SERIES				
SIZE <b>C</b>	SCALE <b>1:8</b>	DOCUMENT NO. SFG22HDX		
 		DRAWING		SHEET 9 OF 12
		VERSION 21	STATUS RE	

Confidential

**STEP 4: ATTACH FACE PIPES TO STANDOFF ARMS (SFG2292-00) USING U-BOLTS (GUB-4352)**



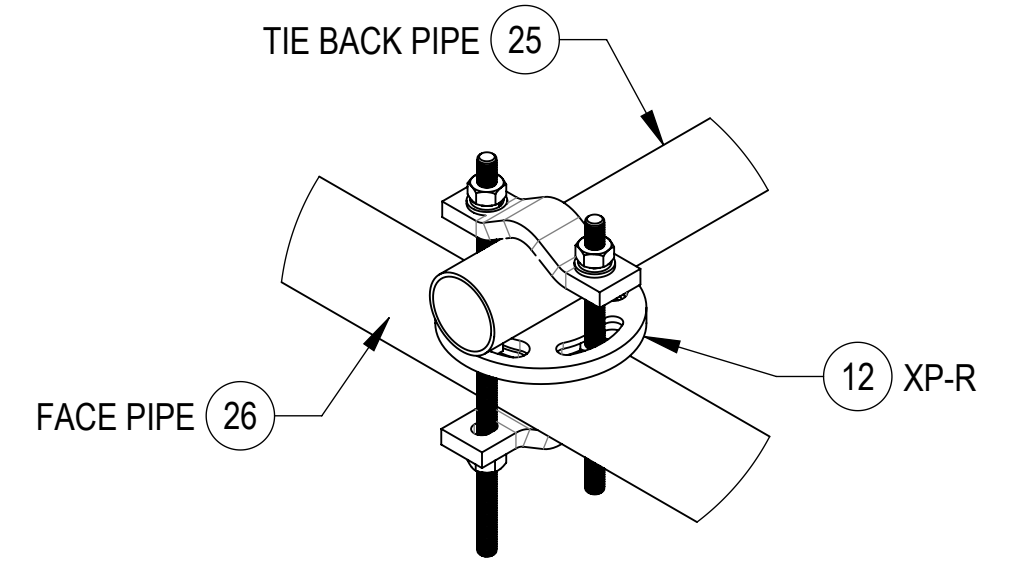
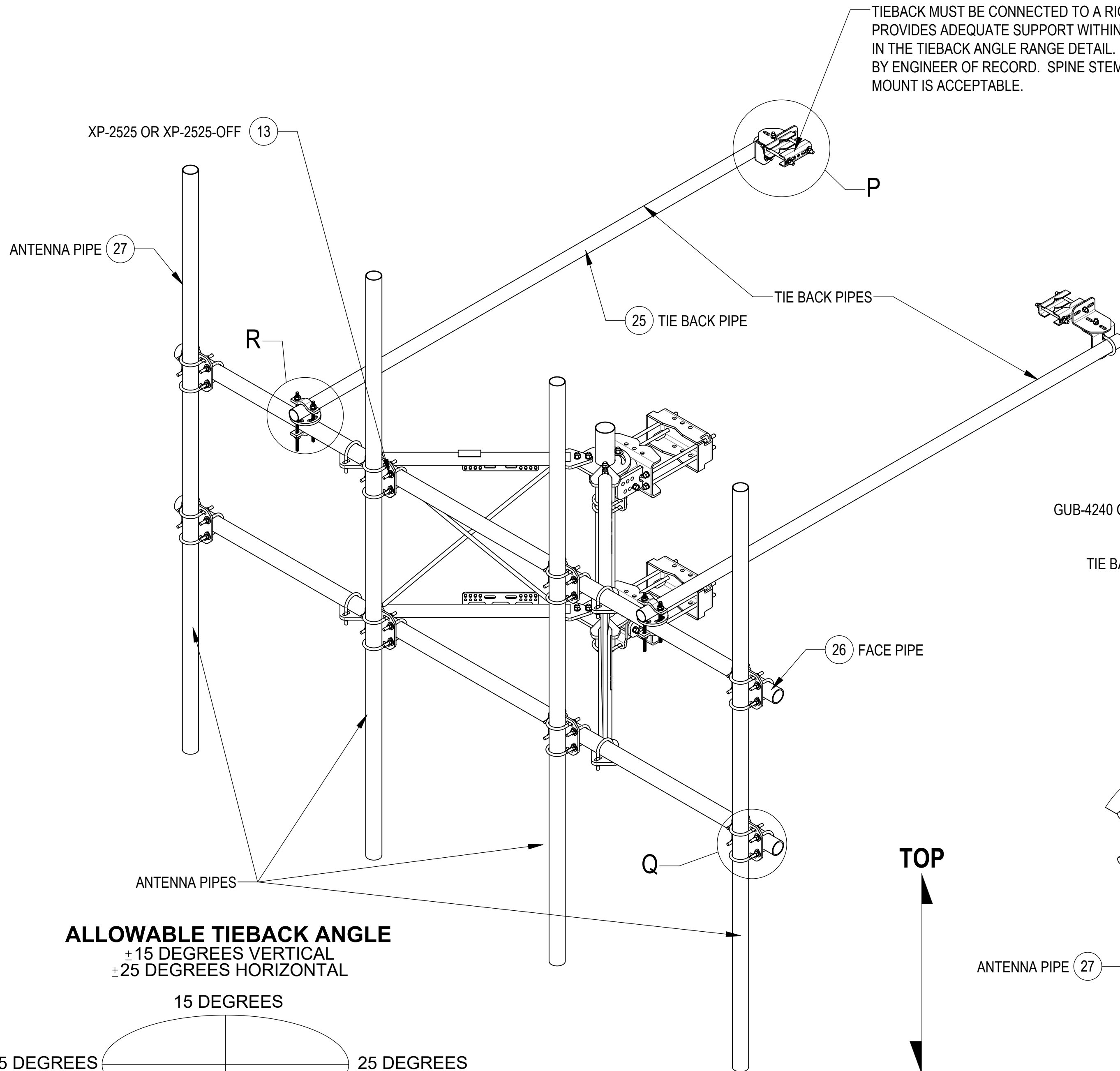
**ISO VIEW**

				
TITLE				
SFG22HDX SECTOR FRAME SERIES				
SIZE	SCALE	DOCUMENT NO.		
<b>C</b>	<b>1:8</b>	SFG22HDX		
 	DRAWING			SHEET
	VERSION	STATUS	REVISION	
		21	RE	T

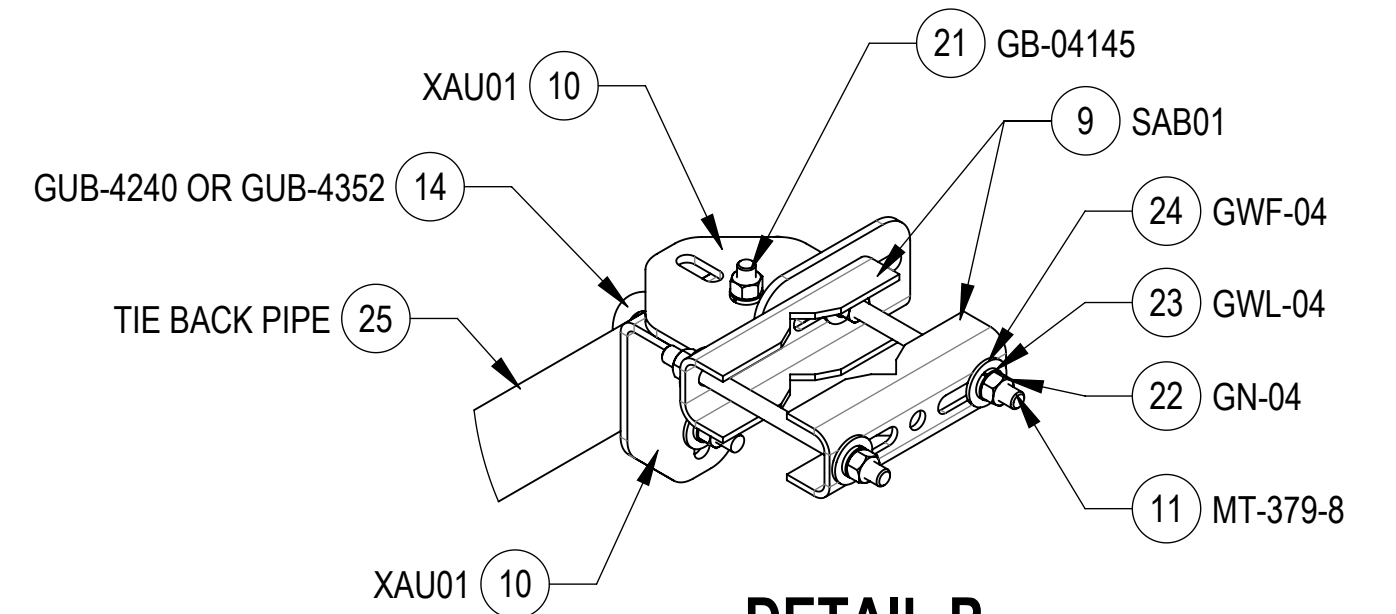
Confidential

**STEP 5: ATTACH ANTENNA PIPES TO FACE PIPES USING CROSSOVER PLATE KITS(XP-2525 OR XP-2525-OFF).  
ATTACH TIE BACK PIPES TO FACE PIPES USING ROUND CROSSOVER PLATE KITS (XP-R).**

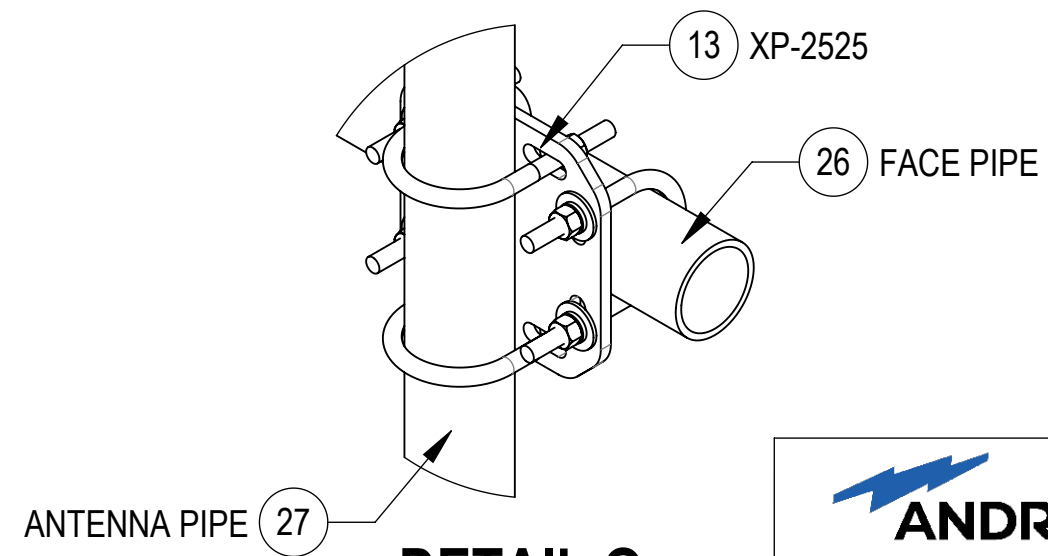
TIEBACK MUST BE CONNECTED TO A RIGID MEMBER THAT PROVIDES ADEQUATE SUPPORT WITHIN THE LIMITS NOTED IN THE TIEBACK ANGLE RANGE DETAIL. UNLESS APPROVED BY ENGINEER OF RECORD. SPINE STEM OF NEIGHBORING MOUNT IS ACCEPTABLE.



**DETAIL R**  
SCALE 1 : 5

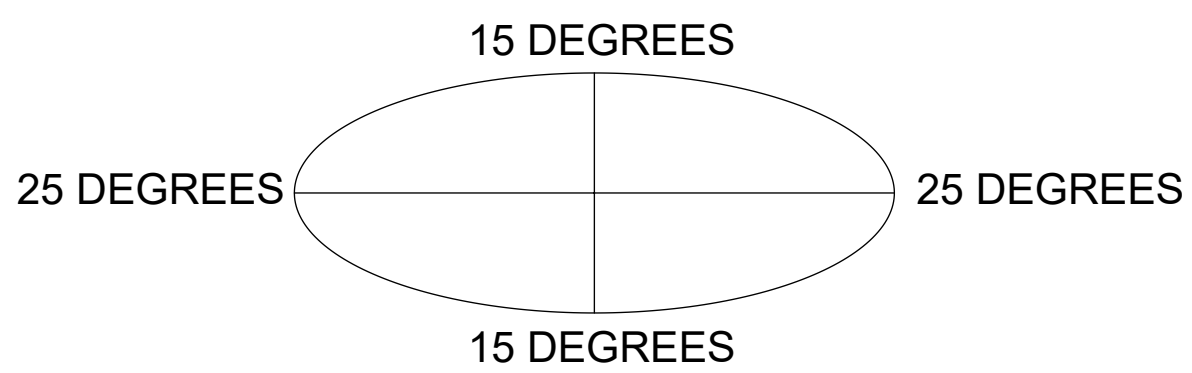


**DETAIL P**  
SCALE 1 : 5





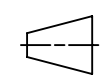
**DETAIL Q**  
SCALE 1 : 5

**ALLOWABLE TIEBACK ANGLE**  
±15 DEGREES VERTICAL  
±25 DEGREES HORIZONTAL



**ISO VIEW**

**TOP**  
↑  
**BOTTOM**  
↓

 <b>ANDREW</b> an Amphenol company				
TITLE SFG22HDX SECTOR FRAME SERIES				
SIZE <b>C</b>	SCALE <b>1:12</b>	DOCUMENT NO. SFG22HDX		
 		DRAWING		SHEET
		VERSION 21	STATUS RE	REVISION T

Confidential



4

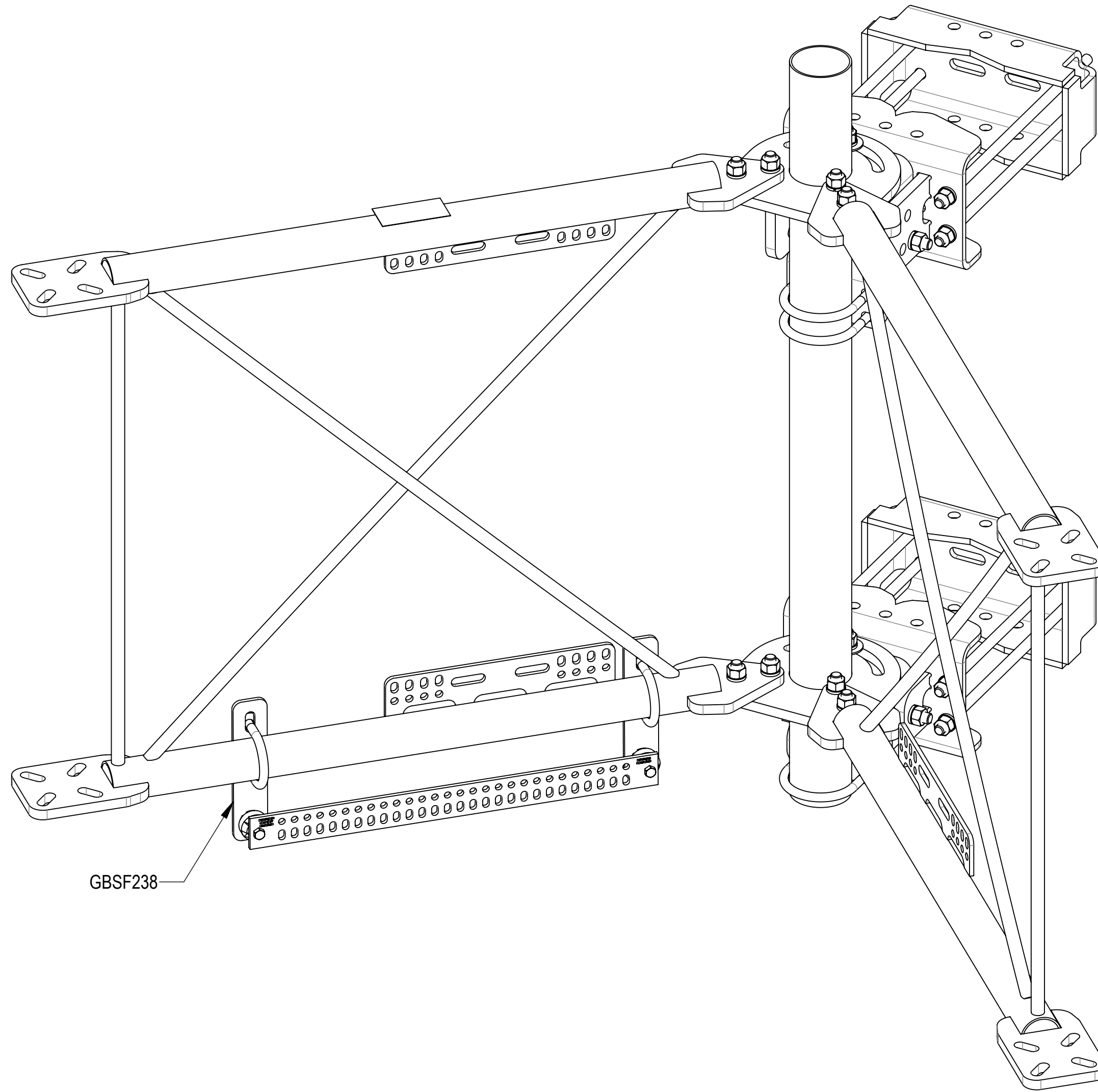
3

2

1

**OPTIONAL ACCESSORIES:**

BUS BAR MOUNT KIT GBSF238 IS WELL SUITED TO BE USED SHOULD THE NEED ARISE  
NOTE THAT THIS KIT DOES NOT INCLUDE THE ISOLATORS OR BUS BAR



GBSF238

**ISO VIEW**

**ANDREW** an Amphenol company

TITLE  
SFG22HDX SECTOR FRAME SERIES

SIZE <b>C</b>	SCALE <b>1:12</b>	DOCUMENT NO. SFG22HDX
------------------	----------------------	--------------------------

	DRAWING			SHEET 12 OF 12
	VERSION 21	STATUS RE	REVISION T	

Confidential

4

3

2

1