

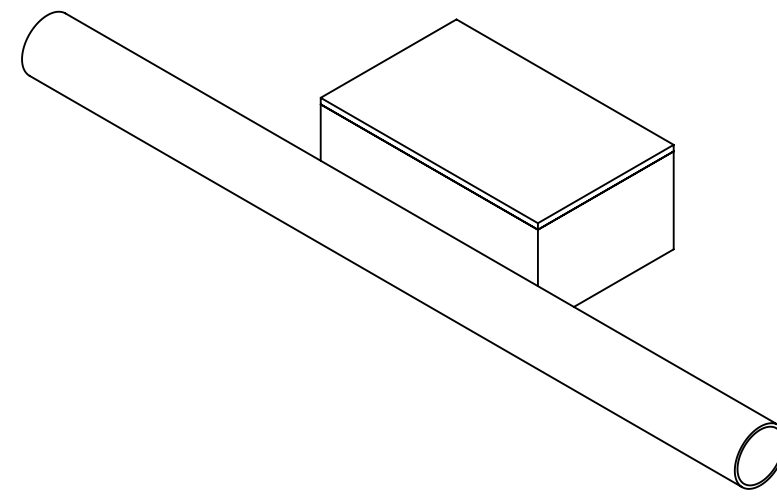
4

3

2

1

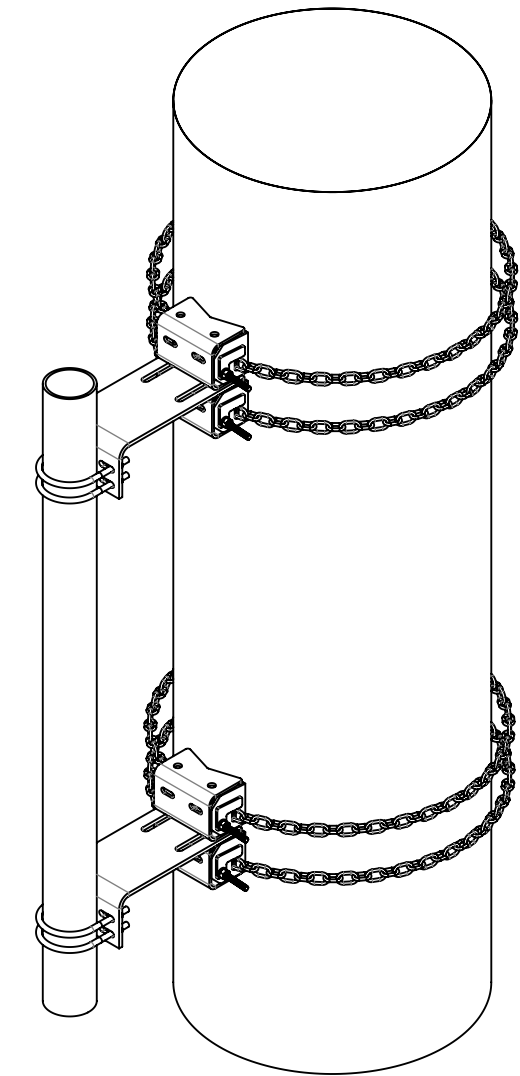
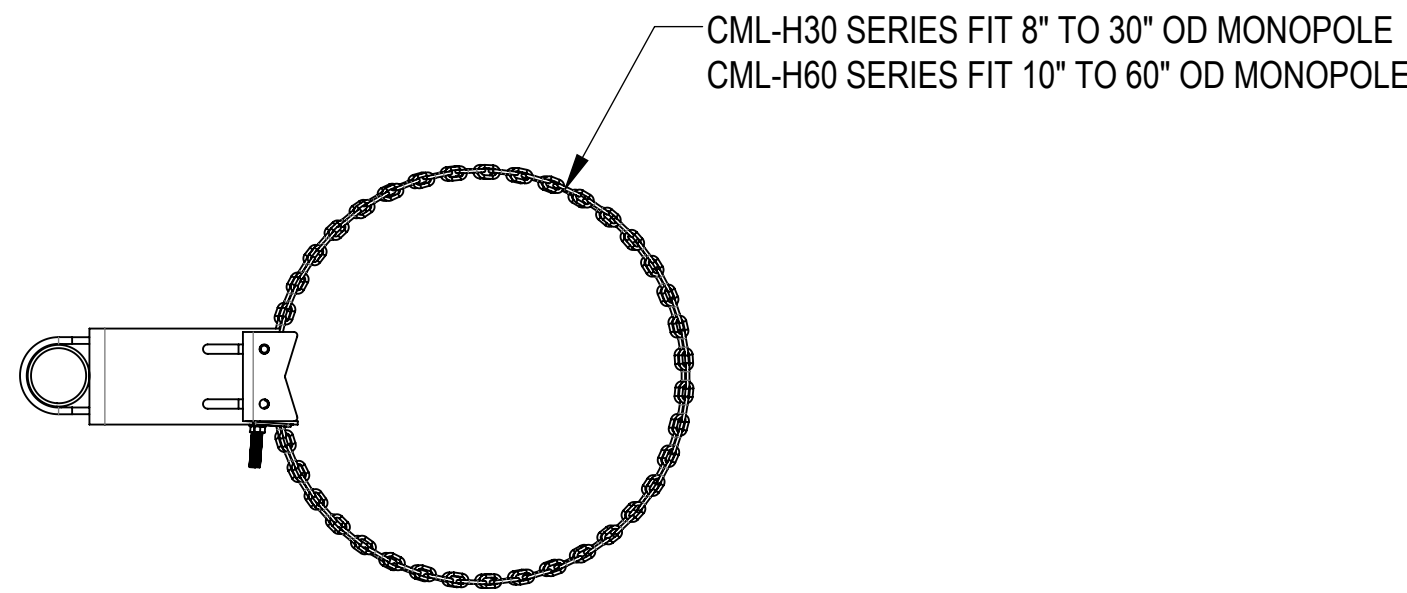
- 1.0 GENERAL NOTES  
 1.1 ALL METRIC DIMENSIONS ARE IN BRACKETS [X. X]  
 1.2 FOR PATENT INFO: <https://www.adwpat.com>
- 2.0 DESIGN NOTES  
 2.1 ANY HAZARDS OR OBSTRUCTIONS TO THE CLIMBING FACILITY AND SAFETY CLIMB MUST BE IDENTIFIED PRIOR TO INSTALLING THE APPURTENANCE. ADDITIONAL PRODUCTS MAY BE REQUIRED TO MAINTAIN THE INTEGRITY OF THE SAFETY CLIMB. DURING INSTALLATION, TEMPORARY AND/OR PERMANENT PRECAUTIONARY MEASURES SHOULD BE TAKEN TO PRESERVE THE CLIMBING FACILITY AND/OR SAFETY CLIMB.
- 3.0 MANUFACTURING/SPECIAL REQUIREMENTS  
 3.1 TIGHTEN ALL BOLTS SECURING FLAT PLATES BY THE TURN-OF-NUT METHOD. TIGHTEN ALL U-BOLTS USING TURN-OF-NUT METHOD WITH ATTENTION TO LEAVE EQUAL DISTANCE AND EQUAL FORCE ON EACH LEG OF THE U-BOLT.  
 3.2 ATTACH THE PIPES OR PIPE MOUNTS TO THE BRACKETS PRIOR TO ADDING THE JAW-BOLT/CHAIN ASSEMBLY.
- 4.0 TEST
- 5.0 PACKAGING  
 5.1 PACKAGING SHALL MEET ANDREW REQUIREMENTS PER DOCUMENT IS-PL-3005  
 5.2 PRINTED DOCUMENT TO BE PLACED INSIDE POLYBAG AND THEN IN SHIPPING CONTAINER  
 5.3 EXTRA HARDWARE MAY BE SUPPLIED, BAGGED AND SHIPPED



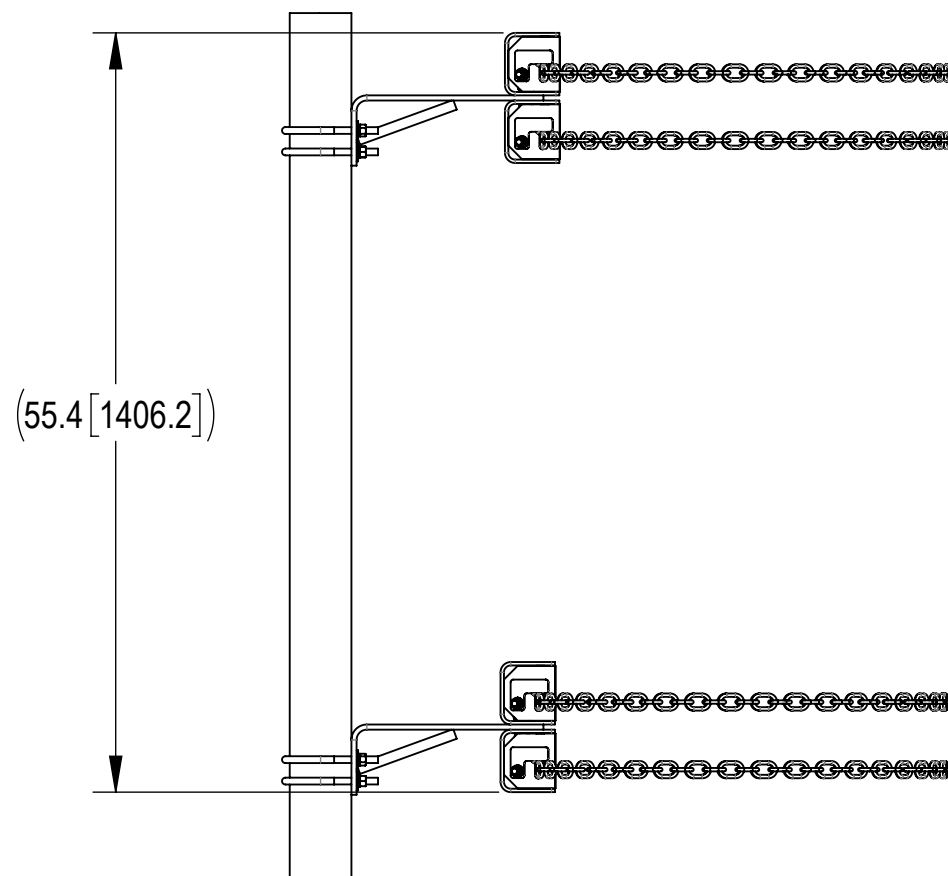
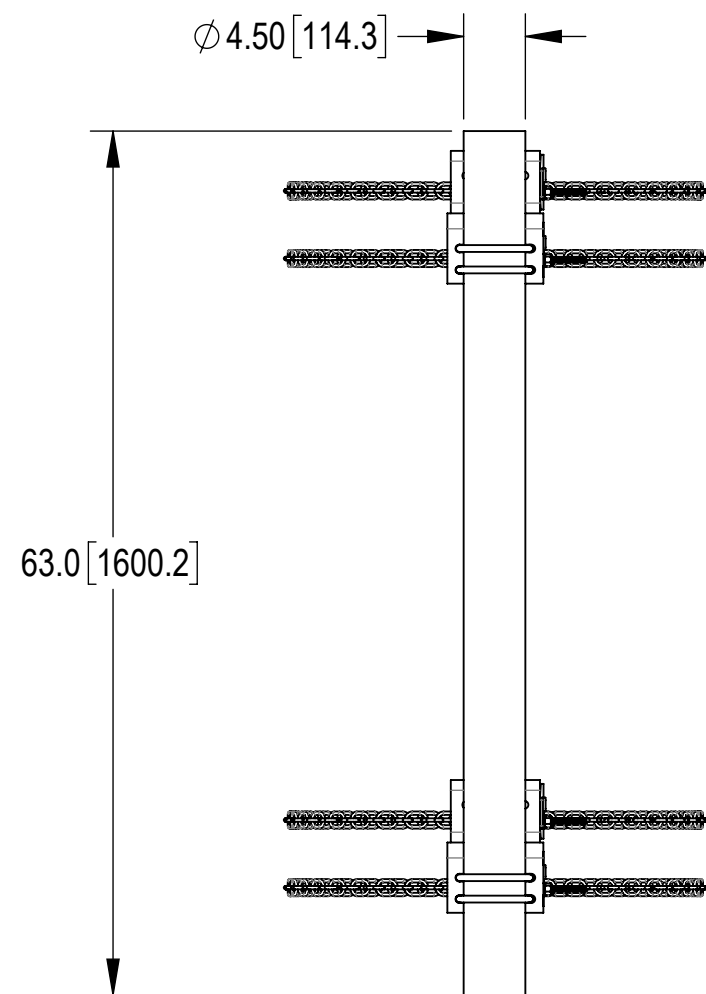
**PACKAGE**  
 (CML-H30-63 SHOWN FOR REFERENCE)

REVISIONS			
REV.	DESCRIPTION	DATE	APPROVED
A	INITIAL RELEASE	YX1027 29AUG25	BA1025 50104682AMO

TABLE: CONFIGURATIONS				
PART NUMBER	WEIGHT	INCLUDED PARTS		
		CML-H30-B	CML-H60-B	MT-653-63
CML-H30-63	141.25 LBS	1	-	1
CML-H60-63	165.25 LBS	-	1	1



**ATTACHED TO MONOPOLE VIEW**  
 (CML-H30-63 SHOWN FOR REFERENCE)



**ANDREW**® an Amphenol company

TOLERANCES  
 0 PLACE X[X] ± 0.25[6.3]    2 PLACE .XX[X] ± 0.03[0.8]  
 1 PLACE .X[X] ± 0.06[1.5]    ANGLES ± 2°

SAP MATERIAL MASTER  
**SEE TABLE**

FINISH \_\_\_\_\_ MATERIAL \_\_\_\_\_

NAME	DATE	TITLE
CE YX1027	29AUG25	<b>HEAVY DUTY STANDOFF CHAIN MOUNT</b>
RW YX1027	08/29/2025	
AD YMENG	09/04/2025	SCALE: <b>1:16</b> DOCUMENT NO. <b>CML-H SERIES</b>
RE YMENG	09/04/2025	

ECN 50104682AMO

SIZE	Auth Group	INSL	MODEL	DRAWING			SHEET
<b>C</b>			VERSION: 00    STATUS: RE    REVISION: A	VERSION: 00	STATUS: RE	REVISION: A	1 OF 1

UNLESS OTHERWISE SPECIFIED DIMENSIONS ARE IN INCHES INTERPRET PER ANSI Y 14.5M-1994

DENSITY	lbs/in <sup>3</sup>
MASS	lbs
VOLUME	in <sup>3</sup>
SURFACE AREA	in <sup>2</sup>
HEIGHT	
LENGTH	
WIDTH	

Confidential

4

3

2

1