

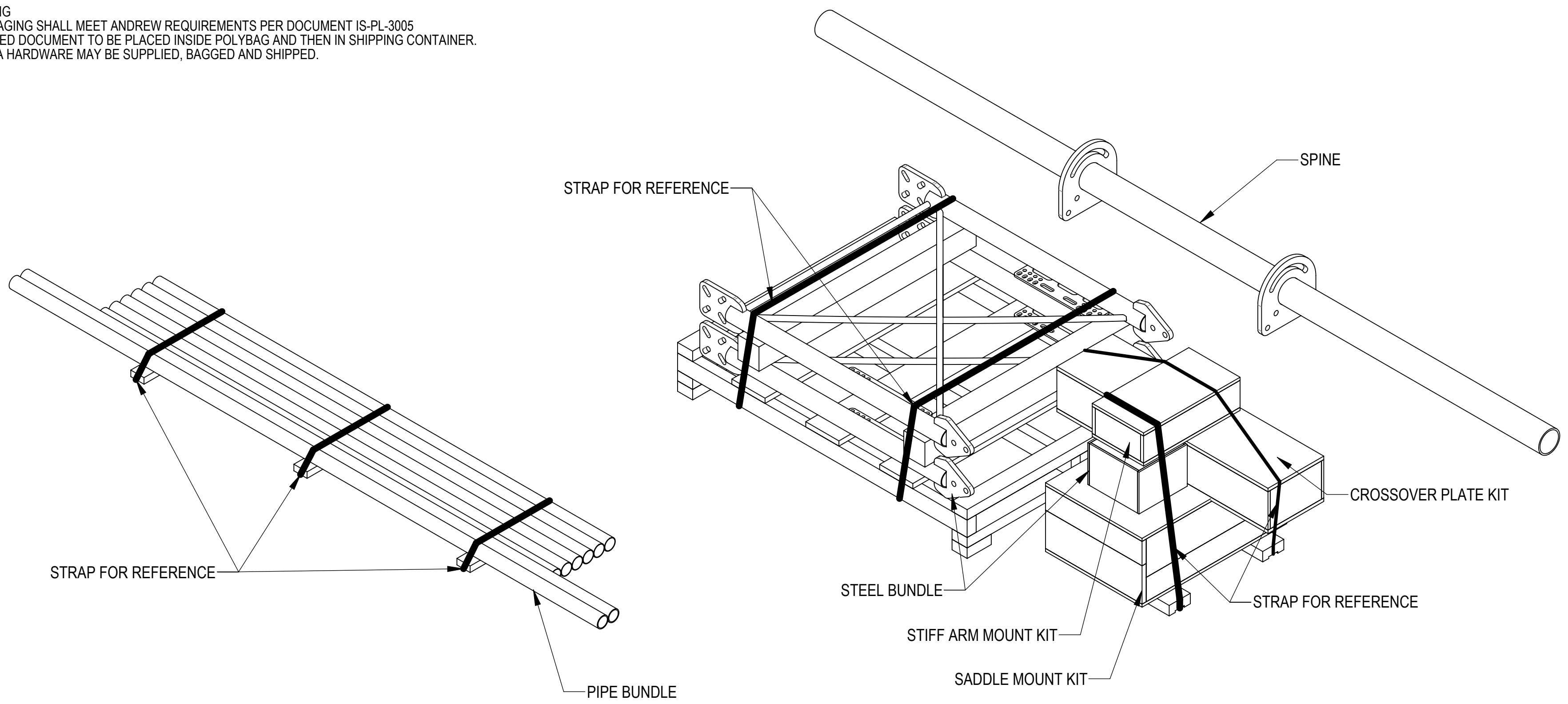
- 1.0 GENERAL NOTES
  - 1.1 ALL METRIC DIMENSIONS ARE IN BRACKETS [X.XX]
  - 1.2 FOR PATENT INFO: <https://www.adwpat.com>


- 2.0 DESIGN NOTES
  - 2.1 ANY HAZARDS OR OBSTRUCTIONS TO THE CLIMBING FACILITY AND SAFETY CLIMB MUST BE IDENTIFIED PRIOR TO INSTALLING THE APPURTENANCE. ADDITIONAL PRODUCTS MAY BE REQUIRED TO MAINTAIN THE INTEGRITY OF THE SAFETY CLIMB. DURING INSTALLATION, TEMPORARY AND/OR PERMANENT PRECAUTIONARY MEASURES SHOULD BE TAKEN TO PRESERVE THE CLIMBING FACILITY AND/OR SAFETY CLIMB.
  - 2.2 UP TO 5.0° TAPER AVAILABLE ON MODELS THAT SUPPORT ADJUSTMENT.

- 3.0 MANUFACTURING/SPECIAL REQUIREMENTS
  - 3.1 TIGHTEN ALL BOLTS SECURING FLAT PLATES BY THE TURN-OF-NUT METHOD. TIGHTEN ALL U-BOLTS USING TURN-OF-NUT METHOD WITH ATTENTION TO LEAVE EQUAL DISTANCE AND EQUAL FORCE ON EACH LEG OF THE U-BOLT.


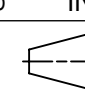
- 4.0 TEST
- 5.0 PACKAGING
  - 5.1 PACKAGING SHALL MEET ANDREW REQUIREMENTS PER DOCUMENT IS-PL-3005
  - 5.2 PRINTED DOCUMENT TO BE PLACED INSIDE POLYBAG AND THEN IN SHIPPING CONTAINER.
  - 5.3 EXTRA HARDWARE MAY BE SUPPLIED, BAGGED AND SHIPPED.

REVISIONS			
REV.	DESCRIPTION	DATE	APPROVED
A	INITIAL RELEASE	JL1183 13JUN24	CB1094 40195671CMO
B	UPDATED TIE BACK PIPE TO 2.375"; UPDATED TABLE 1 WEIGHT, EPA & INCLUDED PARTS; SHEET 3: ADDED AZIMUTH ADJUSTMENT NOTE	JL1183 02JAN25	YZ1080 40211726CMO





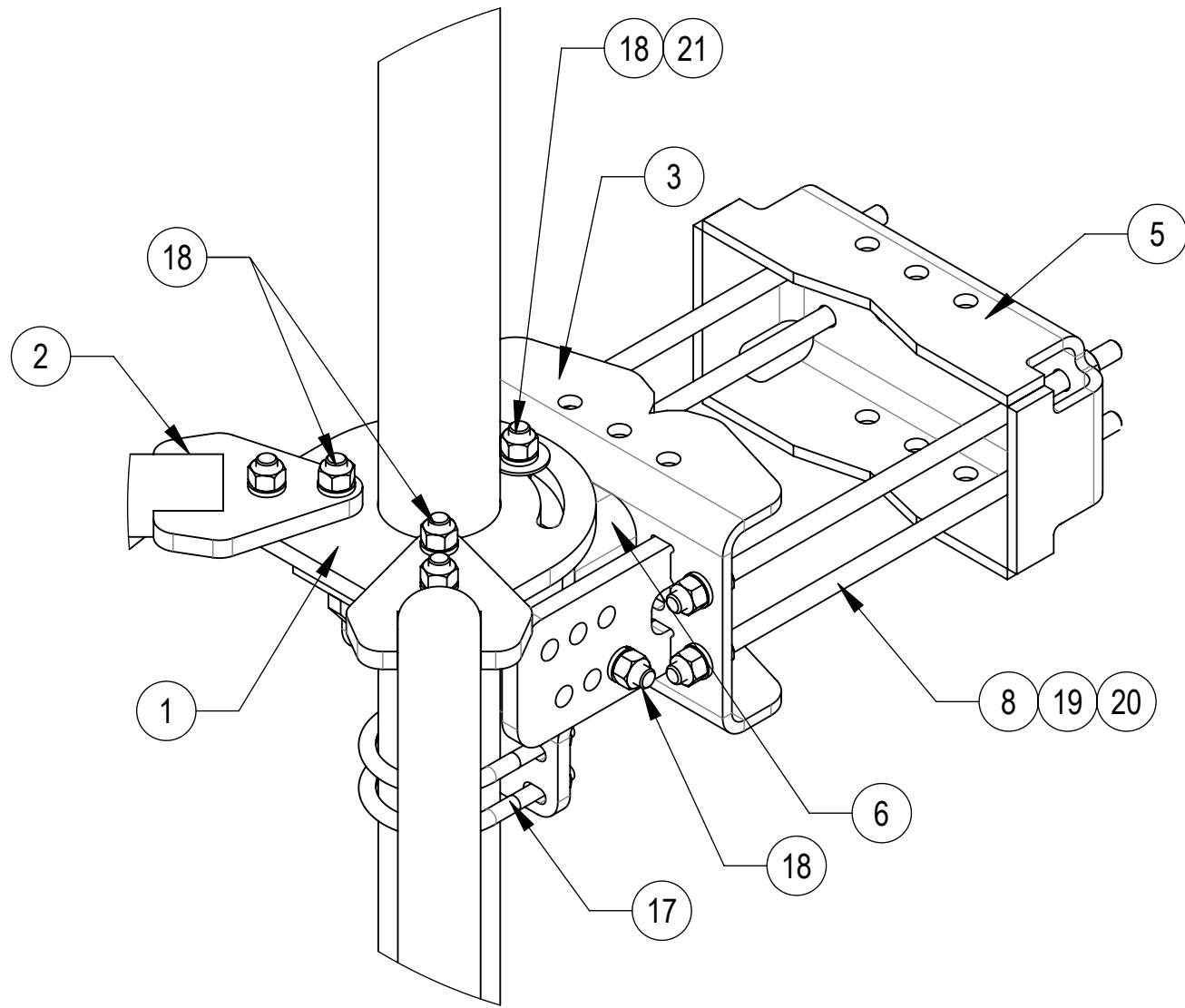
# ANDREW<sup>®</sup> an Amphenol company

TOLERANCES		SAP MATERIAL MASTER	
0 PLACE	X[X] ± 0.25[6.3]	2 PLACE	.XX[X] ± 0.06[1.5]
1 PLACE	.X[X] ± 0.12[3.0]	ANGLES	± 2°
FINISH		MATERIAL	
<small>UNLESS OTHERWISE SPECIFIED DIMENSIONS ARE IN INCHES INTERPRET PER ANSI Y 14.5M-1994</small>		NAME	DATE
		CE JL1183	05FEB24
		RW LL1090	06/11/2025
		AD YMENG	06/11/2025
		RE YMENG	06/11/2025
ECN 40211726CMO		TITLE	
		<b>SFG22RHDX SECTOR FRAME SERIES</b>	
SCALE		DOCUMENT NO.	
<b>1:16</b>		<b>SFG22RHDX</b>	
SIZE	Auth Group	INSL	MODEL
<b>C</b>			VERSION
			STATUS
			REVISION
			VERSION
			STATUS
			REVISION
			DRAWING
			VERSION
			STATUS
			REVISION
			SHEET
			1 OF 12

DENSITY		lbs/in <sup>3</sup>
MASS	475.03	lbs
VOLUME	6099.37	in <sup>3</sup>
SURFACE AREA	28341.16	in <sup>2</sup>
HEIGHT	120"	
LENGTH	180"	
WIDTH	120"	

Confidential



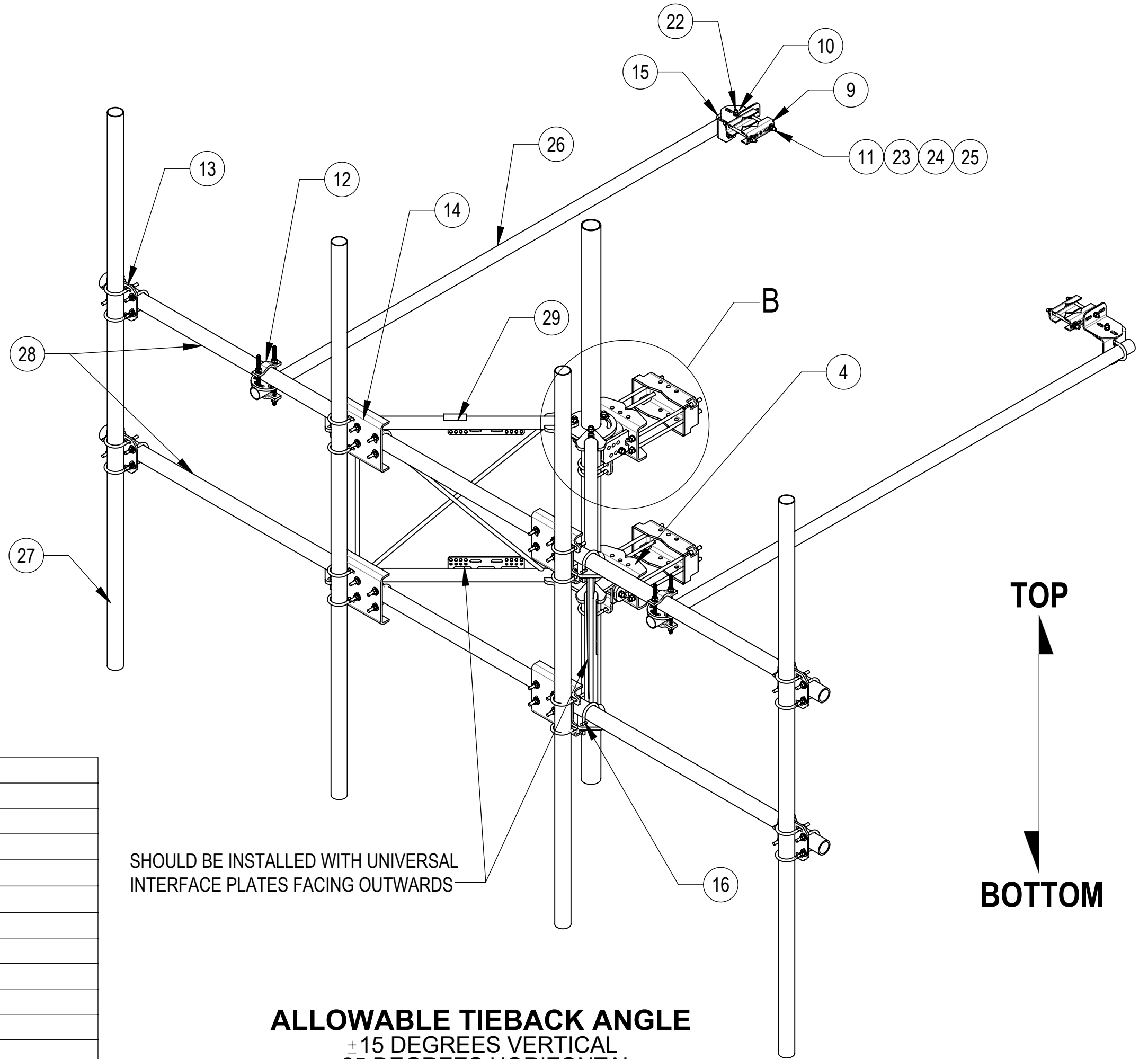


**DETAIL B**  
SCALE 1 : 5

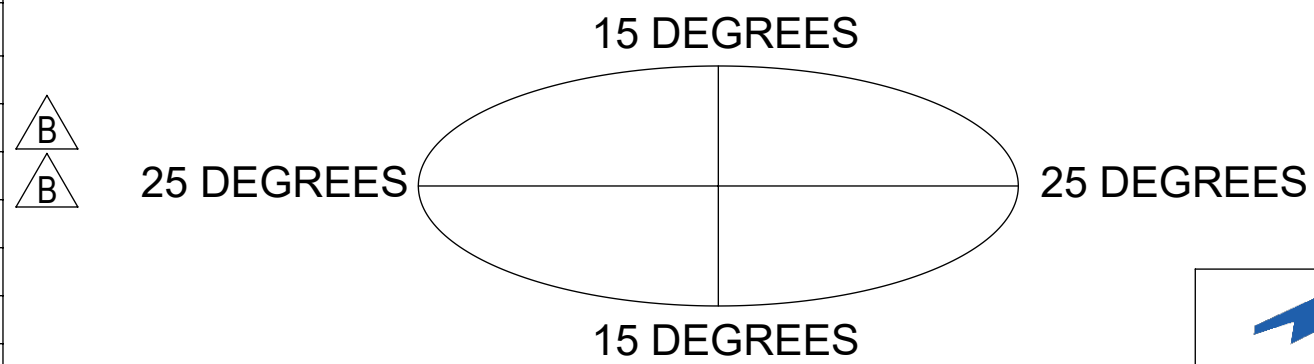
**SFG22RHDX-15-4-120 SHOWN FOR REFERENCE**  
**(NOT ALL CONFIGURATIONS INCLUDE ALL ITEMS, SEE NOTES IN TABLE)**



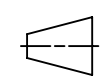
COMPONENT PART NUMBERS PROVIDED FOR ASSEMBLY PURPOSES;  
INDIVIDUAL COMPONENTS MAY BE SHIPPED AS PARTS WITHIN AN INCLUDED KIT.

ITEM	PART NO.	DESCRIPTION	QTY.	WEIGHT	NOTE NO.
1	SFG2204	WELDMENT, BACK VERTICAL ARM MOUNT	1	97.29 LBS	
2	SFG2292-00	WELDMEN, V-ARM, SECTOR FRAME 22	2	49.69 LBS	
3	SFG2380	WELDMEN, HD, TOP TAPER BRACKET	1	22.78 LBS	
4	SFG2381	WELDMEN, HD, LOWER TOWER LEG BRACKET	1	17.42 LBS	
5	SFG2289	G2 RRU BACK CLAMP, HD	2	18.65 LBS	
6	SFG2386	WELDMEN, SFG2 AZIMUTH BRACKET	1	10.07 LBS	
7	SFG2397-00	WELDMEN, G23 AZIMUTH BRACKET	1	7.94 LBS	
8	MT-382-18	5/8" X 18" THREADED ROD	8	1.43 LBS	
9	SAB01	FORMED CLAMP	4	1.35 LBS	
10	XAU01	ANGLE, CROSSOVER, 1.9-3.5" X 1.9-3.5" OD	4	2.98 LBS	
11	MT-379-8	1/2" X 8" GALV THREADED ROD	4	0.45 LBS	
12	XP-R	CROSSOVER PLATE, ROUND, UP TO 3.5" OD	2	6.20 LBS	
13	XP-2525	CROSSOVER PLATE KIT, 2-7/8 OD X 2-7/8 OD	4	8.37 LBS	PART NO. AND QTY SEE INDIVIDUAL DRAWING
14	XP-2525-OFF	OFFSET CO PLATE KIT, 2-7/8ODX2-7/8OD	4	17.91 LBS	PART NO. AND QTY SEE INDIVIDUAL DRAWING
15	GUB-4240	1/2" X 2-1/2" X 4" GALV U-BOLT	2	0.56 LBS	
16	GUB-4352	1/2" X 3" X 5-1/4" GALV U-BOLT	4	0.71 LBS	
17	GUB-4355	1/2" X 3-5/8" X 5" GALV U-BOLT	3	0.71 LBS	
18	GB-05225	5/8" X 2-1/4" GALV BOLT KIT	14	0.28 LBS	
19	GN-05	5/8" GALV HEX NUT	24	0.08 LBS	
20	GWL-05	5/8" GALV LOCK WASHER	16	0.03 LBS	
21	GWF-05	5/8" GALV FLAT WASHER, 1.70D	2	0.06 LBS	
22	GB-04145	1/2" X 1-1/2" GALV BOLT KIT	2	0.13 LBS	
23	GN-04	1/2" GALV HEX NUT	10	0.04 LBS	
24	GWL-04	1/2" GALV LOCK WASHER	10	0.01 LBS	
25	GWF-04	1/2" GALV FLAT WASHER	8	0.04 LBS	
26	MT-651-120	PIPE, 2.375"OD X 120"	2	29.07 LBS	
27	MT546120120	PIPE, 2.875"OD X 120"	4	35.44 LBS	PART NO. AND QTY SEE INDIVIDUAL DRAWING
28	MT546180276	PIPE, 2.875"OD X 180"	2	115.33 LBS	PART NO. SEE INDIVIDUAL DRAWING
29	SFG2295	LABEL, SFG23RHDX	1	0.03 LBS	



**ALLOWABLE TIEBACK ANGLE**  
± 15 DEGREES VERTICAL  
± 25 DEGREES HORIZONTAL

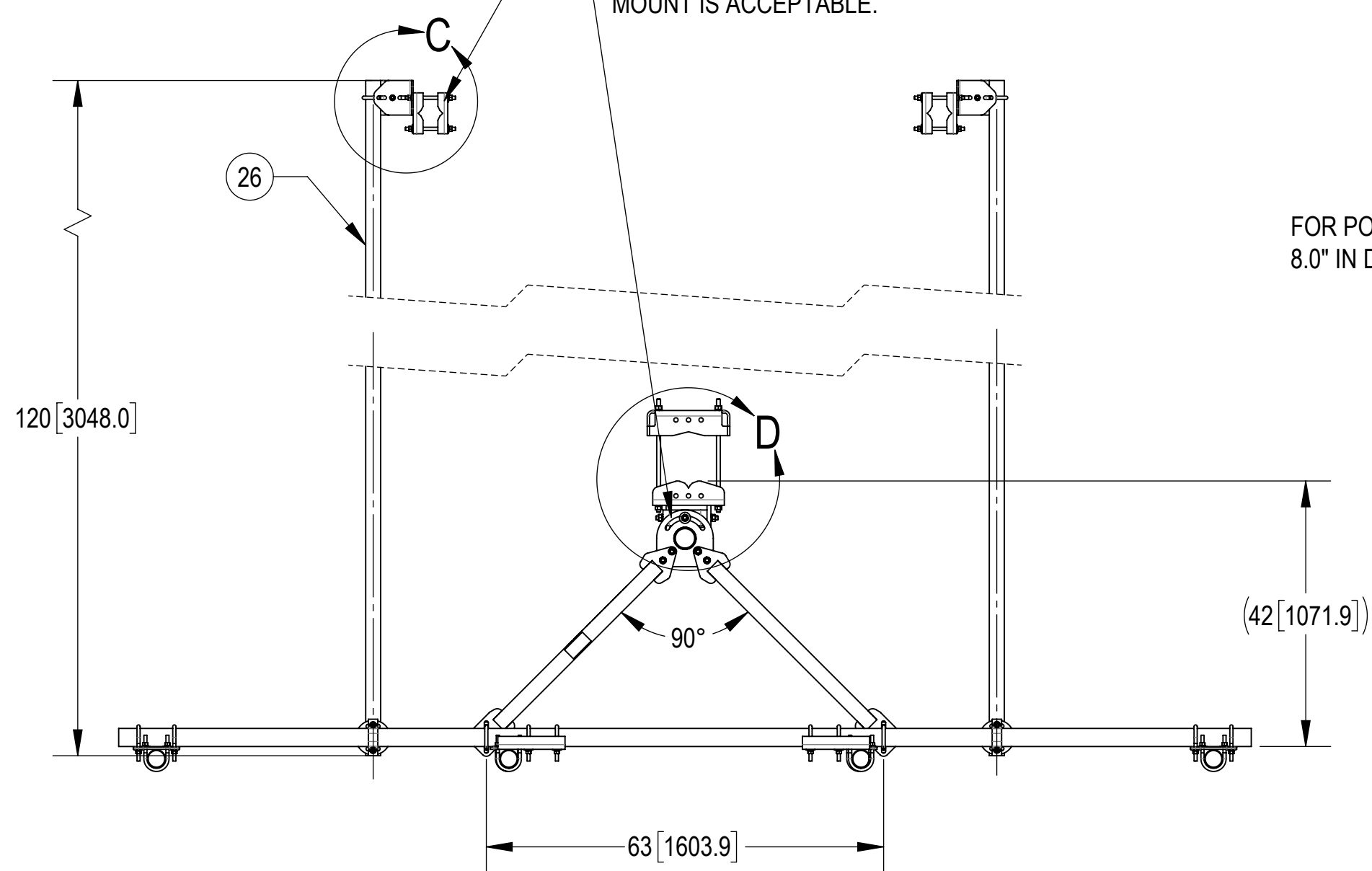


 <b>ANDREW</b> an Amphenol company				
TITLE SFG22RHDX SECTOR FRAME SERIES				
SIZE <b>C</b>	SCALE <b>1:16</b>	DOCUMENT NO. SFG22RHDX		
 		DRAWING		SHEET 3 OF 12
		VERSION 01	STATUS RE	

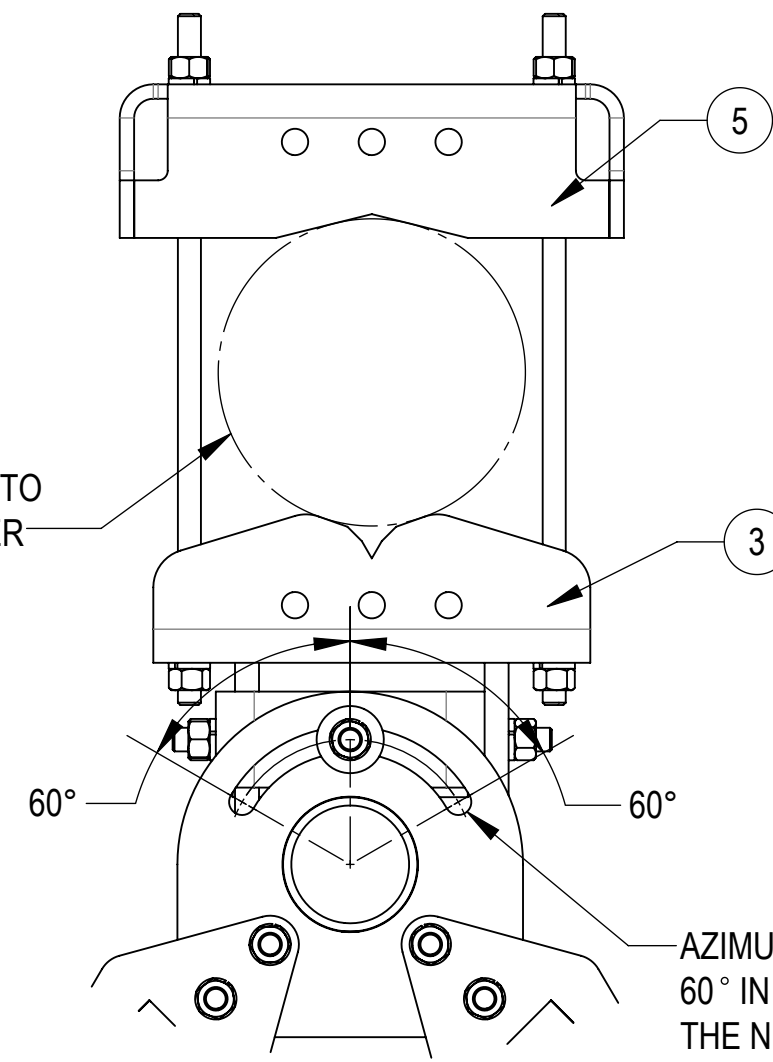
Confidential



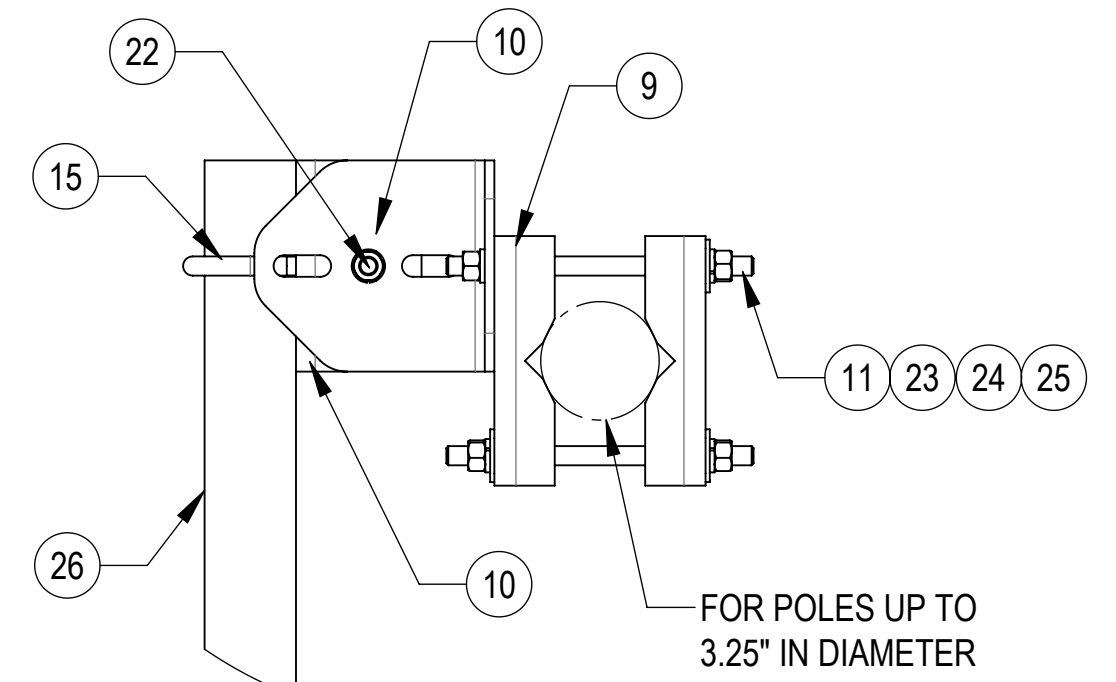
TIEBACK MUST BE CONNECTED TO A RIGID MEMBER THAT PROVIDES ADEQUATE SUPPORT WITHIN THE LIMITS NOTED IN THE TIEBACK ANGLE RANGE DETAIL. UNLESS APPROVED BY ENGINEER OF RECORD. SPINE STEM OF NEIGHBORING MOUNT IS ACCEPTABLE.



FOR POLES UP TO 8.0" IN DIAMETER



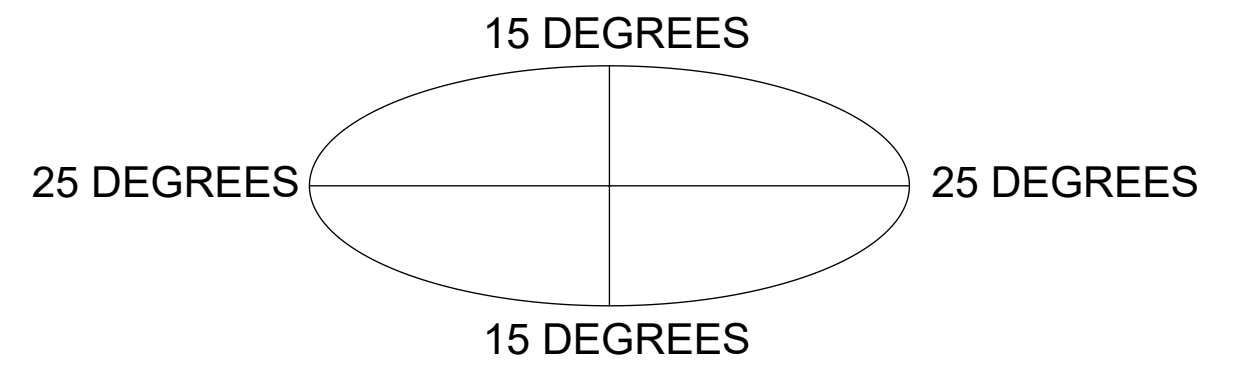
**DETAIL D**  
SCALE 1 : 5



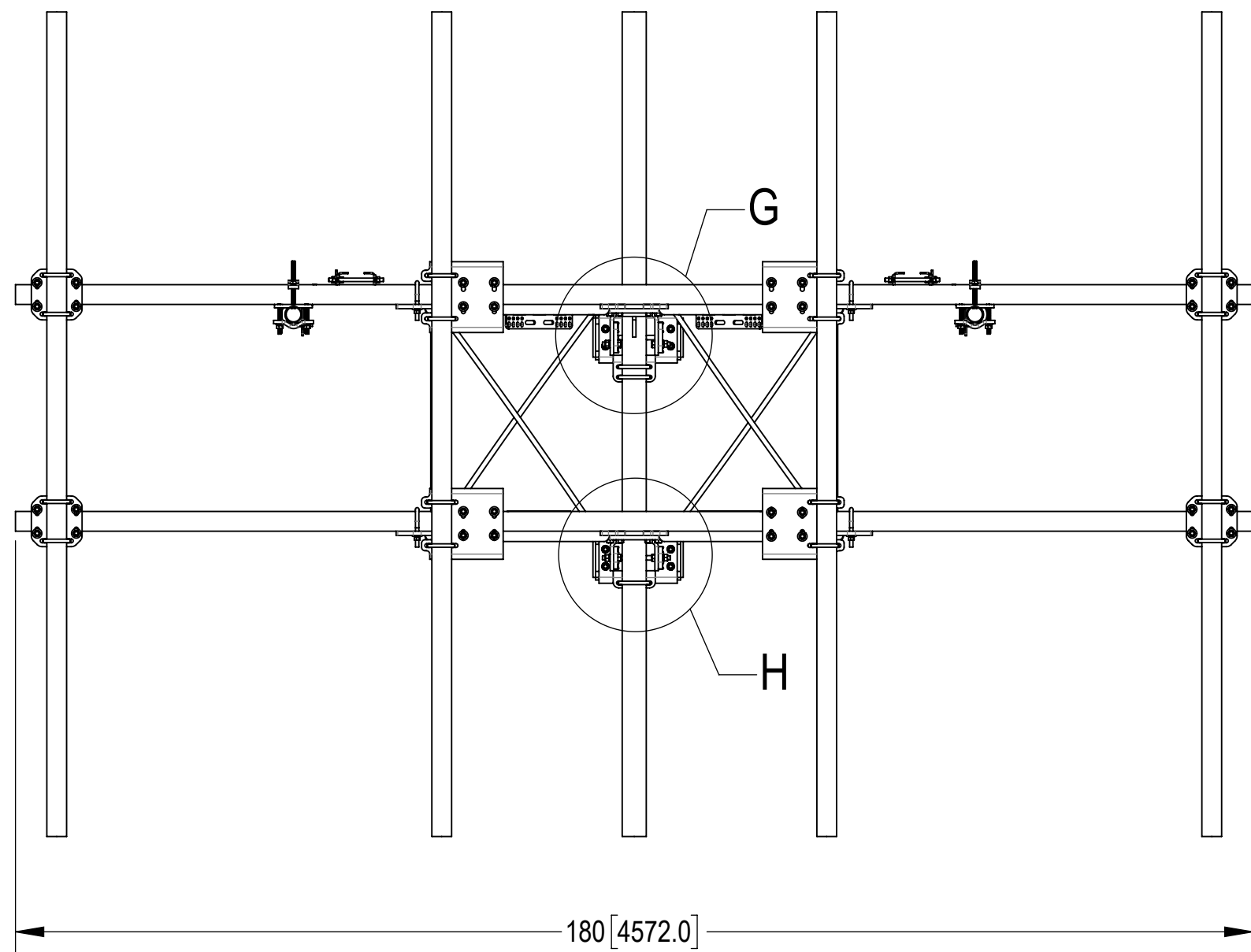
**DETAIL C**  
SCALE 1 : 5

**AZIMUTH ADJUSTMENT RANGE:**  
60° IN EACH DIRECTION FROM THE NOMINAL CENTER LINE

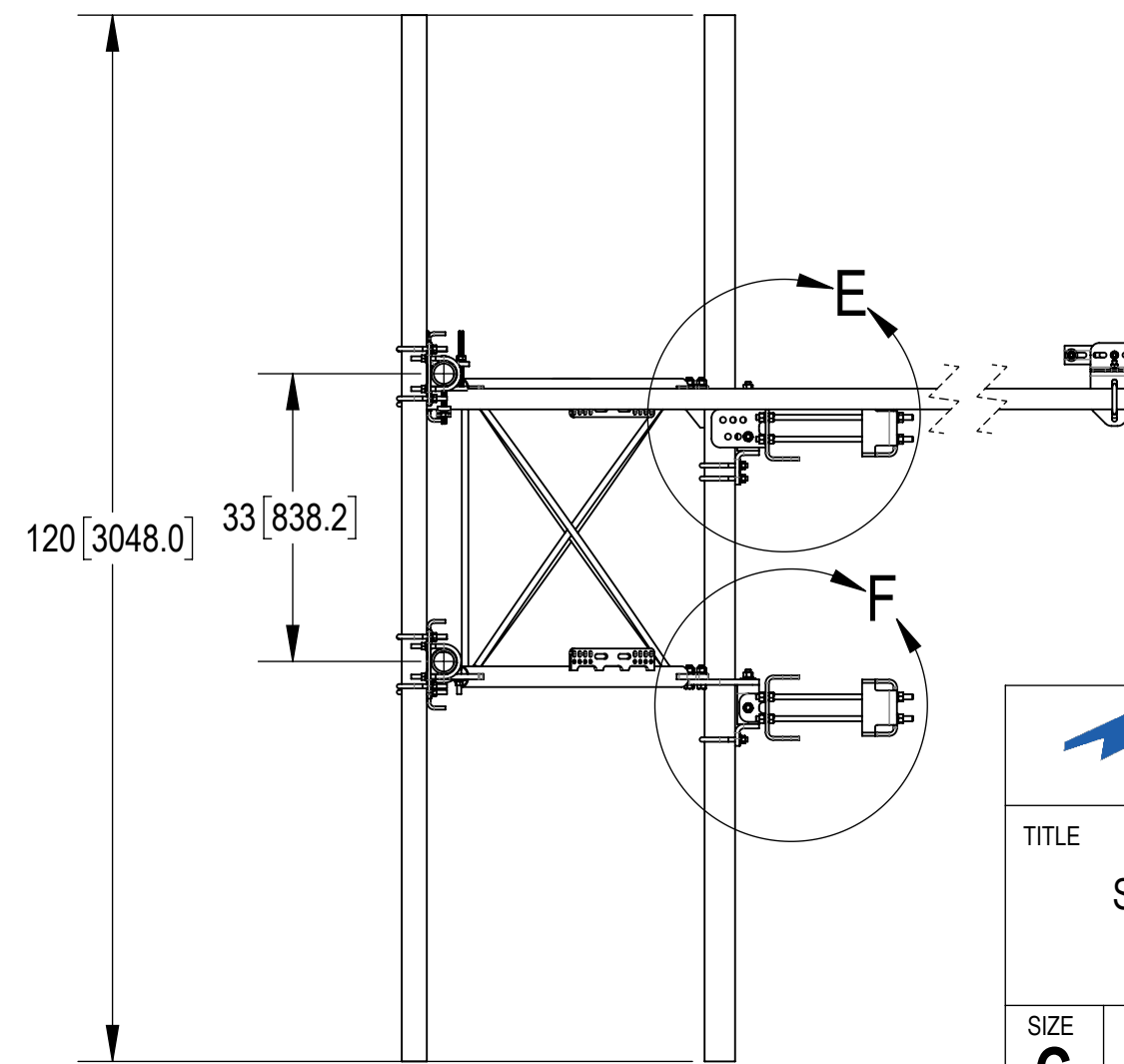
**ALLOWABLE TIEBACK ANGLE**  
±15 DEGREES VERTICAL  
±25 DEGREES HORIZONTAL



**SFG22RHDH-15-4-120 SHOWN FOR REFERENCE**  
**(NOT ALL CONFIGURATIONS INCLUDE ALL ITEMS,**  
**SEE NOTES IN TABLE ON PAGE 3)**



**TOP**  
**BOTTOM**



**ANDREW** an Amphenol company

TITLE  
SFG22RHDH SECTOR FRAME SERIES

SIZE <b>C</b>	SCALE <b>1:20</b>	DOCUMENT NO. SFG22RHDH		
DRAWING		VERSION	STATUS	REVISION
		01	RE	B
SHEET				4 OF 12

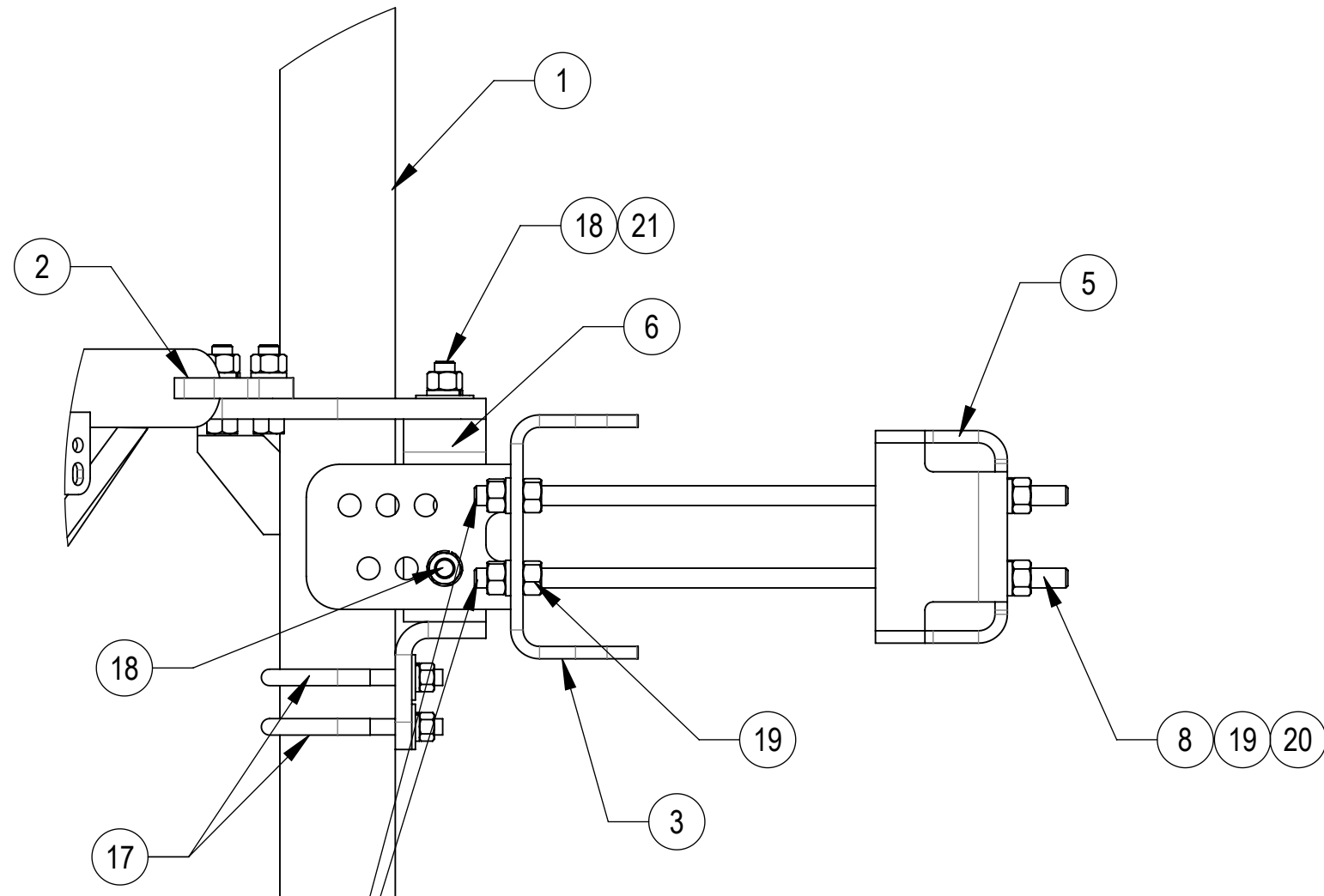
Confidential

4

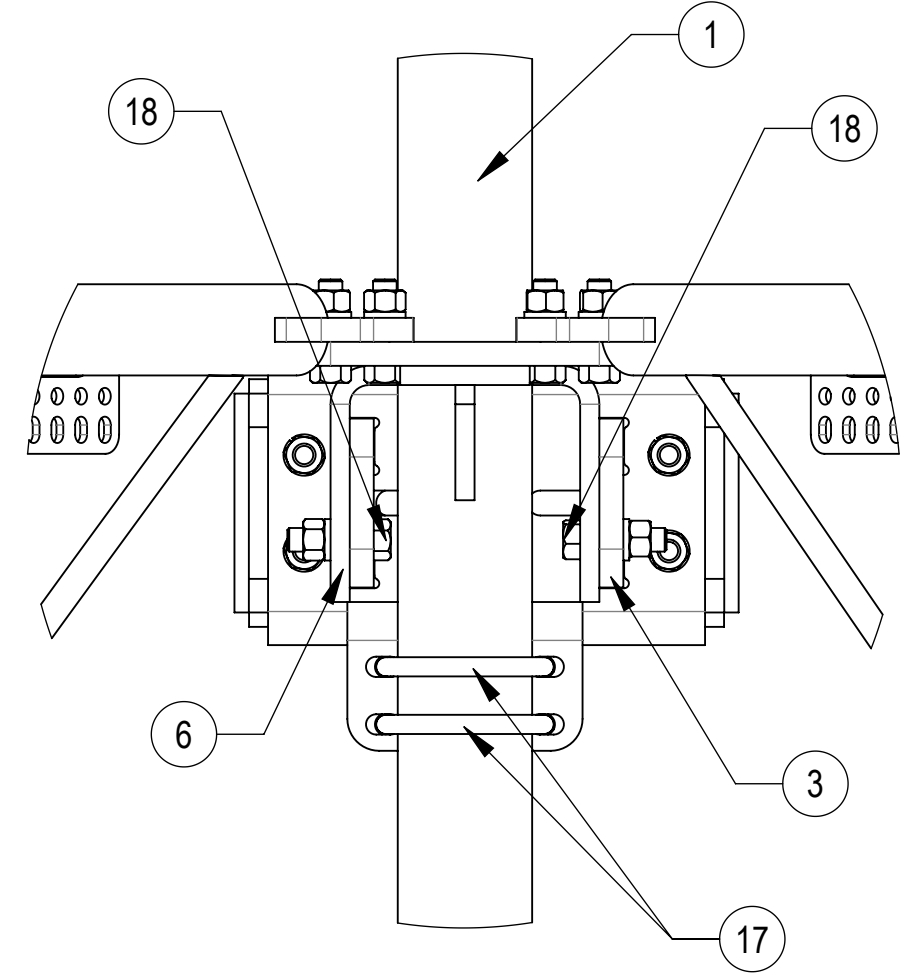
3

2

1

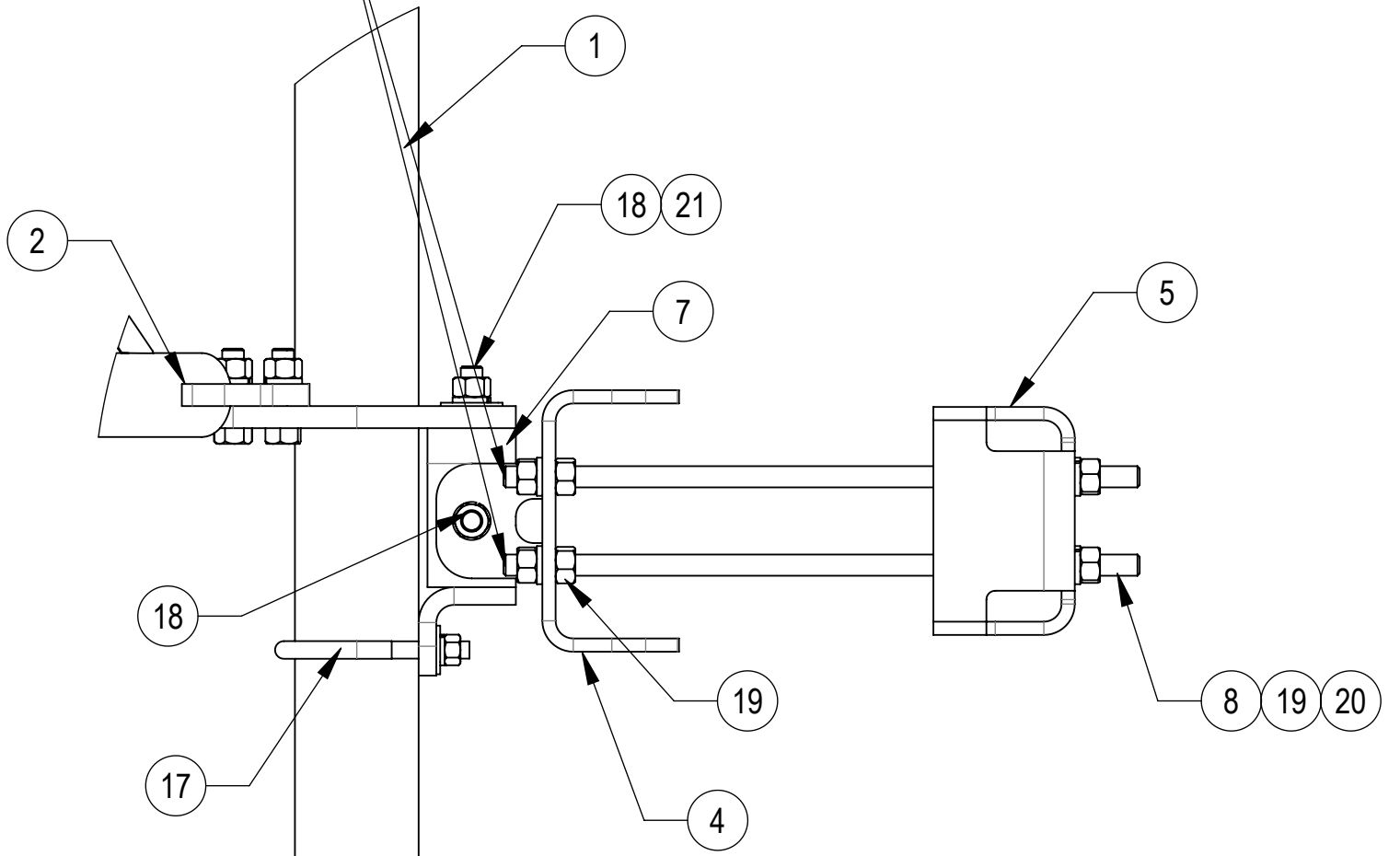


**DETAIL E**  
SCALE 1 : 5

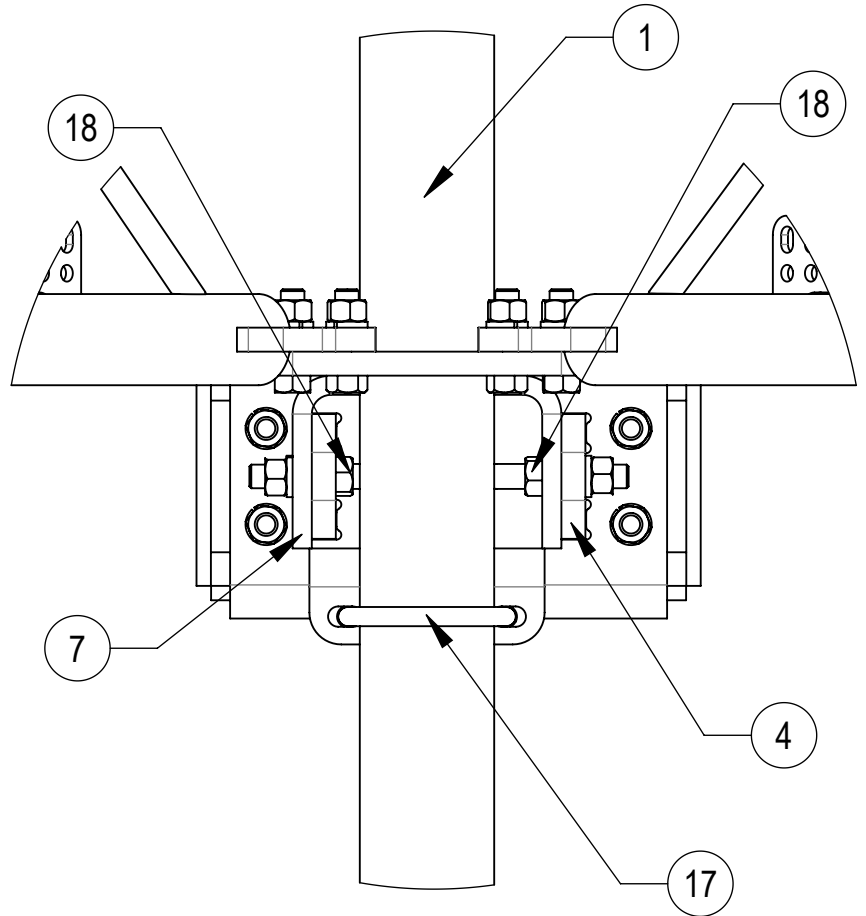


**DETAIL G**  
SCALE 1 : 5

THE THREADED ROD CAN ONLY EXPOSE 4 TO 7 THREADS ON ONE SIDE OF THE BRACKET, WHICH IS TO PREVENT INTERFERENCE WITH THE SIDE BOLTS



**DETAIL F**  
SCALE 1 : 5



**DETAIL H**  
SCALE 1 : 5



TITLE				
SFG22RHDX SECTOR FRAME SERIES				
SIZE	SCALE	DOCUMENT NO.		
<b>C</b>	<b>1:20</b>	SFG22RHDX		
		DRAWING		SHEET
		VERSION	STATUS	REVISION
		01	RE	<b>B</b>
				5 OF 12

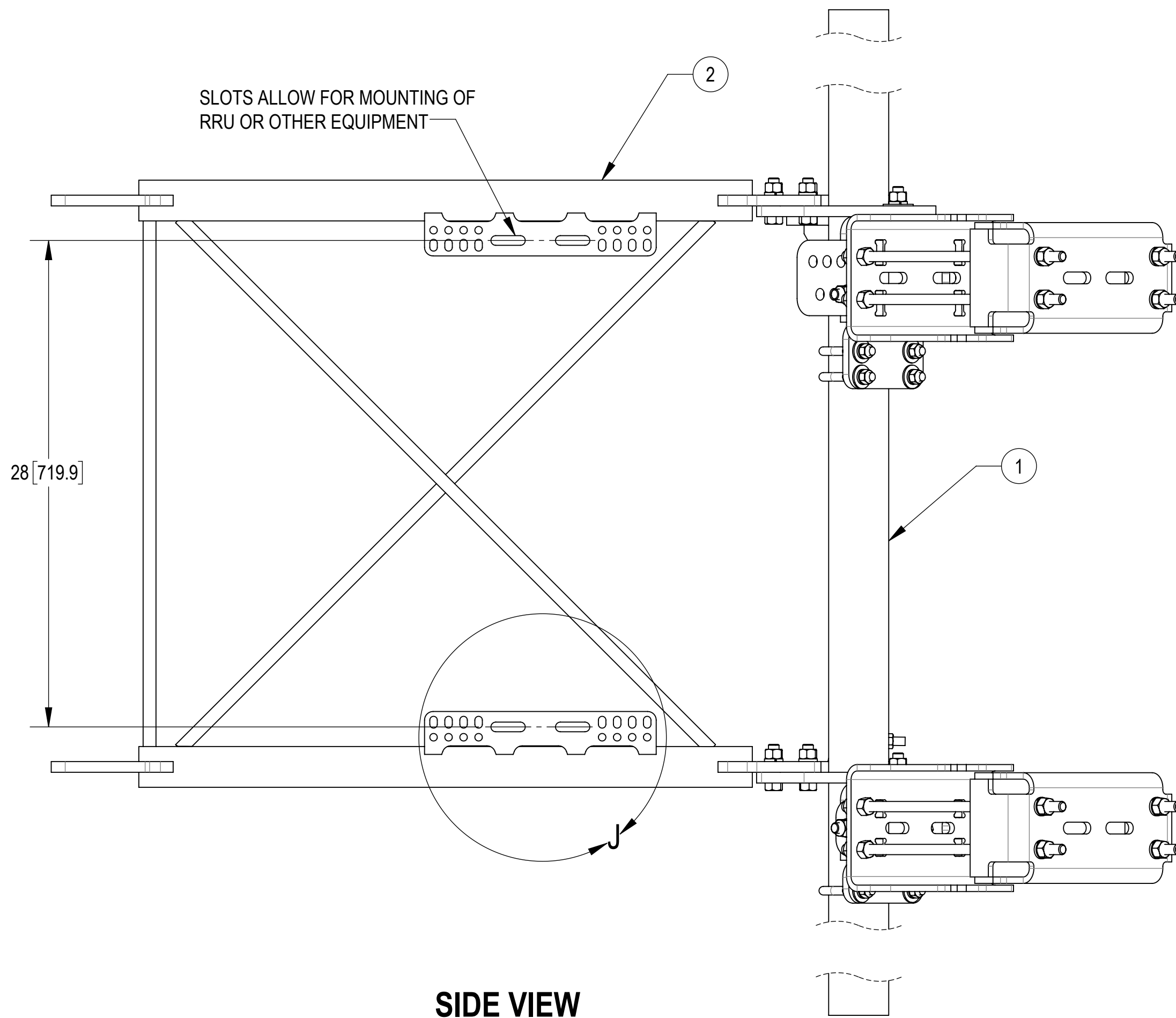
Confidential

4

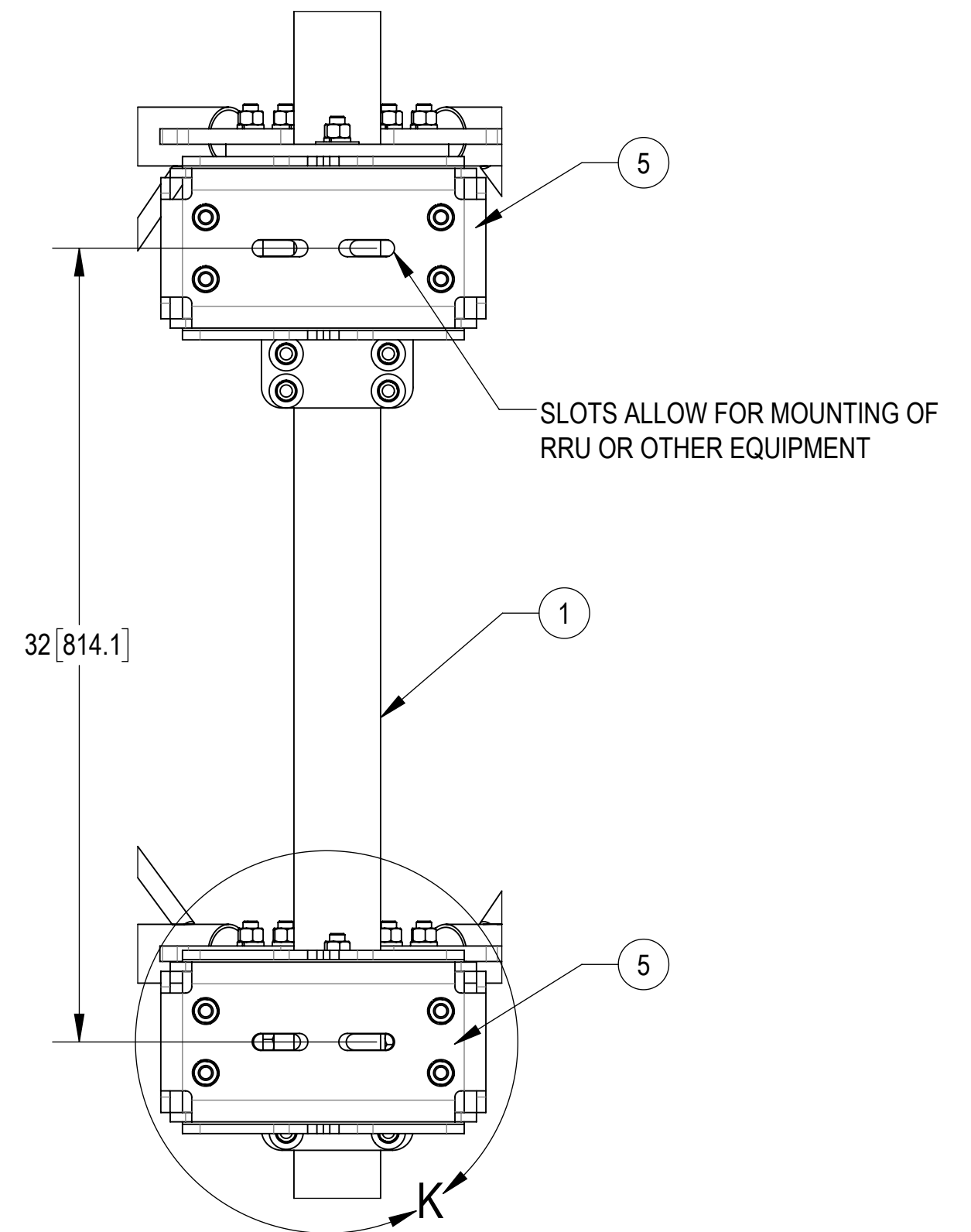
3

2

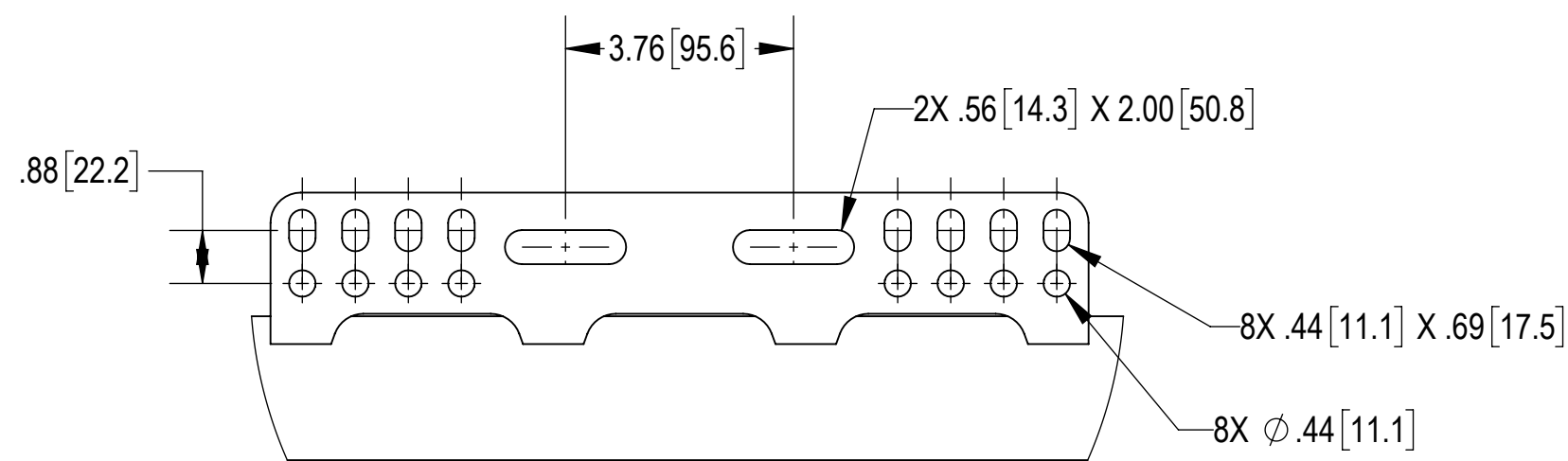
1



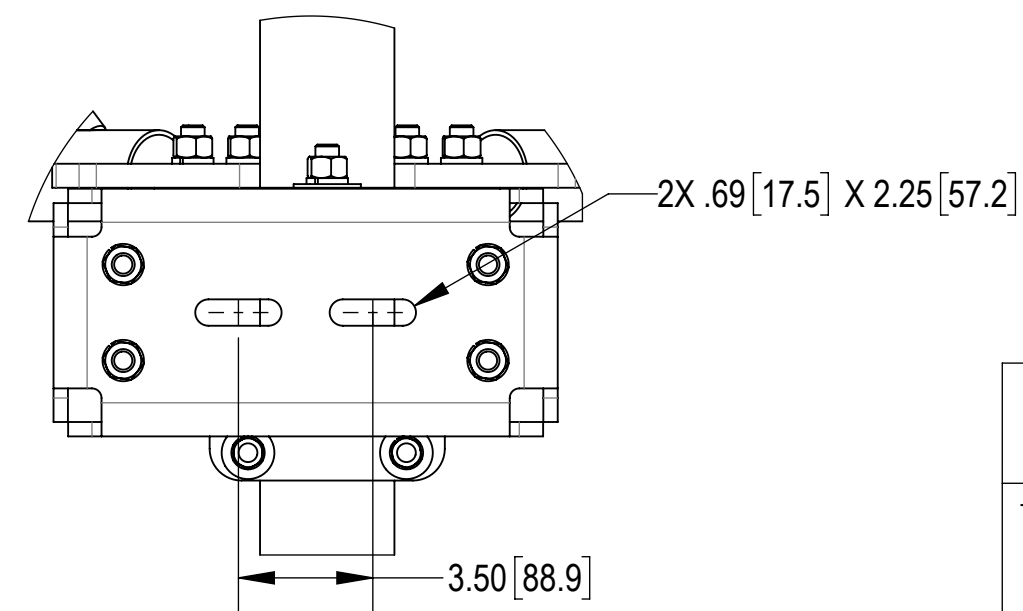
**SIDE VIEW**





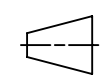
**BACK CROP VIEW**



**DETAIL J**  
SCALE 1 : 3



**DETAIL K**  
SCALE 1 : 5

 <b>ANDREW</b> an Amphenol company				
TITLE SFG22RHDX SECTOR FRAME SERIES				
SIZE <b>C</b>	SCALE <b>1:6</b>	DOCUMENT NO. SFG22RHDX		
 		DRAWING		SHEET
		VERSION 01	STATUS RE	REVISION B

Confidential

4

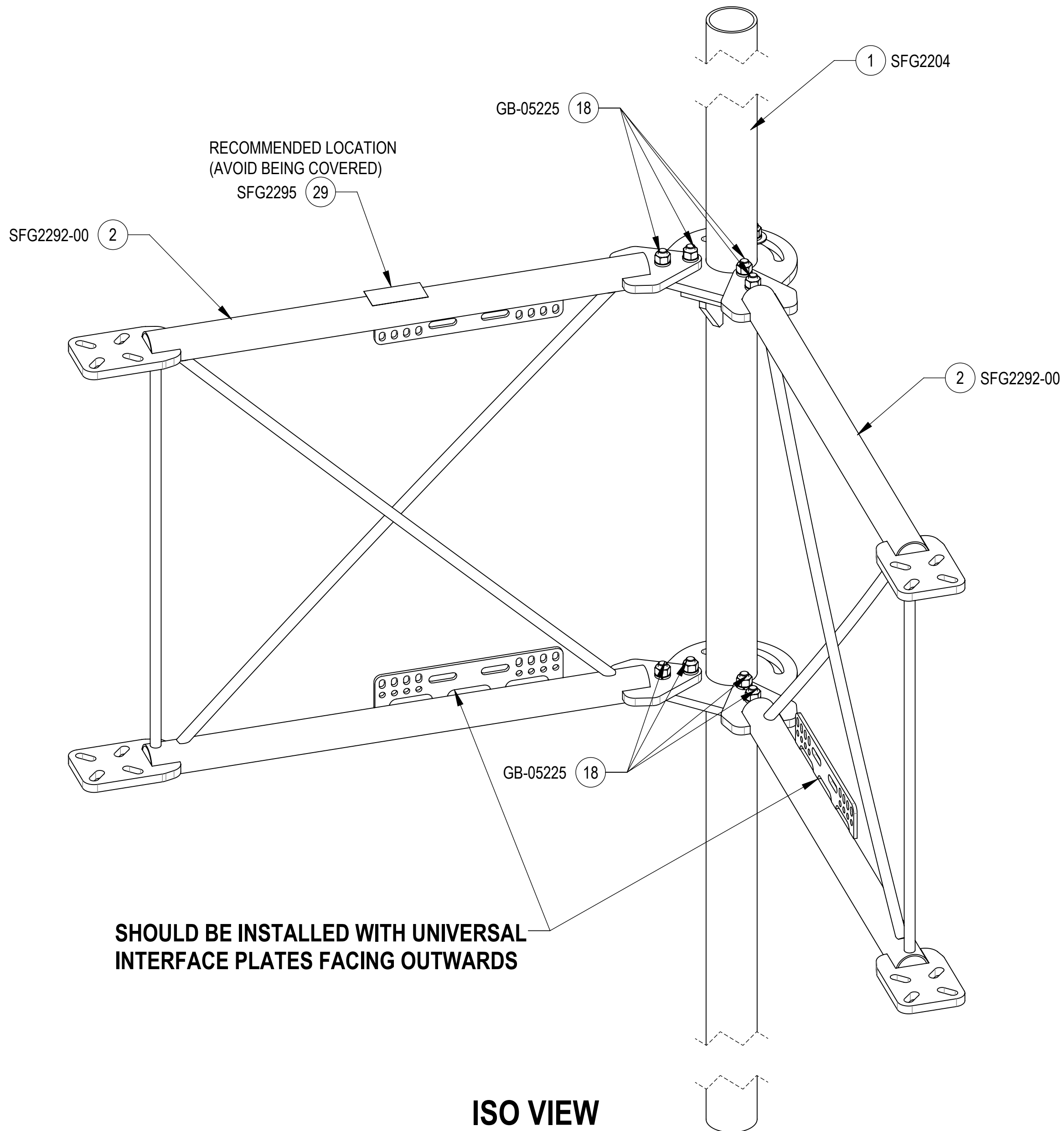
3

2

1

**INSTALLATION SEQUENCE - REFERENCE ONLY**

**STEP 1: ATTACH STANDOFF ARMS (SFG2292-00) TO BACK VERTICAL ARM MOUNT (SFG2204) USING BOLT KITS (GB-05225). ATTACH LABEL (SFG2295) ON TOP OF STANDOFF ARMS (SFG2292-00). (WIPE GALVANIZED SURFACE WITH ALCOHOL CLEANER BEFORE APPLYING LABEL)**



TITLE  
SFG22RHDx SECTOR FRAME SERIES

SIZE <b>C</b>	SCALE <b>1:6</b>	DOCUMENT NO. SFG22RHDx
------------------	---------------------	---------------------------

	DRAWING			SHEET 7 OF 12
	VERSION 01	STATUS RE	REVISION B	

Confidential

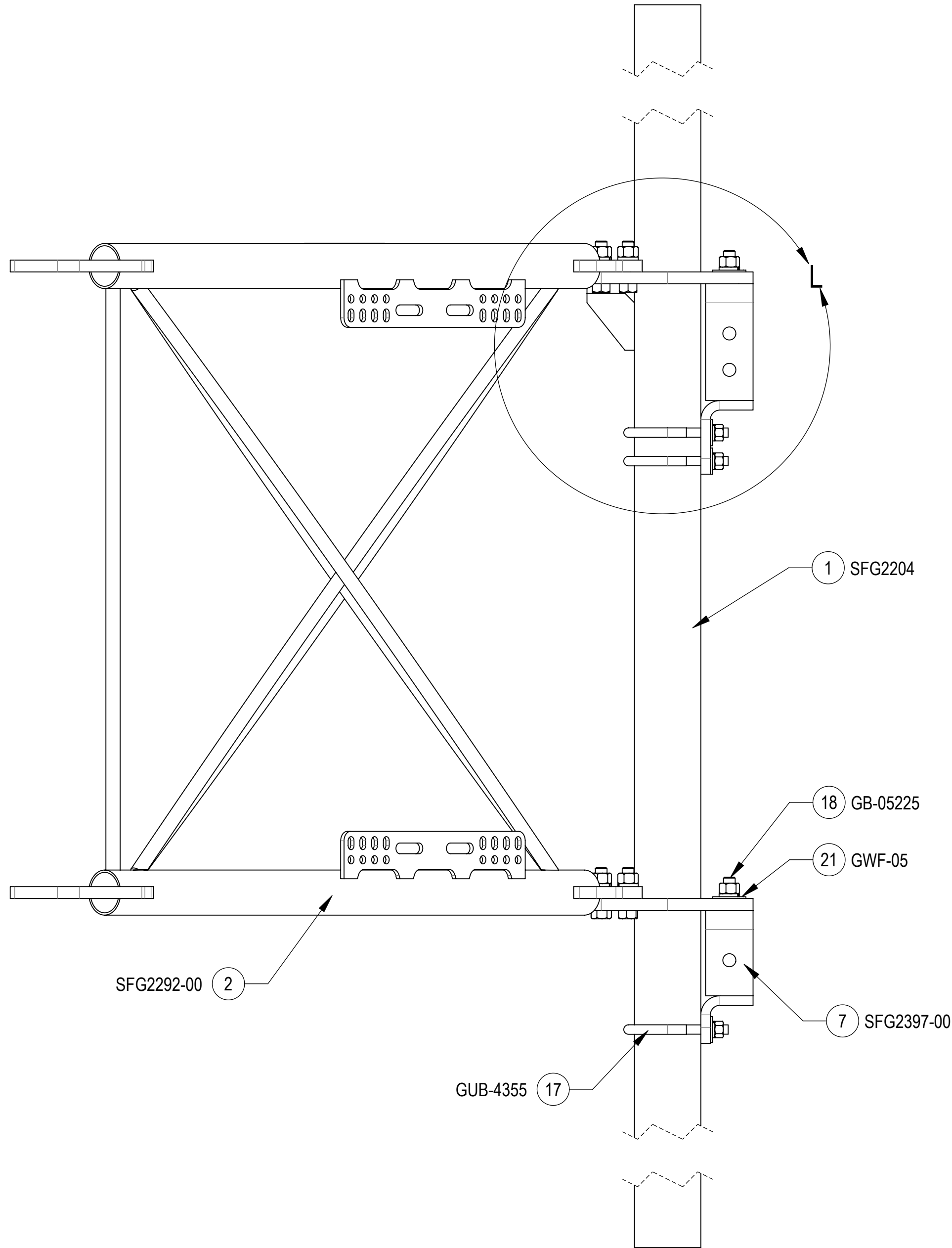
4

3

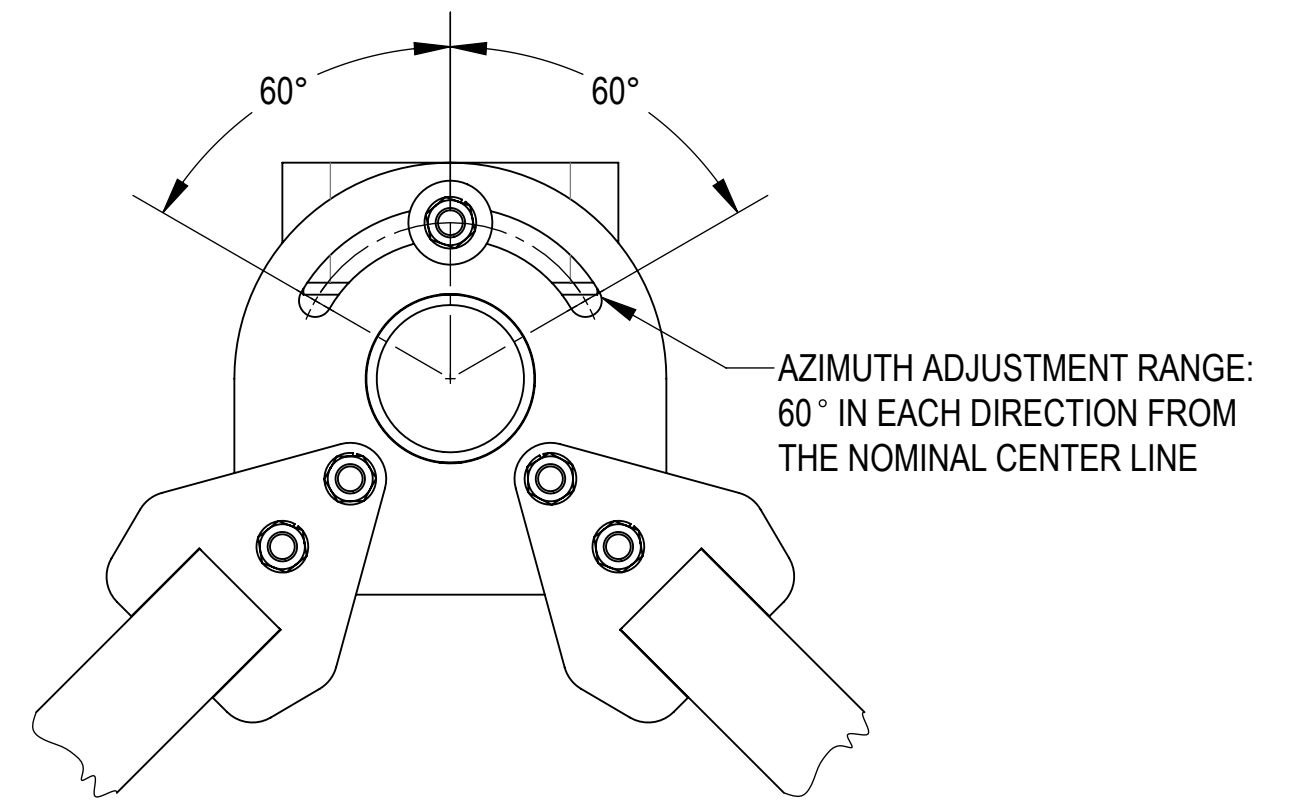
2

1

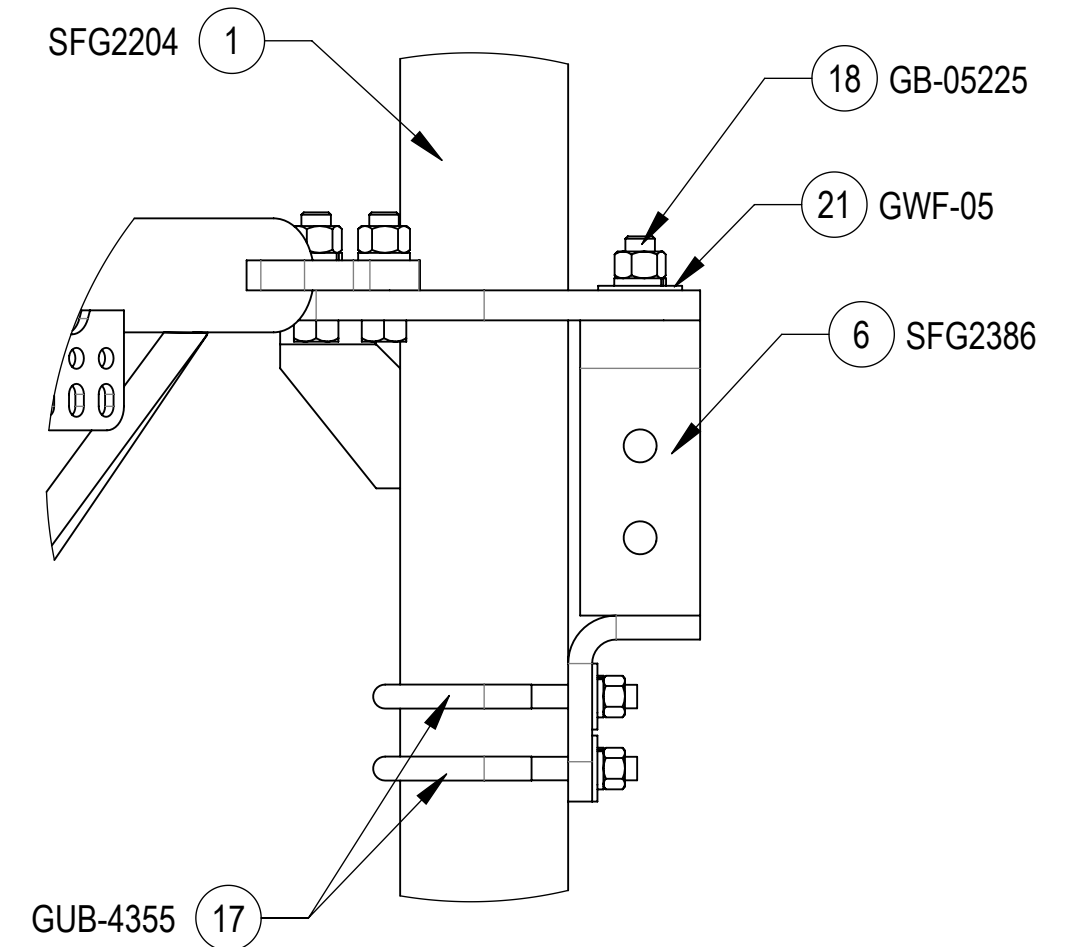
**STEP 2: AT TOP, ATTACH AZIMUTH/TAPER BRACKET (SFG2386) TO BACK VERTICAL ARM MOUNT (SFG2204) USING BOLT KIT (GB-05225), FLAT WASHER (GWF-05) AND U-BOLT KITS (GUB-4355); AT BOTTOM, ATTACH AZIMUTH/TAPER BRACKET (SFG2397-00) TO BACK VERTICAL ARM MOUNT (SFG2204) USING BOLT KIT (GB-05225), FLAT WASHER (GWF-05) AND U-BOLT KITS (GUB-4355).**



**SIDE VIEW**



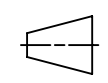


**TOP CROP VIEW**



**DETAIL L**  
SCALE 1 : 4

**TOP**  
↑  
**BOTTOM**  
↓

 <b>ANDREW</b> an Amphenol company				
TITLE SFG22RDX SECTOR FRAME SERIES				
SIZE <b>C</b>	SCALE <b>1:6</b>	DOCUMENT NO. SFG22RDX		
 		DRAWING		SHEET 8 OF 12
		VERSION 01	STATUS RE	

Confidential



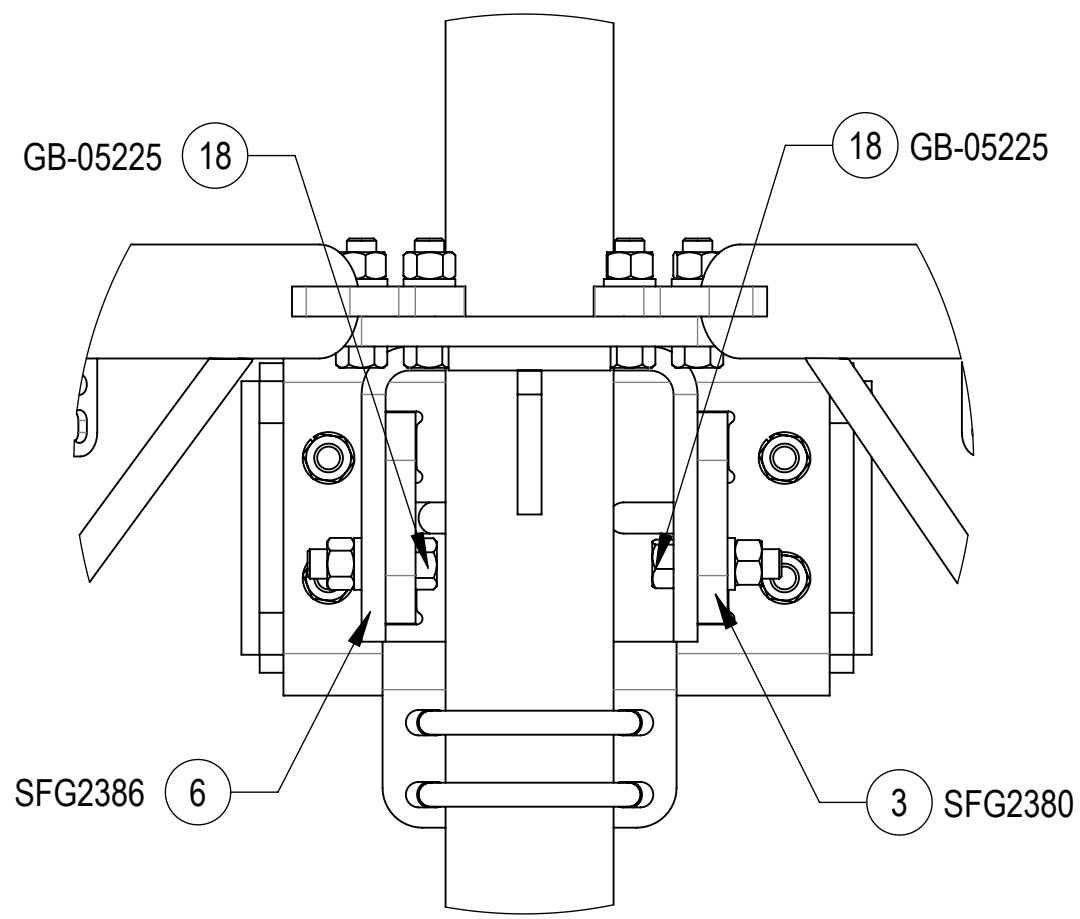
4

3

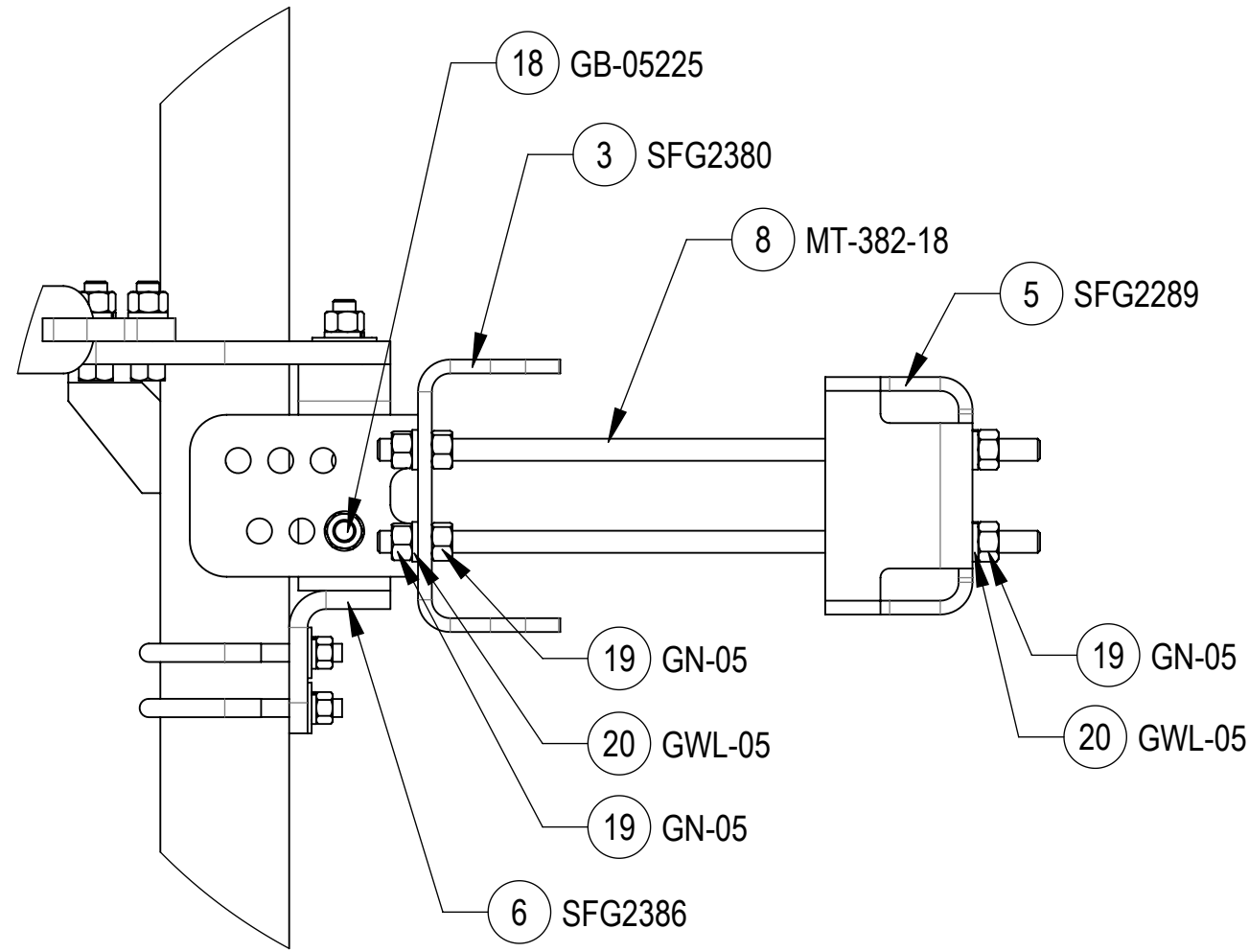
2

1

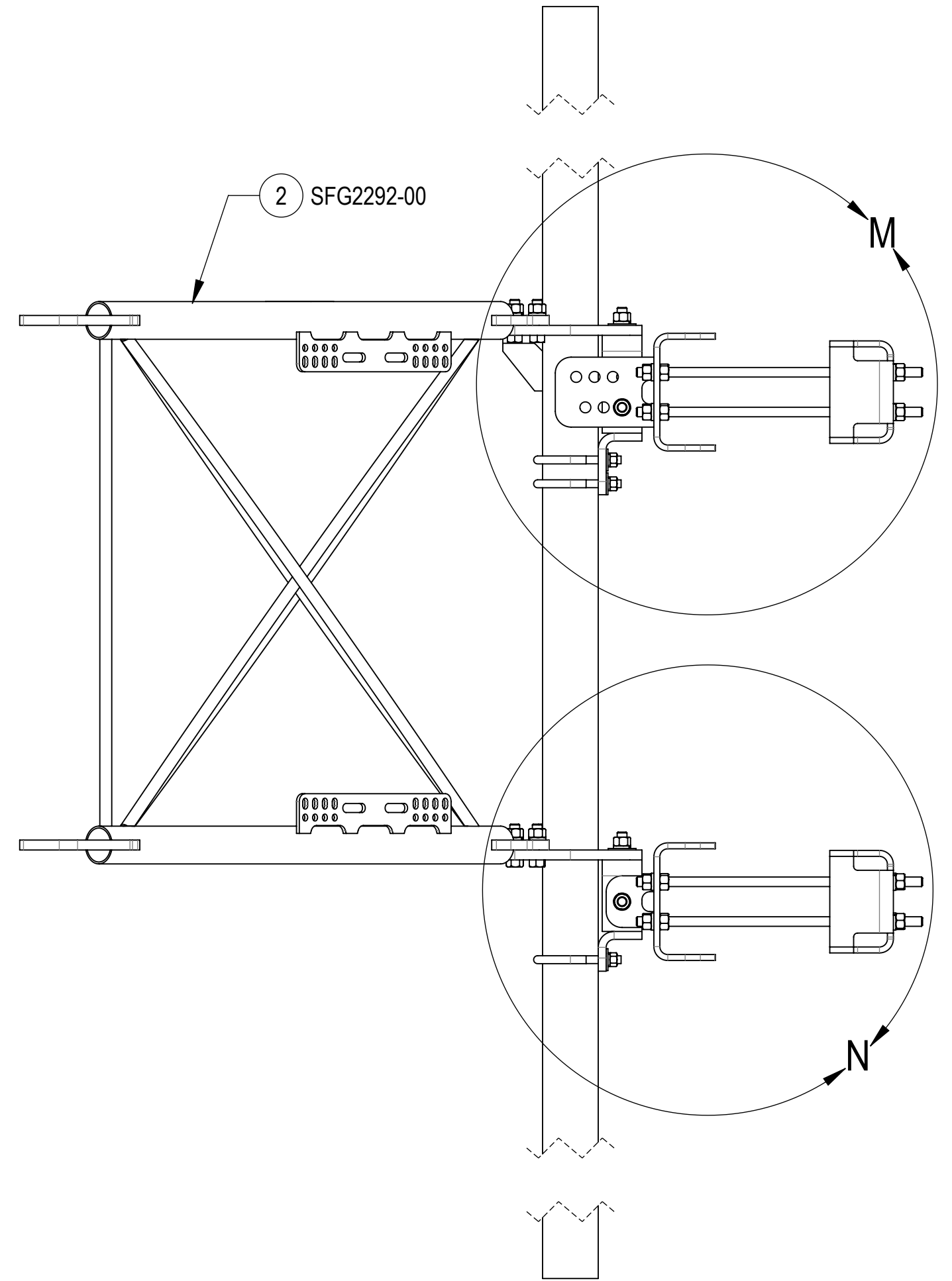
**STEP 3: AT TOP, ATTACH TOP TAPER BRACKET (SFG2380) TO AZIMUTH/TAPER BRACKET (SFG2386) USING BOLT KITS (GB-05225);  
AT BOTTOM, ATTACH LOWER TOWER LEG BRACKET (SFG2381) TO AZIMUTH/TAPER BRACKET (SFG2397-00) USING BOLT KITS (GB-05225).**



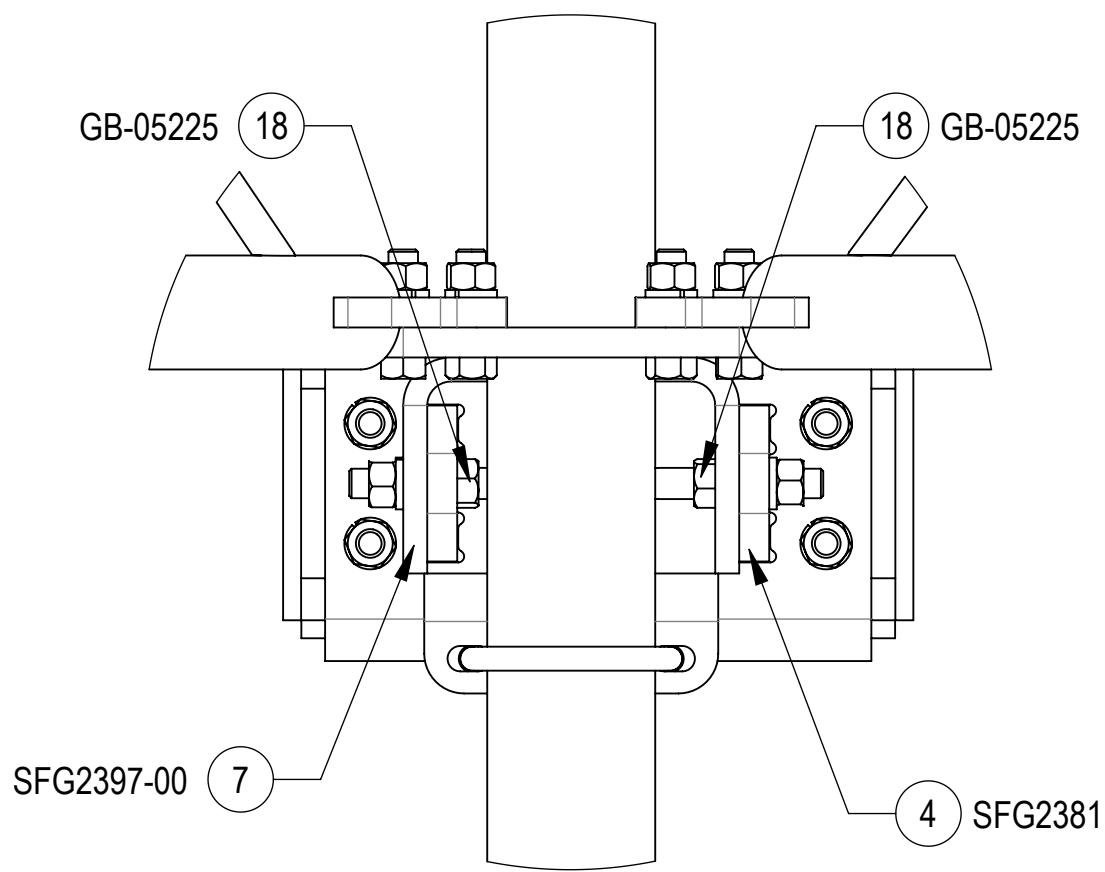
**DETAIL ISO TOP ROTATED VIEW**  
SCALE 1 : 4



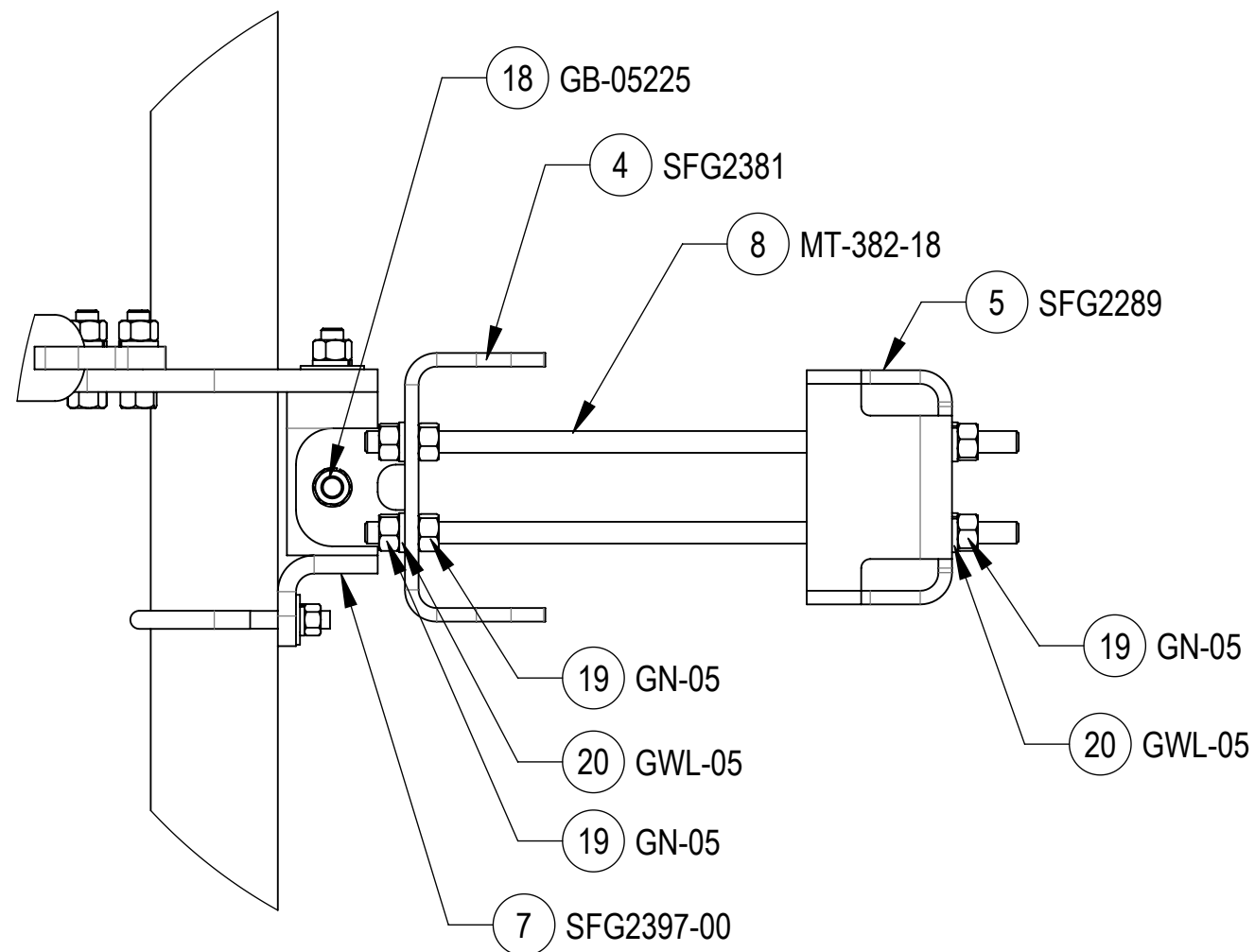
**DETAIL M**  
SCALE 1 : 5



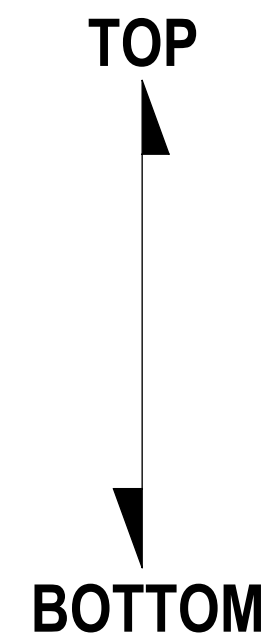
**SIDE VIEW**



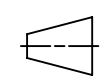


**DETAIL ISO BOTTOM ROTATED VIEW**  
SCALE 1 : 4



**DETAIL N**  
SCALE 1 : 5



 <b>ANDREW</b> an Amphenol company				
TITLE SFG22RHDX SECTOR FRAME SERIES				
SIZE <b>C</b>	SCALE <b>1:7</b>	DOCUMENT NO. SFG22RHDX		
 		DRAWING		SHEET 9 OF 12
		VERSION 01	STATUS RE	

Confidential

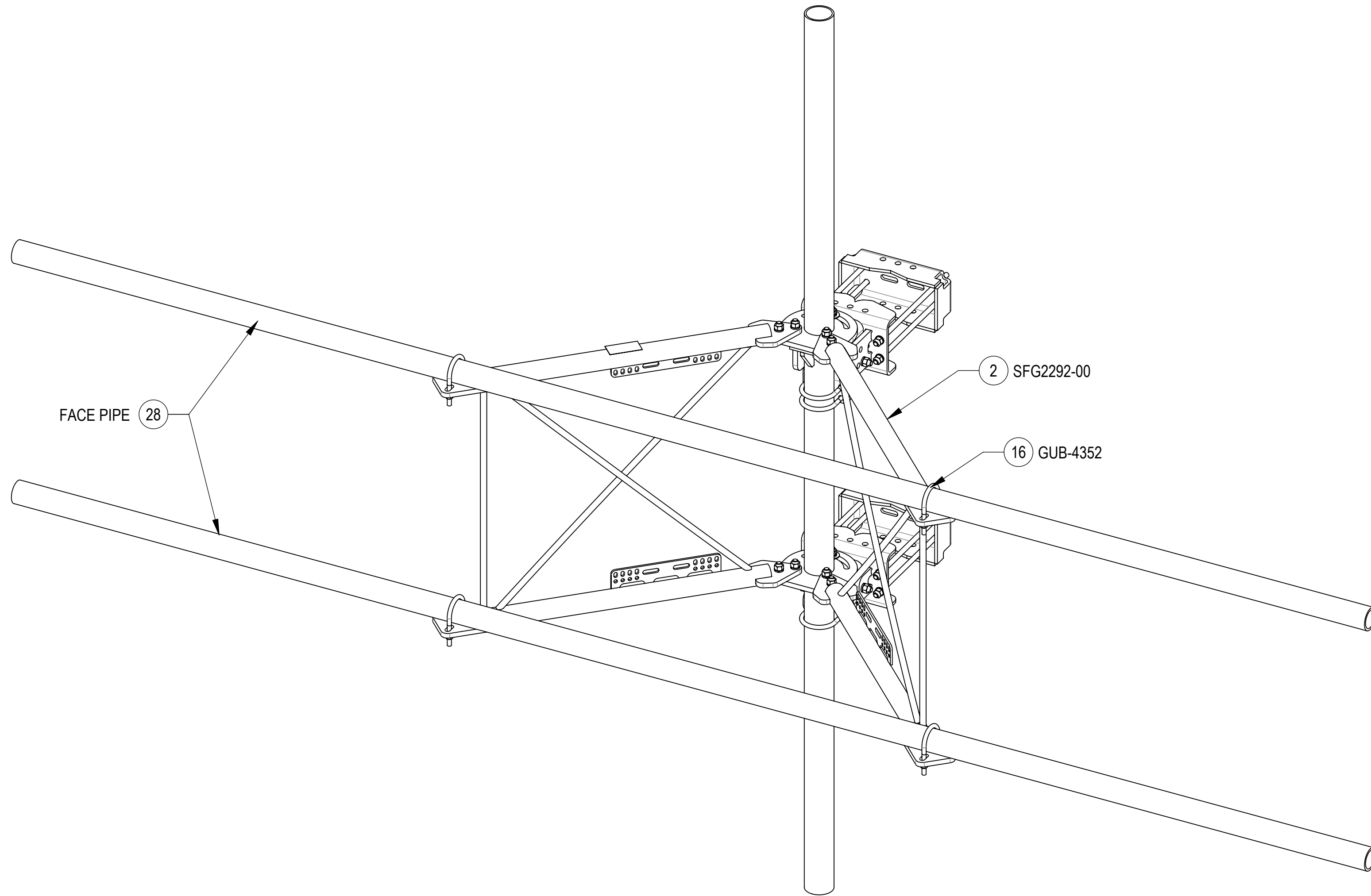
4

3

2

1

**STEP 4: ATTACH FACE PIPES TO STANDOFF ARMS (SFG2292-00) USING U-BOLTS (GUB-4352)**


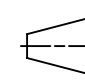


**ISO VIEW**

**ANDREW** an Amphenol company

TITLE  
SFG22RHDX SECTOR FRAME SERIES

SIZE <b>C</b>	SCALE <b>1:8</b>	DOCUMENT NO. SFG22RHDX
------------------	---------------------	---------------------------

 	DRAWING			SHEET 10 OF 12
	VERSION 01	STATUS RE	REVISION B	

Confidential

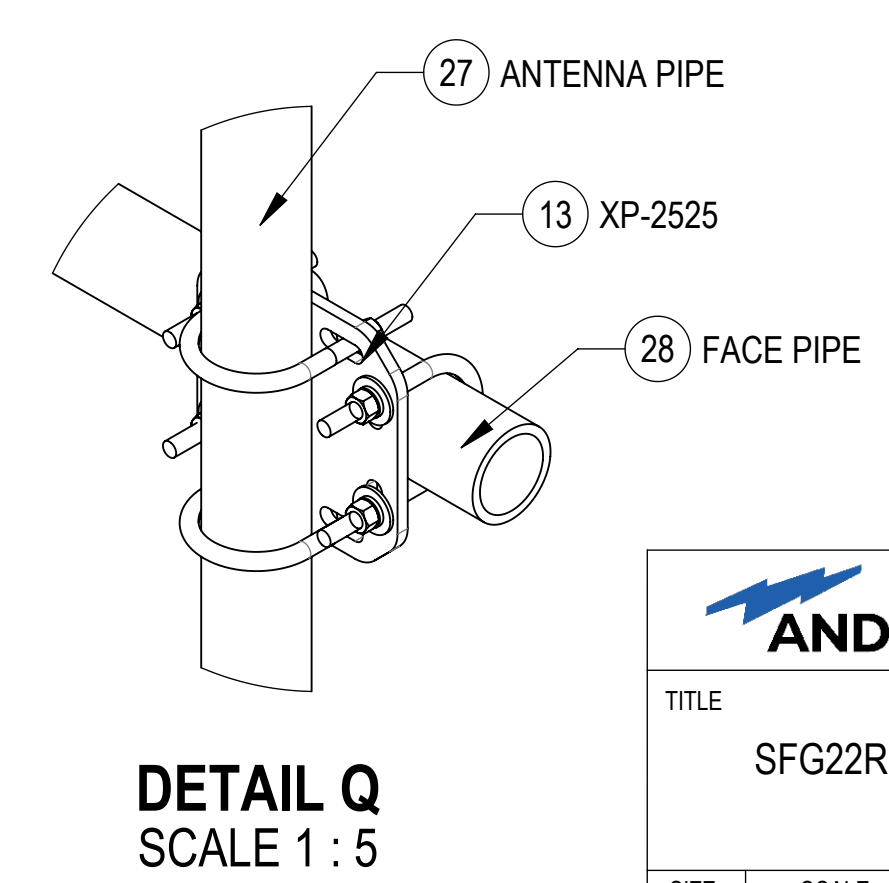
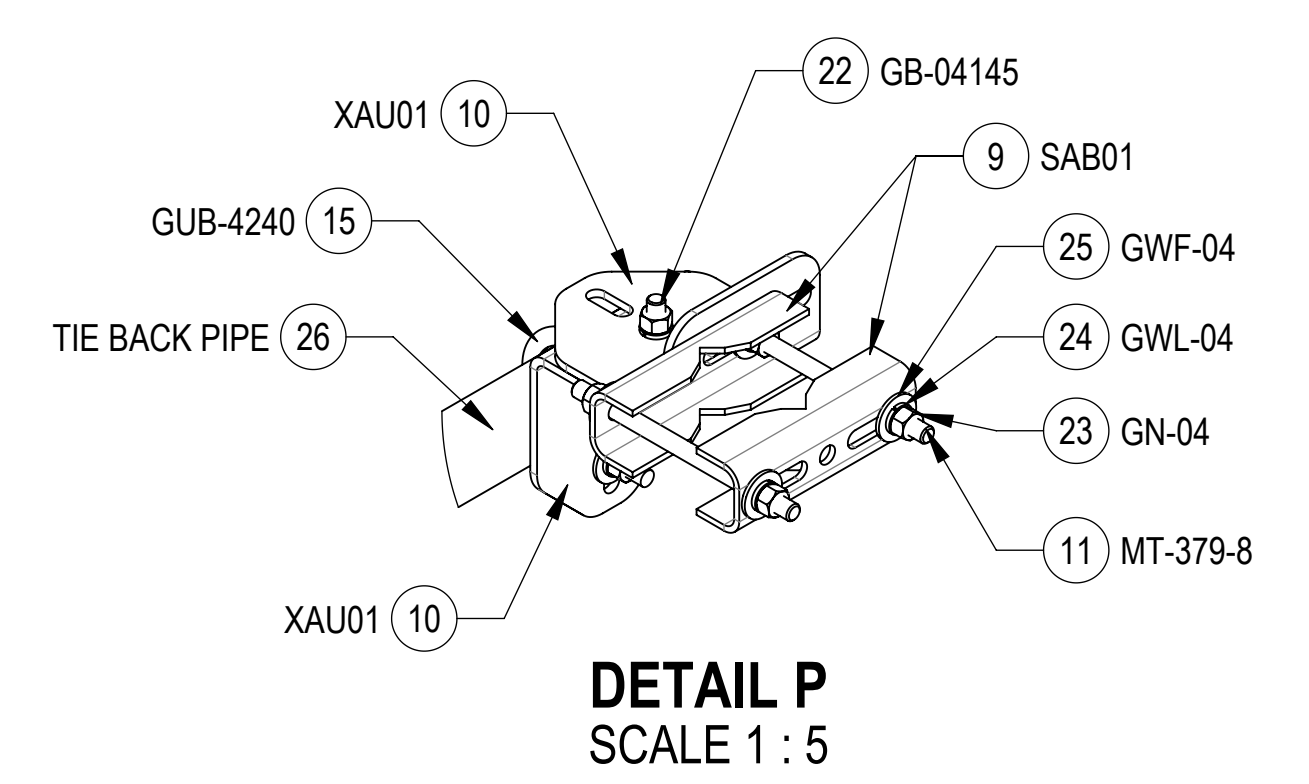
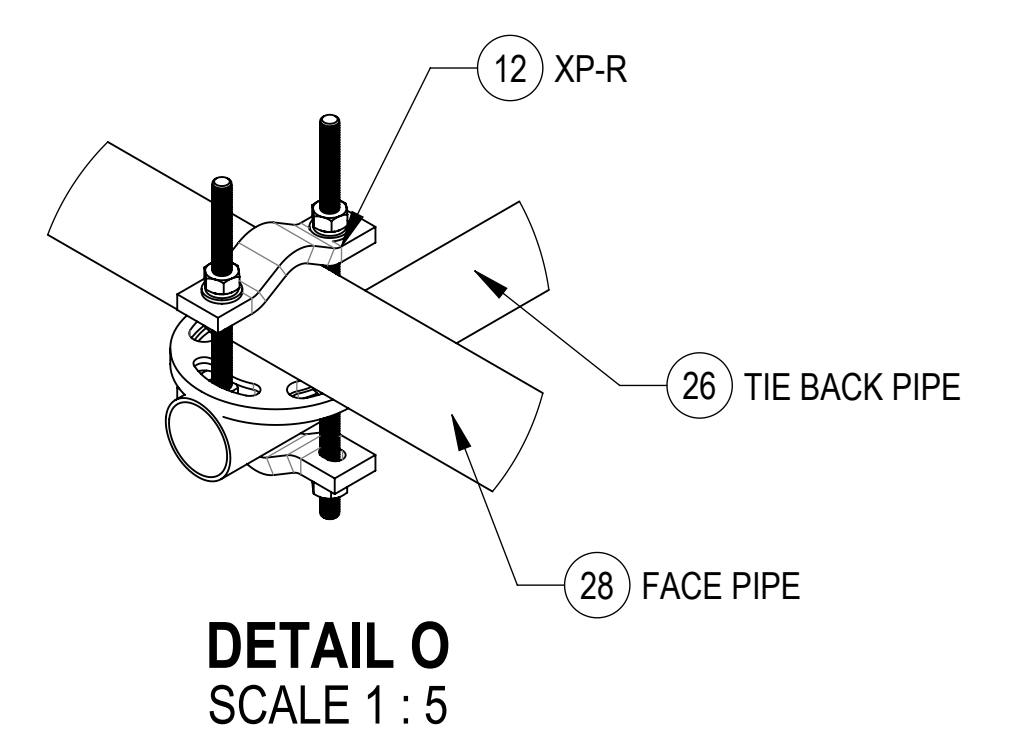
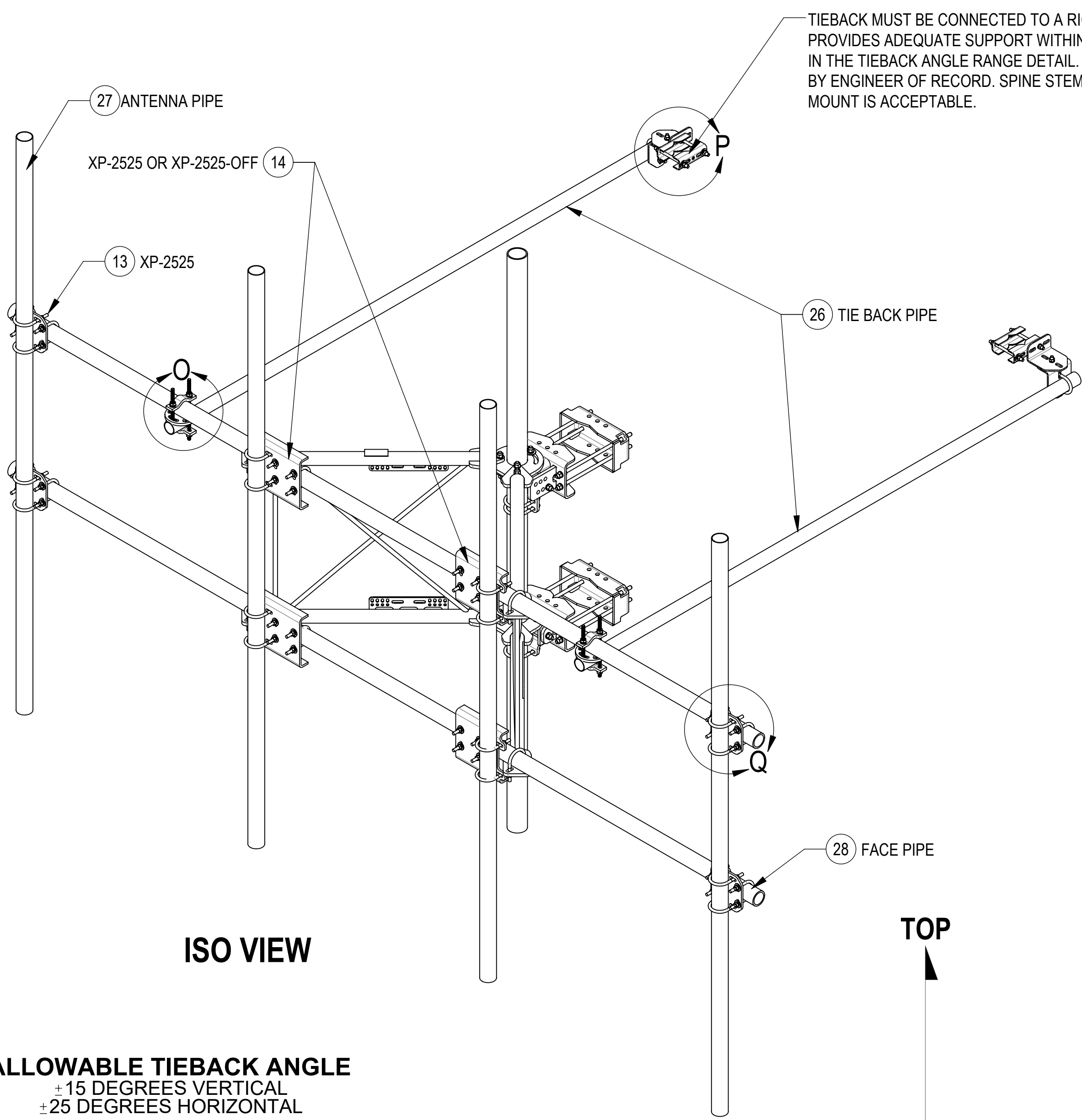
4

3

2

1

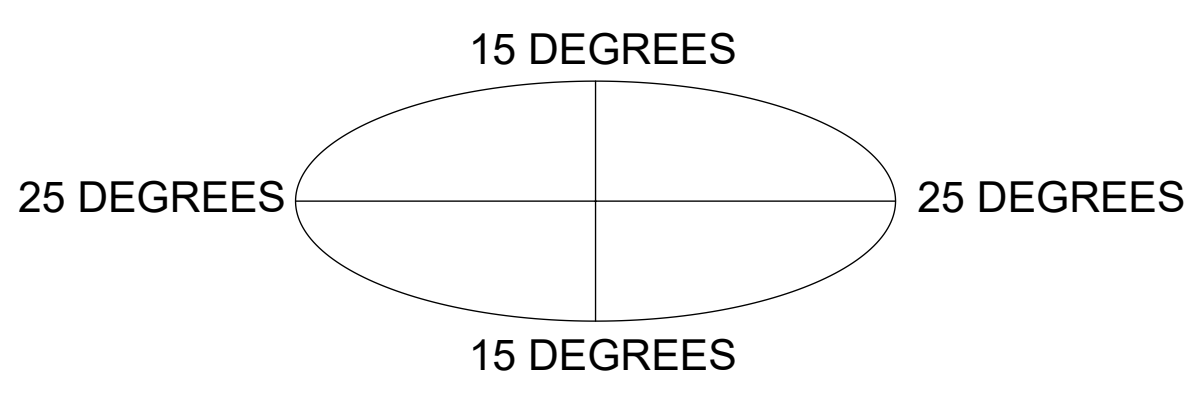
**STEP 5: ATTACH ANTENNA PIPES TO FACE PIPES USING CROSSOVER PLATE KITS(XP-2525 OR XP-2525-OFF).  
ATTACH TIE BACK PIPES TO FACE PIPES USING ROUND CROSSOVER PLATE KITS (XP-R).**



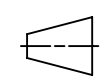


**ISO VIEW**

**TOP**  
↓  
**BOTTOM**

**ALLOWABLE TIEBACK ANGLE**  
±15 DEGREES VERTICAL  
±25 DEGREES HORIZONTAL



 <b>ANDREW</b> an Amphenol company				
TITLE SFG22RHDX SECTOR FRAME SERIES				
SIZE <b>C</b>	SCALE <b>1:12</b>	DOCUMENT NO. SFG22RHDX		
 		DRAWING		SHEET
		VERSION 01	STATUS RE	REVISION B

Confidential

4

3

2

1

4

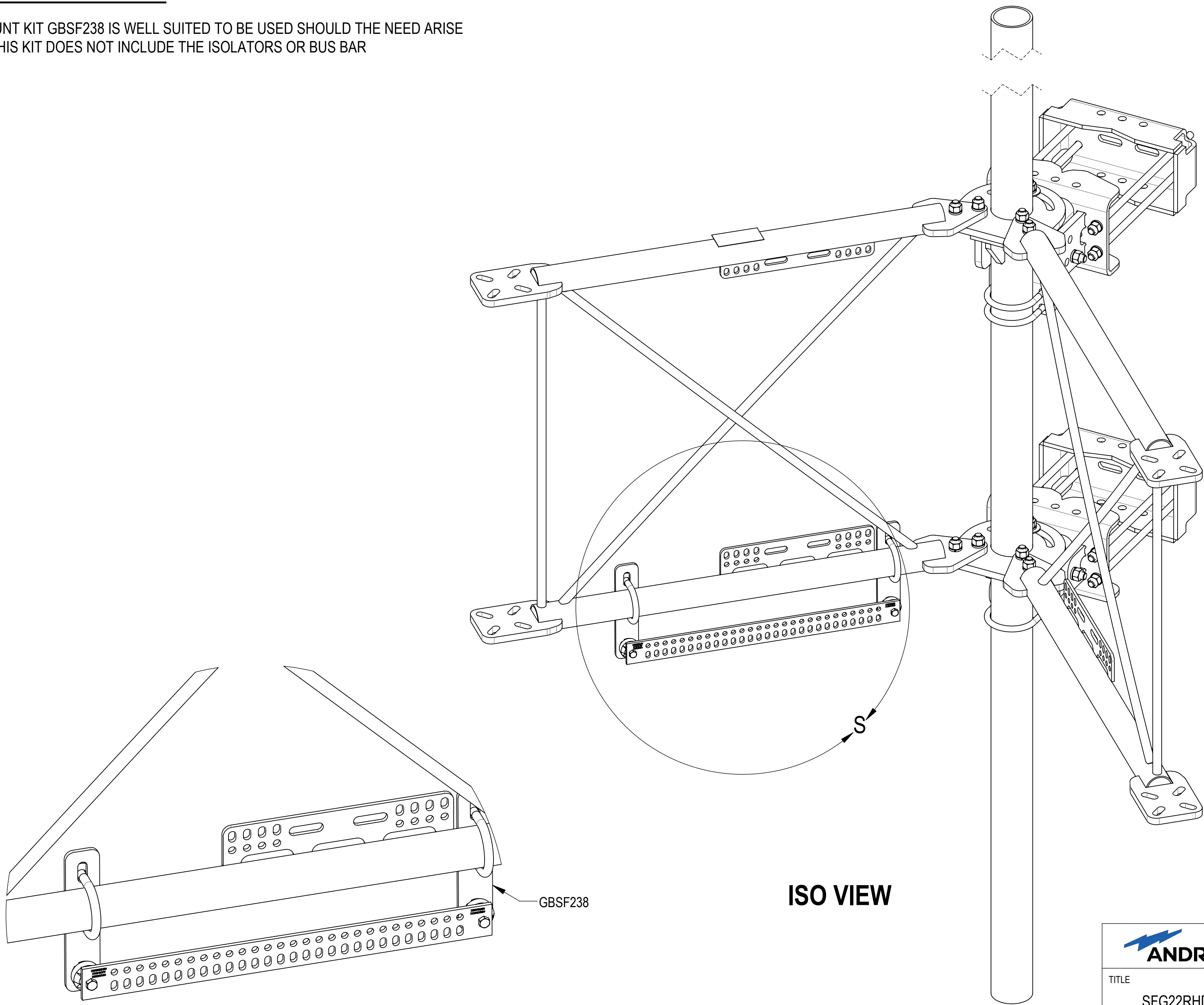
3

2

1

**OPTIONAL ACCESSORIES:**

BUS BAR MOUNT KIT GBSF238 IS WELL SUITED TO BE USED SHOULD THE NEED ARISE  
NOTE THAT THIS KIT DOES NOT INCLUDE THE ISOLATORS OR BUS BAR



**ISO VIEW**

**DETAIL S**  
SCALE 1 : 4

GBSF238



TITLE  
SFG22RHDX SECTOR FRAME SERIES

SIZE <b>C</b>	SCALE <b>1:6</b>	DOCUMENT NO. SFG22RHDX
------------------	---------------------	---------------------------

	DRAWING			SHEET 12 OF 12
	VERSION 01	STATUS RE	REVISION B	

Confidential

4

3

2

1