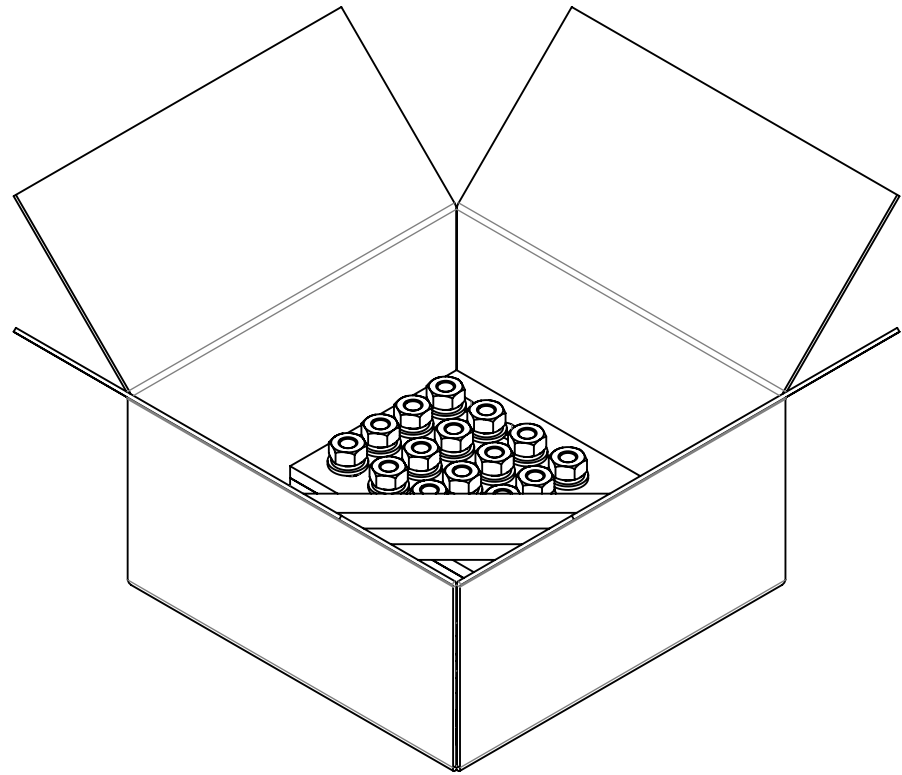
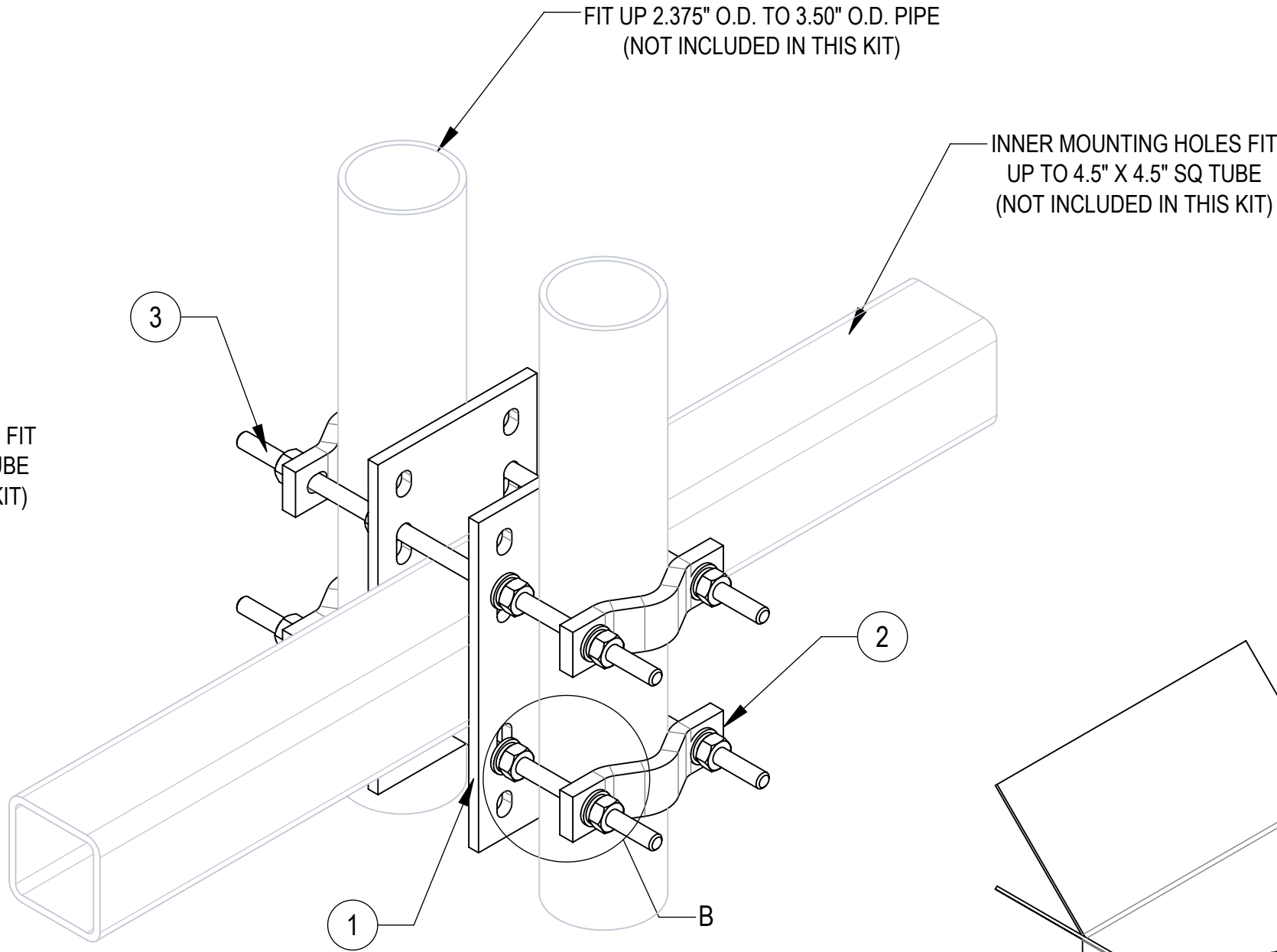
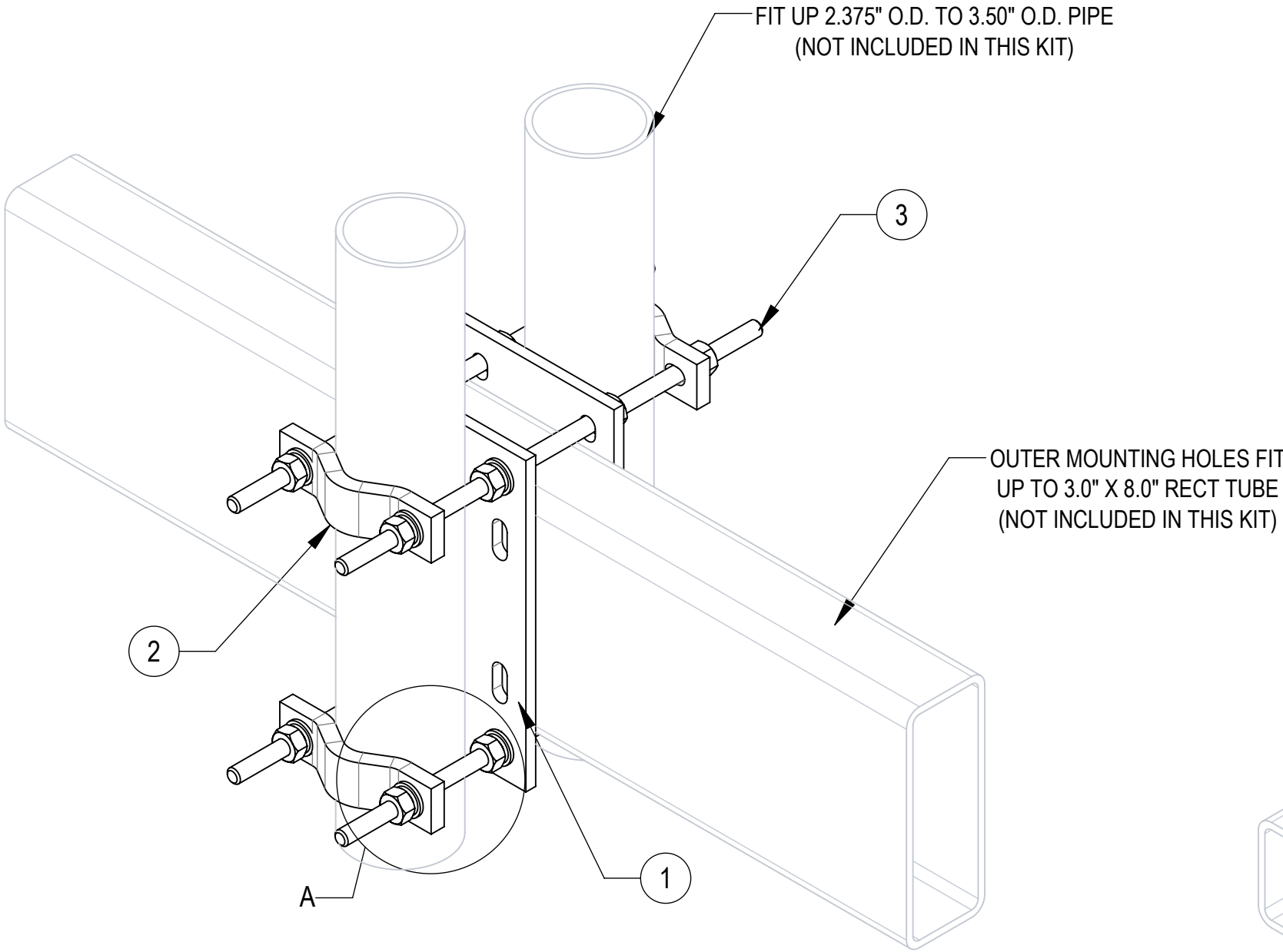


- 1.0 GENERAL NOTES
- 1.1 ALL METRIC DIMENSIONS ARE IN BRACKETS [X. X]
- 1.2 FOR PATENT INFO: <https://www.cs-pat.com>
- 2.0 DESIGN NOTES
- 3.0 MANUFACTURING/SPECIAL REQUIREMENTS
- 3.1 TIGHTEN ALL BOLTS SECURING FLAT PLATES BY THE TURN-OF-NUT METHOD. TIGHTEN ALL U-BOLTS USING TURN-OF-NUT METHOD WITH ATTENTION TO LEAVE EQUAL DISTANCE AND EQUAL FORCE ON EACH LEG OF THE U-BOLT.
- 4.0 TEST
- 5.0 PACKAGING
- 5.1 PACKAGING SHALL MEET COMMSCOPE REQUIREMENTS PER DOCUMENT IS-PL-3005
- 5.2 PRINTED DOCUMENT TO BE PLACED INSIDE POLYBAG AND THEN IN SHIPPING CONTAINER
- 5.3 EXTRA HARDWARE MAY BE SUPPLIED, BAGGED AND SHIPPED

REVISIONS			
REV.	DESCRIPTION	DATE	APPROVED
A	INITIAL RELEASE	MAC 15NOV21	MM1298 40139383CMO
B	CHANGED THE BOM LIST	MAC 16DEC21	MM1298 40139383CMO
C	USE MT37916 INSTEAD OF MT-379-16	MAC 25JAN22	MM1298 40139383CMO
D	GWLF-04A (ITEM 4), GWL-04 (ITEM 5) & GN-04 (ITEM 6) QTY 16 WAS 8	NSUN 19NOV24	BA1025 40209129CMO




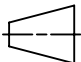
PACKAGING

COMPONENT PART NUMBERS PROVIDED FOR ASSEMBLY PURPOSES;
INDIVIDUAL COMPONENTS MAY BE SHIPPED AS PARTS WITHIN AN INCLUDED KIT.

ITEM	PART NO.	DESCRIPTION	QTY.	WEIGHT	NOTE NO.
1	XP-PM-1000	BACKING PLATE	2	6.73 LBS	
2	SCP10	CLAMP HALF: 1/2", 9/16" HOLE,4-1/8" (EA)	4	1.20 LBS	
3	MT37916	1/2" X 16" GALV THREADED ROD	4	0.88 LBS	
4	GWLF04A	1/2" GALV FLAT WASHER (A325)	16	0.02 LBS	
5	GWL-04	1/2" GALV LOCK WASHER	16	0.01 LBS	
6	GN-04A	1/2" GALV HEX NUT (A194 2H)	16	0.07 LBS	

DENSITY	MASS	96.50	lbs/in³
VOLUME	341.26	lbs	
SURFACE AREA	2854.89	in³	
HEIGHT	6.13"		
LENGTH	16"		
WIDTH	11"		

© 2024 CommScope, Inc. Confidential

COMMSCOPE, INC. OF NORTH CAROLINA									
TOLERANCES						SAP MATERIAL MASTER			
1 PLACE .X[X] ± 0.25[6.3]			3 PLACE .XXX[X] ± 0.060[1.5]			XP-PM-D			
2 PLACE .XX[X] ± 0.12[3.0]			ANGLES ± 2°						
FINISH						MATERIAL			
UNLESS OTHERWISE SPECIFIED DIMENSIONS ARE IN INCHES INTERPRET PER ANSI Y 14.5M-1994		NAME	DATE	TITLE CO TUBE-TO-SQ-RND CLAMPS DUAL-LARGE					
	CE	MAC	15NOV21						
	RW	NSUN	11/20/2024						
	AD	BCROSS	11/21/2024	SCALE 1:4	DOCUMENT NO. XP-PM-D				
	RE	YMENG	12/04/2024						
	ECN 40209129CMO								
SIZE	Auth Group	INSL	MODEL			DRAWING			SHEET 1 OF 1
C			VERSION 03	STATUS RE	REVISION B	VERSION 03	STATUS RE	REVISION D	